



# Falling Timber Farm

*11th Annual Bull & Female Sale*

**SATURDAY, MARCH 21st, 2020**

**LIVE AUCTION - 5:30 pm - AT THE FARM**

*Striving to  
produce consistent,  
quality cattle for  
future generations.*



## **SELLING 40 BULLS AND 40 FEMALES**

Top Cut Yearling Hereford Bulls with Genomic Enhanced EPD's

18 Month Old Hereford Bulls    Yearling Hereford Heifers

18 Month Old Angus Bulls    Fall Bred Hereford & Baldy Heifers

Bred Cows & Cow Calf Pairs    Fall Bred Cows w/ Heifers Calves

**[www.fallingtimmerfarm.com](http://www.fallingtimmerfarm.com)**

## *Falling Timber Farm*

Glenn and Yvonne Ridder, John, Heidi, Madi and Ben Ridder  
www.fallingtimberfarm.com

*Dear fellow cattle producers,*

Welcome to our 11th Annual Bull and Female Sale. Our Hereford cattle represent over 40 years of genetic selection and over 10 generations of selective breeding on average. The founding principles of modest birthweights, female quality, temperament, growth and carcass quality are what FTF strives to produce. Only the best of our cattle are listed and the quality is consistent.

We are offering the highest cut of Hereford yearling bulls as well as 18-24 month old Hereford and Angus bulls that are ready for service. All bulls are hand fed for optimum gain, not maximum gain. By doing this we have realized many benefits over time, including better feet and less fat thickness. This improves the bulls ability to cover cows without heating up in the spring and gives them the opportunity to grow on green grass during their first breeding season.

These bulls are an excellent choice for the commercial cattlemen. They will make baldy females with easy calving, performance, teat and udder quality, and have slick hair coats suited for fescue. This set of bulls has the potential to make a big impact on the breed for future generations of cattle. This year we have had a group of bulls sort themselves to the top of the breed on EPD sort on the AHA database. Three of those bulls are unmatched from an EPD sort and they have the phenotype to go with it!

The females on the sale are consistent FTF quality. The 5 year old cow calf pairs with heifer calves are sired by Huth FTF Torque C002 and FTF Prime Product 513C. The fall bred heifer and open spring heifers are consistent and include the influence of FTF Relevant 831F, Mandate, and Frontier. We are also selling the mother of the Genex bull FTF Powerhouse 7443E.

We are retaining ½ semen interest in several of the bulls as well as ½ embryo interest in some of the females. We will only will collect bulls and flush females if that is also the desire of buyer and they wish to do so for their benefit as well. We have seen so much genetic progress being made with genetic testing and research and we are devoted to improving and building on these for the future.

When you purchase a bull on our sale, the price you pay includes feed and yardage until April 18th. Basically, you are buying a bull that is ready for spring service and spring grass.

We are extremely grateful for your business. As always, we are here to assist you in any way possible to help you achieve your goals. We look forward to seeing you on March 21st.

Sincerely,

*John*



### **2019 Missouri Hereford Association Hall of Fame Recipient**

L to R front row: Madi Ridder, Marty Lueck presenting award, Yvonne & Glenn Ridder, Alli Abadir, Sylvia Mott holding Evelyn Mott, Becky Mott.  
Back row: Heidi, John, & Ben Ridder, Aaron, Andy, & Jason Mott.



# Falling Timber Farm

Saturday March 21st, 2020 • 16789 Ridder Rd, Marthasville, MO 63357

## DIRECTIONS

**From Warrenton:** Take Hwy 47 south 13.9 miles from the Main Street stoplight. Turn right on Ridder Rd. Watch for Falling Timber Farm sign.  
**From Washington:** Take Hwy 47 north 8.9 miles from the 5th Street stoplight. Turn left on Ridder Rd. Watch for Falling Timber Farm sign.

## ACCOMMODATIONS

**Marthasville:** Boone Monument B&B 636-236-3929  
**Warrenton:** Holiday Inn Express 636-456-2220  
Baymont Inn & Suites 636-456-6000  
**Washington:** Super 8 636-390-0088  
Best Western Plus 636-390-8877  
Old Dutch Hotel 636-390-4400

## SCHEDULE

Cattle available for viewing starting at 2pm.  
Live auction begins at 5:30pm.  
Food served before the sale.

## RETAINING SEMEN & EMBRYO INTEREST

We are retaining ½ semen interest in several of the bulls as well as ½ embryo interest in some of the females. Collection or flushes are not required, but can occur if we both choose to do so with expenses and revenue split 50/50.

## BULL PICK UP OR DELIVERY

We offer free bull delivery within 100 miles for this sale.  
Further away? We will work with you.  
Of course, you may pick up your own bull(s).  
We will care for your bulls until April 18th with no extra charge.

## GUARANTEE

Bulls have passed semen test on 3/4/20 by Dr. Spencer Thompson.  
Bulls are performance tested and ultrasounded.  
Hereford bulls are DNA tested free of genetic defects.  
We offer the standard American Hereford Association breeding guarantee.

## Hereford Breed Average EPD's for 2018 Born Calves

	CED	BW	WW	YW	SC	SCF	MILK	M&G	CEM	FAT	REA	Marb	BMI\$	BII\$	CHB\$
EPD	2.3	3.0	51	83	0.2	14.9	23	49	1.8	0.010	0.36	0.09	324	390	100

## ACKNOWLEDGEMENTS:

Dr. Hunt Tainter, DVM  
Dr. Spencer Thompson, DVM  
Russell Coon, Ultrasound Technician  
Joe Rickabough, American Hereford Assn.  
Matt Reynolds, Executive Sec. MO Hereford Assn.  
Amy Phillips, President MO Hereford Assn.  
Travis McConnaughy, Vice-Pres. MO Hereford Assn.  
Jesse Bolin, Auctioneer  
Don Birk, Photography

## SALE REPRESENTATIVES:

Steve Swanson.....573-694-2697  
Wes Tiemann.....816-244-4462  
Don Birk.....417-860-8595  
Jim Reed.....660-527-3507  
Kody Graves.....940-531-1851  
BEEF-360.....660-734-0510 Keenan  
214-726-2759 Jerry  
Streamline Genetics..765-490-6286 Alex  
Jeremy Cobb.....573-808-2126  
Bryan Wyss.....573-291-8152

## SALE DAY PHONES:

John Ridder.....636-358-4161  
Glenn Ridder.....636-284-0602  
Heidi Ridder.....636-358-4020  
Office.....636-433-4701

## COOPERATOR HERDS:

John Fischer Family Farm, Washington, MO  
Pine Ridge Farm, Marthasville, MO  
Jeremy Hector Farm, Marthasville, MO  
Venison Valley Cattle Ranch, Hermann, MO

**DVAuction**  
Broadcasting Real-Time Auctions  
Visit [www.DVAuction.com](http://www.DVAuction.com)  
and Register Today!

For General Questions Please Contact Our Office:  
(402) 316-5460 or [support@dvauction.com](mailto:support@dvauction.com)





CE	BW	WW	YW	SC	SCF	Milk	M&G	MCE	FAT	REA	MARB
11.7	-0.3	64	96	1.4	18.9	28	60	7.8	0.053	0.77	0.13

Trailblazer is extremely well balanced and muscular bull with bred in udder quality and longevity. His 12 year old dam had her 11th calf in January and still looks fantastic. She has a great udder and has put many bulls through this sale. She is the mother of our donor cow, FTF Fabulous 181Y, who we own with Steinbeck Farms, Hermann, MO. His unusual combinations of traits make him very unique. We believe this bull will be a big player in the future of our herd. Retaining ½ semen interest. Homozygous polled. Top 2% REA, 3% CEM, 4% \$CHB, CE, 5% BW, SC, 10% \$BMI, M&G, WW, 20% YW, 25% Milk  
**SHOW ME SELECT QUALIFIED**

**LOT 1**

**FTF TRAILBLAZER 980G** {DLF, HYF, IEF, MSUDF}  
P44001692 02/09/2019

TH 403A 475Z PIONEER 358C ET	TH 89T 755T STOCKMAN 475Z
TH FRONTIER 174E	TH 71U 17Y RITA 403A
FTF TRUSTING LADY 312A	NJW 73S M326 TRUST 100W ET
	FTF BOOM AND BLOOM 8211U

DR WORLD CLASS 517 10H	FELTONS 517
FTF CLASSY LADY 856U	VPI MARATHON LADY 0081
FTF VELVET 425P	MMPH PARADIGM VELOCITY 45L
	FTF MISS RIGHT 949J

AHA GE-EPD											
Act BW	Adj WW		Adj YW		Adj IMF		Adj REA		Adj FAT		
74	674		1020		3.66		13.95		0.25		
CED	BW	WW	YW	SC	SCF	Milk	M&G	MCE	FAT	REA	Marb
11.7	-0.3	64	96	1.4	18.9	28	60	7.8	.053	0.77	0.13



**FTF FABULOUS 181Y**  
**Maternal Sister to Lot 1**



**FTF CLASSY LADY 856U**  
**Dam of Lot 1**



**FTF PRIME PRODUCT 532C**  
**Maternal Brother to Lot 1**





CE	BW	WW	YW	SC	SCF	Milk	M&G	MCE	FAT	REA	MARB
10.4	0.1	58	90	1.4	16.2	31	60	4.8	0.053	0.34	-0.17

Goldmine is a very powerful, big bodied bull whose dam is a full sister to FTF Porterhouse 455B. Great maternal and performance pedigree with loads of CE, plenty of growth and should be a maternal specialist. The Frontier/Prospector cross seems to work very well. The Porterhouse line has been as consistent as anything we have ever produced in terms of phenotype, performance, and udder quality. He has a maternal brother working in the herd of VanVleck Herefords, Winlock, WA. His 7/8 brother recently was the high selling bull at Topp Herefords sale at \$115,000. Retaining 1/2 semen interest. Homozygous Polled. Top 4% SC, 5% CED, 10% BW, M&G, Milk, 20% CEM, WW. SHOW ME SELECT QUALIFIED



**FTF GOLDMINE 929G** {DLF, HYF, IEF, MSUDF}  
P44001616 01/16/2019

TH 403A 475Z PIONEER 358C ET TH 89T 755T STOCKMAN 475Z  
TH FRONTIER 174E TH 71U 17Y RITA 403A  
FTF TRUSTING LADY 312A NJW 73S M326 TRUST 100W ET  
FTF BOOM AND BLOOM 8211U

FTF PROSPECTOR 145Y  
FTF MS PROSPECTOR 526C  
FTF VERONICA 227Z

HUTH PROSPECTOR K085  
FTF CHICK A BOOM 7227T  
TH 122 71I VICTOR 719T  
FTF FABULOUS 097X



Act BW		Adj VVW		Adj YW		Adj IMF		Adj REA		Adj FAT	
75		686		1019		3.4		12.04		0.32	
CED	BW	WW	YW	SC	SCF	Milk	M&G	MCE	FAT	REA	Marb
10.4	0.1	58	90	1.4	16.2	31	60	4.8	.053	0.34	-0.17



**FTF VERONICA 227Y**  
Granddam to Lot 2



**FTF PORTERHOUSE 455B**  
Full Brother to Dam of Lot 2



**FTF MS PROSPECTOR 526C**  
Dam of Lot 2





**FTF**

**LOT 3**

**FTF NEW FRONTIER 951G** (DLF, HYF, IEF, MSUDF)  
P44001665 01/20/2019

TH 403A 475Z PIONEER 358C ET TH 89T 755T STOCKMAN 475Z  
TH FRONTIER 174E TH 71U 17Y RITA 403A  
FTF TRUSTING LADY 312A NJW 73S M326 TRUST 100W ET  
FTF BOOM AND BLOOM 8211U

FTF COMPLETE 461B KCF BENNETT 9126J S100  
FTF COMPLETE LADY 6228D FTF BOOM AND BLOOM 8218U  
FTF MISS REVOLUTION 172Y MSU TCF REVOLUTION 4R  
FTF CLASSIC MISS 868U



Act BW		Adj WW		Adj YW		Adj IMF		Adj REA		Adj FAT	
78		730		1113		3.14		11.84		0.22	
CED	BW	WW	YW	SC	SCF	Milk	M&G	MCE	FAT	REA	Marb
6.4	1.5	69	121	0.9	16.9	28	62	3.1	.053	0.65	-.08

New Frontier blazes the way in terms of calving ease and growth with excellent phenotype. He is big bodied, growthy, and complete. His dam is a great uddered, easy fleshing complete female that comes from the same family as FTF Net Merit 444B. Retaining ½ semen interest. Homozygous polled. Top 1% YW, 2% WW, 5% REA, 10% M&G, 20% BW, CED, 25% Milk  
SHOW ME SELECT QUALIFIED



**FTF**

**LOT 4**

**FTF FRONTIER 940G** (DLF, HYF, IEF, MSUDF)  
P44001633 01/18/2019

TH 403A 475Z PIONEER 358C ET TH 89T 755T STOCKMAN 475Z  
TH FRONTIER 174E TH 71U 17Y RITA 403A  
FTF TRUSTING LADY 312A NJW 73S M326 TRUST 100W ET  
FTF BOOM AND BLOOM 8211U

FTF VALUE ADDED 369A TH 122 71I VICTOR 719T  
FTF VALENTINE 572C FTF FABULOUS 181Y  
FTF M326 CHICK 124Y KCF BENNETT 3008 M326  
FTF CHICK A BOOM 874U



Act BW		Adj WW		Adj YW		Adj IMF		Adj REA		Adj FAT	
82		617		996		3.42		10.66		0.25	
CED	BW	WW	YW	SC	SCF	Milk	M&G	MCE	FAT	REA	Marb
11.3	0.0	59	98	1.3	17.6	24	54	3.8	.033	0.35	-.02

Here is a pigmented stout made and well balanced Frontier son with excellent EPD's. His 5 year old dam is about as good as you can make them. She sells with her spring heifer calf as Lot 43. Retaining ½ semen interest. Heterozygous polled. Top 4% CED, SC, 10% BW, 15% YW, 20% WW.  
SHOW ME SELECT QUALIFIED



**FTF**

**LOT 5**

**FTF FRONTIER 943G** (DLF, HYF, IEF, MSUDF)  
P44001653 01/19/2019

TH 403A 475Z PIONEER 358C ET TH 89T 755T STOCKMAN 475Z  
TH FRONTIER 174E TH 71U 17Y RITA 403A  
FTF TRUSTING LADY 312A NJW 73S M326 TRUST 100W ET  
FTF BOOM AND BLOOM 8211U

KJ C&L J119 LOGIC 023R ET DRF JWR PRINCE VICTOR 71I  
FTF MS LOGIC 6405D SHF INTERSTATE D03 J119  
FTF MS REVOLUTION 4201B MSU TCF REVOLUTION 4R  
FTF LEANNA 480P



Act BW		Adj VVW		Adj YW		Adj IMF		Adj REA		Adj FAT	
74		620		931		3.63		10.14		0.24	
CED	BW	WW	YW	SC	SCF	Milk	M&G	MCE	FAT	REA	Marb
15.8	-1.6	57	95	1.3	18.7	22	51	7.4	.073	0.40	0.08

This Frontier son has big time EPD's spread with awesome calving ease and growth EPD's. His 2 year old Logic dam has a picture perfect udder. Lot 5 is linebred to FTF Leanna 480P who is the maternal great great grandmother of Frontier. Homozygous polled. Top 1% CED, 2% BW, 4% CEM, SC, 20% YW, 25% WW  
SHOW ME SELECT QUALIFIED





CE	BW	WW	YW	SC	SCF	Milk	M&G	MCE	FAT	REA	MARB
4.3	3.7	82	118	1.6	22.2	20	61	1.0	0.103	0.48	0.05

Torque has matured into an awesome looking bull with sons and daughters expressing his tremendous performance. His first daughters are calved in and have the very nice udders we were hoping for. He has very good calving ease with a little more birthweight and is ideal for use in a mature cow herd. Torque did very well in the Olsen Ranch Test with good growth, heaviest carcass weight of all the bulls tested, and 100% graded choice or better. He is an outcross tool for this herd that does a lot of things right.

Owned with Huth Polled Herefords, Oakfield, WI.


**LOT 6**
**FTF TORQUE 969G** {DLF, HYF, IEF, MSUDF}

P44001681 01/29/2019

SHF YORK 19H Y02  
HUTH FTF TORQUE C002  
HUTH T013 DOMINETTE Z016

MSU MF HUDSON 19H  
LOEWEN MISS P20 10W  
UPS DOMINO 3027  
HUTH R007 VERA T013

NJW 73S W18 HOMETOWN 10Y ET  
FTF HOMETOWN HONEY 4225B  
FTF ROSE RANGER 018X

SHF WONDER M326 W18 ET  
NJW P606 72N DAYDREAM 73S  
RF TIME IS RIGHT 53S  
FTF LADY RANGER 7101T


Act BW		Adj WW		Adj YW		Adj IMF		Adj REA		Adj FAT	
82		744		1172		3.11		12.60		0.29	
CED	BW	WW	YW	SC	SCF	Milk	M&G	MCE	FAT	REA	Marb
6	5.1	79	122	1.8	20.5	27	67	1.0	.073	0.54	0.05

969 is a big, stout, goggle eyed, dark red Torque son whose maternal brother was a highlight in the 2019 sale and sold to Wild Horse Hill Ranch, Boynton, OK. Lot 6 has excellent eye appeal with big time growth and a great calving ease EPD. His maternal grandmother is the dam of our all time high marbling bull, FTF Quality Beef 330C. Quality Beef sired the Champion Hereford steer in the NJHA Fed Steer Shootout program for Ben Ridder. Homozygous polled. His mother is a Dam of Distinction.

Top 1% \$CHB, M&G, SC, WW, 3% \$BMI, 15% REA, 20% CED, Milk

SHOW ME SELECT QUALIFIED


*Predictable Performance Genetics*


**LOT 7**
**FTF TORQUE 937G** {DLF, HYF, IEF, MSUDF}  
P44001624 (TWIN) 01/17/2019

SHF YORK 19H Y02  
HUTH FTF TORQUE C002  
HUTH T013 DOMINETTE Z016

MSU MF HUDSON 19H  
LOEWEN MISS P20 10W  
UPS DOMINO 3027  
HUTH R007 VERA T013

MSU TCF REVOLUTION 4R  
FTF MS REVOLUTION 4320B  
FTF CLASSIC BEAUTY 907W

FELTONS LEGEND 242  
MSU TCF RACHAEL ET 54N  
FTF CLASS ACT 736T  
FTF LEANNA 636S


Act BW		Adj WW		Adj YW		Adj IMF		Adj REA		Adj FAT	
65		609		949		2.85		10.60		0.27	
CED	BW	WW	YW	SC	SCF	Milk	M&G	MCE	FAT	REA	Marb
5.6	2.1	69	106	1.0	22.5	19	54	3.0	.013	0.45	-.01

Fantastic female maker here. Dam and granddam are dark red pigmented females with great udders. Granddam is still in production at 11 years of age. Lot 7 is a twin with a heifer. Retaining ½ semen interest. Homozygous polled. Top 2% \$BMI, \$CHB, WW, 4% YW, 25% CED


**LOT 8**
**FTF TORQUE 904G** {DLF, HYF, IEF, MSUDF}  
P44001563 01/09/2019

SHF YORK 19H Y02  
HUTH FTF TORQUE C002  
HUTH T013 DOMINETTE Z016

MSU MF HUDSON 19H  
LOEWEN MISS P20 10W  
UPS DOMINO 3027  
HUTH R007 VERA T013

FTF PRIME PRODUCT 226Z  
FTF PRIMETIME MS 710E  
FTF MS REVOLUTION 457B

SHF RIBEYE M326 R117  
FTF CLASSIC MISS 0206X  
MSU TCF REVOLUTION 4R  
FTF CLASSY LADY 171Y


Act BW		Adj WW		Adj YW		Adj IMF		Adj REA		Adj FAT	
76		708		1034		4.00		10.94		0.14	
CED	BW	WW	YW	SC	SCF	Milk	M&G	MCE	FAT	REA	Marb
6.2	2.8	77	109	1.8	22.9	27	66	4.9	.023	0.58	0.13

The Torque/Prime Product mating has worked out well here with those two complimenting each other quite well. Lot 8 is dark red and pigmented with a 111 IMF ratio. Homozygous polled. Top 1% \$BMI, \$CHB, M&G, SC, WW, 3% YW, 10% REA, 20% CED, CEM, Milk SHOW ME SELECT QUALIFIED

**LOT 9**
**FTF TORQUE 966G** {DLF, HYF, IEF, MSUDF}  
P44001678 01/28/2019

SHF YORK 19H Y02  
HUTH FTF TORQUE C002  
HUTH T013 DOMINETTE Z016

MSU MF HUDSON 19H  
LOEWEN MISS P20 10W  
UPS DOMINO 3027  
HUTH R007 VERA T013

FTF REVOLUTION 126Y  
FTF SWEET REVOLUTION 476B  
FTF SONNET 012X

MSU TCF REVOLUTION 4R  
FTF BON BON 526R  
GRANDVIEW 70AKS SONORA 145R  
FTF LEANNA 454P


Act BW		Adj WW		Adj YW		Adj IMF		Adj REA		Adj FAT	
76		618		992		3.65		12.29		0.31	
CED	BW	WW	YW	SC	SCF	Milk	M&G	MCE	FAT	REA	Marb
8.0	2.3	56	82	1.1	20.7	22	50	6.0	.133	0.34	0.12

This bull is a very attractive calving ease bull that will add pigment and udder quality to any herd. Homozygous polled. Top 10% \$BMI, CEM, 15% CED SHOW ME SELECT QUALIFIED

**LOT 10**
**FTF TORQUE 8301F** {DLF, HYF, IEF, MSUDF}  
P43975509 08/19/2018

SHF YORK 19H Y02  
HUTH FTF TORQUE C002  
HUTH T013 DOMINETTE Z016

MSU MF HUDSON 19H  
LOEWEN MISS P20 10W  
UPS DOMINO 3027  
HUTH R007 VERA T013

FTF PRINCE LEE 925W  
FTF PRICELESS 4432B  
FTF CLASSY LADY 0352X

DRF JWR PRINCE VICTOR 711  
FTF CHICK A BOOM 7227T  
DR WORLD CLASS 517 10H  
FTF CANDACE 020K


Act BW		Adj WW		Adj YW		Adj IMF		Adj REA		Adj FAT	
68		699		983		2.90		11.06		0.22	
CED	BW	WW	YW	SC	SCF	Milk	M&G	MCE	FAT	REA	Marb
4.4	2.5	63	86	1.3	22.2	25	57	4.4	.053	0.33	-.03

A dark red 18 month old Torque son that will add maternal traits to the cowherd. Homozygous polled. Top 5% \$BMI, 10% WW, 15% M&G, 20% SC, 25% CEM





CE BW WW YW SC SCF Milk M&G MCE FAT REA MARB  
7.7 2.3 69 106 1.3 21.6 25 59 3.2 0.083 0.47 0.06

Lot 11 is a high calving ease, high performance bull that is loaded with power. The cow family is very special and consistently brings in good ones year after year. We hope to A.I. to him in the future.

Retaining ½ semen interest.

Homozygous Polled.

Top 2% M&G, 3% SCF, 4% Milk, 5% WW, REA, 10% CEM, SC, 15% BW, 20% CED, 25% YW, Marb.

SHOW-ME SELECT QUALIFIED.



**FTF VERONICA 414B**  
P43489200 01/13/2014  
**Dam of Lot 11**

**LOT 11**

**FTF FORCE 956G** {DLF, HYF, IEF, MSUDF}  
P44001670 01/22/2019

SHF YORK 19H Y02  
HUTH FTF TORQUE C002  
HUTH T013 DOMINETTE Z016

MSU MF HUDSON 19H  
LOEWEN MISS P20 10W  
UPS DOMINO 3027  
HUTH R007 VERA T013

TH 122 71I VICTOR 719T  
FTF VERONICA 414B  
FTF SONNET 2208Z

DRF JWR PRINCE VICTOR 71I  
KBCR 19D DOMINETTE 122  
GRANDVIEW 7OAKS SONORA 145R  
FTF TRENA 570R



Act BW		Adj WW		Adj YW		Adj IMF		Adj REA		Adj FAT	
82		698		1118		4.29		11.88		0.38	
CED	BW	WW	YW	SC	SCF	Milk	M&G	MCE	FAT	REA	Marb
7.7	2.3	69	106	1.3	21.6	25	59	3.2	.083	0.47	0.06

Force is a high calving ease, high performance bull that is loaded with power. This cow family is very special and consistently brings in good ones year after year. We hope to AI to him in the future. Retaining ½ semen interest. Homozygous polled. Top 2% WW, 4% \$BMI, YW, 10% M&G, SC 15% \$CHB, CED SHOW ME SELECT QUALIFIED







CE BW WW YW SC SCF Milk M&G MCE FAT REA MARB  
5.8 1.2 61 98 1.8 24.6 38 69 5.8 -0.017 0.59 0.38

FTF Prime Product 226Z is the A.I. sire that does so many things well in terms of growth and efficiency. This now deceased bull is unmatched in the Hereford breed and most likely, in the beef industry as a whole. 226Z served as a Reference Sire in the most recent Olsen Ranch Test and blew away the competition on average daily gain and adjusted feed per gain. Owned with Truman Farms, Prescott, IA. Semen is available through BEEF-360.



**Table 1: 2018 born Olsen Feed Efficiency  
Bulls used on Heifers**

Reg	Sire	No. Progeny	Avg. DMI	Rank	ADG	Rank	F:G	Rank	Adj. F:G	Rank
43603037	CHURCHILL KICKSTART 501C ET	12	24.4	1	4.2	3	5.9	1	6.0	1
43594696	HUTH FTF TORQUE C002	7	26.9	3	4.2	2	6.5	4	6.3	3
43268575	OR 3575 HUSKER N151 ET	7	27.0	4	4.4	1	6.2	2	6.1	2
43676217	SHF DEADBOLT 001A D163	10	24.6	2	3.9	4	6.4	3	6.5	4

**Bulls used on Cows**

Reg	Sire	No. Progeny	Avg. DMI	Rank	ADG	Rank	F:G	Rank	Adj. F:G	Rank
43616719	/S PEERLESS 55000 ET	14	23.8	12	4.3	2	5.6	4	5.6	4
43720603	/S REVOLUTION 66128	15	22.5	5	3.9	12	5.8	11	6.1	12
43724674	BR BELLE AIR 6011	12	22.5	3	4.2	3	5.4	2	5.3	2
43268007	CL 1 DOMINO 215Z	18	23.1	8	4.0	8	5.7	10	5.5	3
43683964	EFBEEF B20 X51 D804	24	22.2	2	3.9	11	5.7	8	5.9	11
43289496	FTF PRIME PRODUCT 226Z	7	22.7	6	4.3	1	5.2	1	4.8	1
43694844	KCF BENNETT RELEVANT D67 ET	15	23.3	10	4.1	5	5.7	7	5.7	6
43662452	KCF BENNETT X51 C558	16	22.9	7	4.1	6	5.6	6	5.7	7
43268578	OR 3575 HUSKER N162 ET	7	23.7	11	4.1	7	5.9	12	5.8	9
43624399	SCHU-LAR CONVERSION 501 ET	18	22.5	4	3.9	9	5.7	9	5.8	8
43591689	SCHU-LAR SELECTION 16C	19	21.4	1	3.9	10	5.4	3	5.6	5
43676151	SHF D-DAY 001A D04 ET	11	23.3	9	4.2	4	5.6	5	5.8	10





CE	BW	WW	YW	SC	SCF	Milk	M&G	MCE	FAT	REA	MARB
4.0	2.1	61	103	1.7	19.7	31	62	5.2	-0.007	0.53	0.30

FTF Profitmaker 9224G is dark red, pigmented and heavily muscled bull that is as good or better than his father. His mother is a picture perfect, ideal beef cow. His combination of traits and fantastic feed efficiency EPD makes him the only animal in the breed to match his EPD's on a breed wide sort.

Retaining ½ semen interest. Heterozygous polled.

Top 1% \$CHB, 2% SC, 3% \$BMI, 5% M&G, Milk, 10% YW, 15% CEM, REA, WW, 25% DMI



**LOT 12**

**FTF PROFITMAKER 9224G** {DLF, HYF, IEF, MSUDF}

P44001603 01/11/2018

SHF RIBEYE M326 R117  
FTF PRIME PRODUCT 226Z  
FTF CLASSIC MISS 0206X

KCF BENNETT 3008 M326  
HVH MISS HUDSON 83K 8M  
FTF CLASS ACT 629S  
FTF ENYA 303N

GRANDVIEW 7OAKS SONORA145R REMITALL ONLINE 122L  
FTF SONNET 2208Z  
FTF TRENA 570R

DJB 46B BETH 1L  
4K TRENT G605 L32  
FTF RITA 330N



Act BW		Adj WW		Adj YW		Adj IMF		Adj REA		Adj FAT	
90		631		1002		3.82		11.87		0.16	
CED	BW	WW	YW	SC	SCF	Milk	M&G	MCE	FAT	REA	Marb
4.0	2.1	61	103	1.7	19.7	31	62	5.2	-.007	0.53	0.30

**FTF SONNET 2208Z**

P43289453 12/22/2011

**Dam of Lot 12 & Granddam of Lot 11**



*Predictable Performance Genetics*



## LOT 13 **FTF PRIME PROFIT 9215G** {DLF, HYF, IEF, MSUDF}

P44001593 12/27/2018

FTF PRIME PRODUCT 226Z  
FTF PRIME PRODUCT 513C  
FTF MS CLASSIC 241Z

SHF RIBEYE M326 R117  
FTF CLASSIC MISS 0206X  
MSU TCF REVOLUTION 4R  
FTF CLASSY LADY 915W

RF TIME IS RIGHT 53S  
FTF ROSE RANGER 018X  
FTF LADY RANGER 7101T

CMF 21E LOGAN 544K  
RF 73C ROSE 50P  
MC RANGER 9615  
FTF MISS RIGHT 122L



Act BW		Adj WW		Adj YW		Adj IMF		Adj REA		Adj FAT	
93		666		1061		5.62		13.46		0.32	
CED	BW	WW	YW	SC	SCF	Milk	M&G	MCE	FAT	REA	Marb
3.0	2.7	63	102	1.0	20.3	30	62	3.0	.053	0.60	0.44

### FTF PRIME PRODUCT 513C

P43579444 01/11/2015

**Sire of Lot 13**



Here is a maternal brother to FTF Quality Beef 330A that had the highest ultrasound marbling score of any bull scanned and ratioed 131. Homozygous polled.

1% \$BMI, \$CHB, 2% Marb, 5% M&G, 10% Milk, REA, WW, YW



## LOT 14 **FTF TESTED 902G** {DLF, HYF, IEF, MSUDF}

P44001561 01/07/2019

EFBEEF FOREMOST U208  
EFBEEF TFL U208 TESTED X651 ET  
EFBEEF P606 MABEL R415

FELTONS SOUNDER 957  
EFBEEF G824 KATE S610 ET  
EF SCHU-LAR N106 OF 009K 434V  
EF G824 MABEL N174

FTF PROSPECTOR 145Y  
FTF MS PROSPECTOR 454B  
FTF MS REVOLUTION 2312Z

HUTH PROSPECTOR K085  
FTF CHICK A BOOM 7227T  
MSU TCF REVOLUTION 4R  
FTF FAITH 644S



Act BW		Adj WW		Adj YW		Adj IMF		Adj REA		Adj FAT	
77		687		1070		3.31		12.59		0.12	
CED	BW	WW	YW	SC	SCF	Milk	M&G	MCE	FAT	REA	Marb
6.9	1.7	73	109	1.3	20.3	29	65	3.7	.023	0.54	0.37

A very nicely made and well balanced Tested son who really brings a lot to the table. He ratioed below average for BW while ratioing 107 WW, 106 YW, and 108 REA. His dam has produced two females that sold among the top in the Missouri Opportunity Sale, Sedalia, MO, in the last two years. Homozygous polled.

Top 1% WW, 2% M&G, 3% \$BMI, Marb, YW, 10% SC, 15% \$CHB, Milk, REA, 20% CED, 25% BW

SHOW ME SELECT QUALIFIED



## LOT 15 **FTF TESTED 924G** {DLF, HYF, IEF, MSUDF}

P44001611 01/15/2019

EFBEEF FOREMOST U208  
EFBEEF TFL U208 TESTED X651 ET  
EFBEEF P606 MABEL R415

FELTONS SOUNDER 957  
EFBEEF G824 KATE S610 ET  
EF SCHU-LAR N106 OF 009K 434V  
EF G824 MABEL N174

FTF REVOLUTION 2429Z ET  
FTF ROSALINDA 7226E  
FTF ENYA 928

MSU TCF REVOLUTION 4R  
JR MISS RIGHT 950J  
HUTH ENHANCER 2D  
FTF LINDY 767T



Act BW		Adj WW		Adj YW		Adj IMF		Adj REA		Adj FAT	
78		733		1126		3.85		11.50		0.20	
CED	BW	WW	YW	SC	SCF	Milk	M&G	MCE	FAT	REA	Marb
12.6	1.9	70	110	1.3	20.0	27	62	7.2	.073	0.35	0.36

924G is a dark red pigmented bull from a first calf heifer that performed quite well ratioing 111 WW, 109 YW, and 107 IMF. He is nearly unmatched in the breed while using his EPD's as minimums and sorting on the AHA database.

Homozygous polled.

Top 2%, CED, WW, 3% Marb, YW, 4% CEM, 5% M&G, SC, 10% \$BMI, 25% BW, Milk.

SHOW ME SELECT QUALIFIED





CE	BW	WW	YW	SC	SCF	Milk	M&G	MCE	FAT	REA	MARB
2.2	2.4	65	108	1.8	17.7	36	69	4.6	0.053	0.24	0.17

FTF Porterhouse 455B was one of the highlights of our 2015 sale. He has proven himself in every category including siring high performing, attractive bulls. One of his sons, FTF Powerhouse 7443E, housed at Genex in Shawano, WI, is being collected for export to European and Asian markets. His daughters are exceptional with small, well placed teats, tight udders, and currently have a nursing ratio of 102.1.

Owned with Walker Polled Hereford Farm, Morrison, TN; Jernigan Farm, Columbia, TN; and Crouch Polled Hereford Farm, McMinnville, TN. **Semen \$25/Straw; \$75/Certificate**



**LOT 16 FTF POWERHOUSE 922G** {DLF, HYF, IEF, MSUDF}  
P44001609 01/15/2019

FTF PROSPECTOR 145Y  
FTF PORTERHOUSE 455B  
FTF VERONICA 227Z

HUTH PROSPECTOR K085  
FTF CHICK A BOOM 7227T  
TH 122 71I VICTOR 719T  
FTF FABULOUS 097X

FTF PRIME PRODUCT 226Z  
FTF PRIMETIME MISS 608D  
FTF MS REVOLUTION 424B

SHF RIB EYE M326 R117  
FTF CLASSIC MISS 0206X  
MSU TCF REVOLUTION 4R  
FTF TRINA 926W



Act BW		Adj WW		Adj YW		Adj IMF		Adj REA		Adj FAT	
72		743		1099		3.76		11.69		0.25	
CED	BW	WW	YW	SC	SCF	Milk	M&G	MCE	FAT	REA	Marb
10	0.8	71	113	1.9	19.6	35	70	8.5	.063	0.52	0.25



922G is a very complete, high performing, calving ease bull who is a maternal brother to FTF Testimony 828F, owned with Bourbeuse Bend Herefords in Beaufort, MO. He was the second high selling bull in our 2019 sale. Ratioed 92 BW, 112, WW, 107 YW, and 105 REA and IMF. True balance and performance. Retaining ½ semen interest. Homozygous polled.

Top 1% M&G, SC, 2% CEM, Milk, WW, YW, 10% \$BMI, BW, CED, Marb, 15% \$ CHB, 20% REA. **SHOW ME SELECT QUALIFIED**





## LOT 17

**FTF POWERHOUSE 917G** {DLF, HYF, IEF, MSUDF}  
P44001575 01/13/2019

FTF PROSPECTOR 145Y  
FTF PORTERHOUSE 455B  
FTF VERONICA 227Z

HUTH PROSPECTOR K085  
FTF CHICK A BOOM 7227T  
TH 122 71I VICTOR 719T  
FTF FABULOUS 097X

MSU TCF REVOLUTION 4R  
FTF MS REVOLUTION 626D  
OVF PRETTY MISS 702T

FELTONS LEGEND 242  
MSU TCF RACHAEL ET 54N  
FTF ENHANCER 540R  
OVF MADELINE ROSE 504R



Act BW		Adj WW		Adj YW		Adj IMF		Adj REA		Adj FAT	
80		693		1026		3.13		11.44		0.14	
CED	BW	WW	YW	SC	SCF	Milk	M&G	MCE	FAT	REA	Marb
7.1	1.6	61	96	1.3	17.7	32	63	6.4	.063	0.49	0.06

917G is a dark red, pigmented, eye appealing bull. His maternal brother is FTF Relevant 831F who was the high selling bull in our 2019 sale and is owned with Jordan Herefords, Warrenton, MO and BEEF-360. His dam is an ideal beef cow and among the top cows in our herd. Retaining ½ semen interest.

Homozygous polled.

Top 3% M&G, 5% Milk, 10% CEM, 15% WW, YW, 20% BW, SC, 25% \$BMI, REA. SHOW ME SELECT QUALIFIED



## LOT 18

**FTF POWERHOUSE 9412G** {DLF, HYF, IEF, MSUDF}  
P44001636 01/10/2019

FTF PROSPECTOR 145Y  
FTF PORTERHOUSE 455B  
FTF VERONICA 227Z

HUTH PROSPECTOR K085  
FTF CHICK A BOOM 7227T  
TH 122 71I VICTOR 719T  
FTF FABULOUS 097X

TH 122 71I VICTOR 719T  
FTF VERONICA 419B  
FTF GINGER 278Z

DRF JWR PRINCE VICTOR 71I  
KBCR 19D DOMINETTE 122  
FTF GARRETT 020X  
FTF CLASSIC MISS 0216X



Act BW		Adj WW		Adj YW		Adj IMF		Adj REA		Adj FAT	
84		614		1083		3.73		11.10		0.20	
CED	BW	WW	YW	SC	SCF	Milk	M&G	MCE	FAT	REA	Marb
4.2	3.1	67	111	1.2	20.8	31	64	2.2	.033	0.37	0.08

9412G is a very powerful and great hiped double bred 719T bull who is easy to find in the bull pen. He should make a top notch breeding bull.

Homozygous polled.

Top 2% M&G, YW, 3% WW, 10% \$BMI, Milk, 20% SC



## LOT 19

**FTF POWERHOUSE 9415G** {DLF, HYF, IEF, MSUDF}  
P44001637 01/11/2019

FTF PROSPECTOR 145Y  
FTF PORTERHOUSE 455B  
FTF VERONICA 227Z

HUTH PROSPECTOR K085  
FTF CHICK A BOOM 7227T  
TH 122 71I VICTOR 719T  
FTF FABULOUS 097X

GRANDVIEW 70AKS SONORA 145R  
FTF SONNETT 4213B  
FTF CHICK A BOOM 7222T

REMITALL ONLINE 122L  
DJB 46B BETH 1L  
FTF BOMBARDIER 309N  
FTF MISS RIGHT 790G



GEOPD X											
Act BW		Adj WW		Adj YW		Adj IMF		Adj REA		Adj FAT	
70		611		999		3.66		12.14		0.16	
CED	BW	WW	YW	SC	SCF	Milk	M&G	MCE	FAT	REA	Marb
3.0	1.7	63	99	1.0	16.6	33	64	5.5	.003	0.66	-.02

9415G is a standout from a phenotype standpoint that should make fantastic females. He ratioed BW, 105 WW, and 109 REA. Homozygous polled.

Top 2% M&G, 3% \$CHB, 4% Milk, REA, 10% WW, 15% CEM, YW, 25% \$BMI, BW





**LOT 20 FTF POWERHOUSE 9410G** {DLF, HYF, IEF, MSUDF}  
P44001634 01/09/2019

FTF PROSPECTOR 145Y  
FTF PORTERHOUSE 455B  
FTF VERONICA 227Z

HUTH PROSPECTOR K085  
FTF CHICK A BOOM 7227T  
TH 122 71I VICTOR 719T  
FTF FABULOUS 097X

NJW 73S W18 HOMETOWN 10Y ET  
FTF HOMETOWN HONEY 403B  
FTF LEGEND LADY 8103U

SHF WOMDER M326 W18 ET  
NJW P606 72N DAYDREAM 73S  
FELTONS LEGEND 242  
FTF CLASSY LADY 624S



Act BW		Adj WW		Adj YW		Adj IMF		Adj REA		Adj FAT	
82		614		1070		4.31		12.11		0.21	
CED	BW	WW	YW	SC	SCF	Milk	M&G	MCE	FAT	REA	Marb
0.1	4.5	59	103	1.6	19.6	34	64	-0.9	.023	0.40	0.20

9410G will catch your eye in the pen. He descends from a long line of great uddered females. He ratioed 106 WW, 105 YW, 109 REA, 112 IMF. That is performance.

Homozygous polled.

Top 2% M&G, 3% Milk, 4% SC, 10% \$BMI, YW, 15% Marb, 20% WW, 25% \$CHB



**FTF REVOLUTION 2429Z ET** {DLF, HYF, IEF}  
P43379596 08/20/2012

**Full Brother to Dam of Lot 21**



**FTF VERONICA 227Z** {DOD, DLF, HYF, IEF}  
P43289560 01/12/2012

**Dam of FTF PORTERHOUSE 455B**



**LOT 21 FTF POWERHOUSE 8621F** {DLF, HYF, IEF, MSUDF}  
P43975275 08/22/2018

FTF PROSPECTOR 145Y  
FTF PORTERHOUSE 455B  
FTF VERONICA 227Z

HUTH PROSPECTOR K085  
FTF CHICK A BOOM 7227T  
TH 122 71I VICTOR 719T  
FTF FABULOUS 097X

MSU TCF REVOLUTION 4R  
FTF MS REVOLUTION 2424Z  
JR MISS RIGHT 950J

FELTONS LEGEND 242  
MSU TCF RACHAEL ET 54N  
FTF EX REBEL 517E  
WHF MISS ROYAL KEY 47F



Act BW		Adj WW		Adj YW		Adj IMF		Adj REA		Adj FAT	
68		743		1080		3.04		10.45		0.29	
CED	BW	WW	YW	SC	SCF	Milk	M&G	MCE	FAT	REA	Marb
6.3	2.5	67	110	1.2	18.1	35	69	5.5	.063	0.40	0.09

8621F is an attractive 18 month old bull whose Dam of Distinction mother is also the granddam of FTF Confidence 6113D. Homozygous polled. Top 1% M&G, 2% Milk, YW, 3% WW, 15% CEM, \$BMI, 20% CED, SC  
SHOW ME SELECT QUALIFIED

**LOT 22 FTF POWERHOUSE 9409G** {DLF, HYF, IEF, MSUDF}  
P44001632 01/09/2019

FTF PROSPECTOR 145Y  
FTF PORTERHOUSE 455B  
FTF VERONICA 227Z

HUTH PROSPECTOR K085  
FTF CHICK A BOOM 7227T  
TH 122 71I VICTOR 719T  
FTF FABULOUS 097X

FTF GARRETT 020X  
FTF GINGER 480B  
FTF FABULOUS 2217Z

CMR TF 242 GARRETT 430  
FTF PRINCESS 842U  
FTF M326 FABRICATOR 838U  
FTF LEANNA 642S



Act BW		Adj WW		Adj YW		Adj IMF		Adj REA		Adj FAT	
80		596		1016		4.01		10.59		0.23	
CED	BW	WW	YW	SC	SCF	Milk	M&G	MCE	FAT	REA	Marb
6.7	2.5	60	100	1.2	17.8	34	64	5.6	.033	0.17	0.15

9409G is a big middled, stout made bull that is built to work. Homozygous polled.

Top 2% M&G, 3% Milk, 10% YW, 15% WW, 20% CED, SC  
SHOW ME SELECT QUALIFIED.





CE	BW	WW	YW	SC	SCF	Milk	M&G	MCE	FAT	REA	MARB
5.7	0.7	71	113	1.3	17.9	34	69	2.2	0.053	0.35	0.17

FTF Confidence 6113D descends from the great 950 cow family and with his performance ratios, EPD's, and phenotype, we knew he was bound to be an impact sire. He sires moderate birth weight calves with a bit more growth and frame than some of our other herd sires. We expect to see his influence here for a long time.



**LOT 23 FTF CONFIDENCE 993G** {DLF, HYF, IEF, MSUDF}  
P44001705 02/21/2019

FTF PROSPECTOR 145Y  
FTF CONFIDENCE 6113D  
FTF VERONICA 4107B

HUTH PROSPECTOR K085  
FTF CHICK A BOOM 7227T  
TH 122 71I VICTOR 719T  
FTF MS REVOLUTION 2424Z

FTF PROSPECTOR 145Y  
FTF MS PROSPECTOR 523C  
FTF SONNET 011X

HUTH PROSPECTOR K085  
FTF CHICK A BOOM 7227T  
GRANDVIEW 70AKS SONORA 145R  
FTF TESSIE 351N



Act BW		Adj WW		Adj YW		Adj IMF		Adj REA		Adj FAT	
80		806		1276		3.47		12.13		0.25	
CED	BW	WW	YW	SC	SCF	Milk	M&G	MCE	FAT	REA	Marb
0.3	4.0	71	126	1.4	16.0	30	66	1.4	.023	0.35	-.08

Big time performance and pigment here. This double bred Prospector son proves that cattle can get even better and more consistent through linebreeding. 993G is the youngest bull in the sale and ratioed 100 BW, 122 WW, 124 YW, and 109 REA. Dam's full sister sold to Circle F Herefords, Jefferson City, MO several years ago and is among their favorites. Retaining ½ semen interest. Homozygous polled. Top 1% M&G, WW, YW, 5% SC, 10% Milk.





CE	BW	WW	YW	SC	SCF	Milk	M&G	MCE	FAT	REA	MARB
5.0	2.9	65	108	1.2	13.0	32	64	3.4	0.033	0.13	0.24

FTF Prospector 145Y has made a big mark in the Hereford breed with his balanced performance, consistency, and maternal ability. His accuracy, EPD's, and high quality phenotype brings him to the top as one of the best all round bulls in the last decade.

Owned with Topp Herefords, Grace City, ND; Genex, Shawano, WI; Shady Oaks Farm, Baton Rouge, LA.



**LOT 24**

**FTF PORTERHOUSE 9408G ET** {DLF, HYF, IEF, MSUDF}  
P44057080 01/08/2019

HUTH PROSPECTOR K085  
FTF PROSPECTOR 145Y  
FTF CHICK A BOOM 7227T

RRH MR FELT 3008  
HUTH 34A PAULA 68F  
FTF BOMBARDIER 309N  
FTF LEANNA 480P

TH 122 71I VICTOR 719T  
FTF VERONICA 227Z  
FTF FABULOUS 097X

DRF JWR PRINCE VICTOR 71I  
KBCR 19D DOMINETTE 122  
FTF M326 FABRICATOR 838U  
FTF CHICK A BOOM 674S



Act BW		Adj WW		Adj YW		Adj IMF		Adj REA		Adj FAT	
75		597		969		3.35		9.88		0.21	
CED	BW	WW	YW	SC	SCF	Milk	M&G	MCE	FAT	REA	Marb
5.3	2.8	66	105	1.2	17.4	34	67	4.2	.013	0.20	-0.04

Lots 24-27 are ET full brothers to FTF Porterhouse 455B and are high quality prospects. 9408G is a spitting image of his full brother, FTF Porterhouse 455B.

Retaining ½ semen interest.

Homozygous polled.

Top 1% M&G, 3% Milk, 4% WW, 5% YW, 25% CEM



*Predictable Performance Genetics*



## LOT 25 FTF PORTERHOUSE 9413G ET {DLF, HYF, IEF, MSUDF}

HUTH PROSPECTOR K085  
FTF PROSPECTOR 145Y  
FTF CHICK A BOOM 7227T

RRH MR FELT 3008  
HUTH 34A PAULA 68F  
FTF BOMBARDIER 309N  
FTF LEANNA 480P

TH 122 71I VICTOR 719T  
FTF VERONICA 227Z  
FTF FABULOUS 097X

DRF JWR PRINCE VICTOR 71I  
KBCR 19D DOMINETTE 122  
FTF M326 FABRICATOR 838U  
FTF CHICK A BOOM 674S



Act BW		Adj WW		Adj YW		Adj IMF		Adj REA		Adj FAT	
74		577		984		3.47		10.24		0.21	
CED	BW	WW	YW	SC	SCF	Milk	M&G	MCE	FAT	REA	Marb
3.4	2.6	61	97	1.7	17.4	34	64	3.2	.023	0.32	0.07

9413G is a full brother to FTF Porterhouse 455B. He has a lot to offer with him being backed by a strong pedigree.

Homozygous Polled.

Top 1% SC, 2% M&G, 3% Milk, 15% WW, YW

## LOT 26 FTF PORTERHOUSE 8713F ET {DLF, HYF, IEF, MSUDF}

HUTH PROSPECTOR K085  
FTF PROSPECTOR 145Y  
FTF CHICK A BOOM 7227T

RRH MR FELT 3008  
HUTH 34A PAULA 68F  
FTF BOMBARDIER 309N  
FTF LEANNA 480P

TH 122 71I VICTOR 719T  
FTF VERONICA 227Z  
FTF FABULOUS 097X

DRF JWR PRINCE VICTOR 71I  
KBCR 19D DOMINETTE 122  
FTF M326 FABRICATOR 838U  
FTF CHICK A BOOM 674S



Act BW		Adj WW		Adj YW		Adj IMF		Adj REA		Adj FAT	
65		666		1109		2.74		10.31		0.17	
CED	BW	WW	YW	SC	SCF	Milk	M&G	MCE	FAT	REA	Marb
7.7	2.8	67	107	1.2	17.4	34	67	5.4	.023	0.30	0.00

18 month old bull. Full brother to FTF Porterhouse 455B. He'll make a great asset to any herd.

Retaining ½ semen interest. Homozygous polled.

Top 1% M&G, 2% WW, 3% Milk, 4% YW, 15% CED, CEM, 20% \$CHB, SC, 25% \$BMI. SHOW ME SELECT QUALIFIED



**FTF CHICK A BOOM 7227T** {DLF, HYF, IEF} AHA GE-EPD  
P42808579 02/11/2007

**Granddam of Lots 24-28**

## LOT 27 FTF PORTERHOUSE 8513F ET {DLF, HYF, IEF, MSUDF}

HUTH PROSPECTOR K085  
FTF PROSPECTOR 145Y  
FTF CHICK A BOOM 7227T

RRH MR FELT 3008  
HUTH 34A PAULA 68F  
FTF BOMBARDIER 309N  
FTF LEANNA 480P

TH 122 71I VICTOR 719T  
FTF VERONICA 227Z  
FTF FABULOUS 097X

DRF JWR PRINCE VICTOR 71I  
KBCR 19D DOMINETTE 122  
FTF M326 FABRICATOR 838U  
FTF CHICK A BOOM 674S



Act BW		Adj WW		Adj YW		Adj IMF		Adj REA		Adj FAT	
72		774		1134		3.23		12.31		0.13	
CED	BW	WW	YW	SC	SCF	Milk	M&G	MCE	FAT	REA	Marb
1.0	4.0	70	105	1.1	17.4	34	69	2.0	.003	0.39	0.05

18 month old bull. Full brother to FTF Porterhouse 455B. Big, stout made bull, ideal for cows.

Homozygous polled.

Top 10% YW, 15% WW, 25% CED, Marb

## LOT 28 FTF PORTERHOUSE 8307F {DLF, HYF, IEF, MSUDF}

HUTH PROSPECTOR K085  
FTF PROSPECTOR 145Y  
FTF CHICK A BOOM 7227T

RRH MR FELT 3008  
HUTH 34A PAULA 68F  
FTF BOMBARDIER 309N  
FTF LEANNA 480P

CMR TF 242 GARRETT 430  
FTF GAIL 007X  
FTF LINDY 8141U

FELTONS LEGEND 242  
TF COW MADE 920 226  
FTF LIMITED EDITION 404P  
FTF MISS RIGHT 318N



Act BW		Adj WW		Adj YW		Adj IMF		Adj REA		Adj FAT	
70		594		989		3.18		10.66		0.22	
CED	BW	WW	YW	SC	SCF	Milk	M&G	MCE	FAT	REA	Marb
5.1	2.9	61	103	1.2	15.4	23	54	2.5	.043	0.09	0.17

18 month old bull. A very nicely made, good performing Prospector son.

Homozygous Polled.

Top 1% M&G, WW, 3% Milk, 5% YW, 15% \$CHB, 25% \$BMI





## **LOT 29 FTF REVOLUTION 9435G ET** {DLF, HYF, IEF, MSUDF}

FELTONS LEGEND 242  
MSU TCF REVOLUTION 4R  
MSU TCF RACHAEL ET 54N

FELTONS DOMINO 774  
FELTONS G15  
REMITALL ONLINE 122L  
HH MISS ADV 786G 1ET

FTF M326 FABRICATOR 838U  
FTF FABULOUS 181Y  
FTFCLASSY LADY 856U

KCF BENNETT 3008 M326  
FTF BEAUTY 611F  
DR WORLD CLASS 517 10H  
FTF VELVET 425P



Act BW		Adj WW		Adj YW		Adj IMF		Adj REA		Adj FAT	
82		749		1175		3.48		12.89		0.21	
CED	BW	WW	YW	SC	SCF	Milk	M&G	MCE	FAT	REA	Marb
7.7	3.3	66	103	0.8	21.3	29	62	8.9	.033	1.09	0.17

Here is an ET son of one of the best females we have ever produced. His sire has been deceased for a long time and yet he is the foundation for modern Herefords. 9435G has big performance and power with calving ease and tremendous proven maternal traits. Homozygous Polled. Retaining 1/2 semen interest. Top 1% SC, 2% M&G, 3% Milk, 15% WW, YW SHOW ME SELECT QUALIFIED



## **LOT 30 FTF POWER BROKER 8117F** {DLF, HYF, IEF, MSUDF}

FTF PORTERHOUSE 455B  
FTF POWERHOUSE 6615D ET  
FTF TRENA 366N

FTF PROSPECTOR 145Y  
FTF VERONICA 227Z  
4K TRENT G605 L32  
FTF MISS RIGHT 122L

FTF PROSPECTOR 145Y  
FTF MS PROSPECTOR 6443D  
FTF MS REVOLUTION 2424Z

HUTH PROSPECTOR K085  
FTF CHICK A BOOM 7227T  
MSU TCF REVOLUTION 4R  
FTF MISS RIGHT 950J



Act BW		Adj WW		Adj YW		Adj IMF		Adj REA		Adj FAT	
58		593		972		3.00		11.53		0.20	
CED	BW	WW	YW	SC	SCF	Milk	M&G	MCE	FAT	REA	Marb
11.2	0.4	63	108	0.9	16.1	33	64	7.0	.083	0.38	0.06

**FTF POWERHOUSE 6615D ET** {DLF, HYF, IEF, MSUDF}  
P43790801 08/07/2016

**Sire of Lot 30**



18 month old bull. 8117F descends from the 950 and 366 cow families that have been so consistent over time. Tremendous EPD spread that puts him in the very top of the breed. Homozygous polled. Top 2% M&G, 4% CED, Milk, YW, 5% CEM, 10% BW, WW. SHOW ME SELECT QUALIFIED



## **LOT 31 FTF POWER BASE 978G** {DLF, HYF, IEF, MSUDF}

FTF PORTERHOUSE 455B  
FTF POWERHOUSE 6623D ET  
FTF TRENA 366N

FTF PROSPECTOR 145Y  
FTF VERONICA 227Z  
4K TRENT G605 L32  
FTF MISS RIGHT 122L

FTF VALUE ADDED 369A  
FTF VALENTINE 771E  
FTF MS PROSPECTOR 4207B

TH 122 71I VICTOR 719T  
FTF FABULOUS 181Y  
FTF PROSPECTOR 145Y  
FTF LADY RANGER 7101T



Act BW		Adj WW		Adj YW		Adj IMF		Adj REA		Adj FAT	
70		706		1064		4.05		13.70		0.22	
CED	BW	WW	YW	SC	SCF	Milk	M&G	MCE	FAT	REA	Marb
9.4	0.4	62	101	1.3	17.3	31	62	6.1	.033	0.70	0.19

**FTF POWERHOUSE 6623D ET** {DLF, HYF, IEF, MSUDF}  
P43790802 08/28/2016

**Sire of Lot 31**



A dark red and attractive 6623 son with great EPD's and performance. Ratioed 97 BW, 107 WW, 103 YW, 123 REA, and 113 IMF. Homozygous polled. Top 3% \$CHB, REA, 5% M&G, 10% BW, CED, CEM, SC, YW, 15% WW, 20% \$BMI, Marb. SHOW ME SELECT QUALIFIED.



*Predictable Performance Genetics*

# ANGUS BULLS



## LD CAPITALIST 316

17666102 02/07/2013

### Sire of Lot 32

## LOT 33

### DA PAYWEIGHT 7&7

19444649 09/12/2018

BASIN PAYWEIGHT 006S  
BASIN PAYWEIGHT 1682  
21AR O LASS 7017

VERMILLION PAYWEIGHT J847  
BASIN LUCY 3829  
HARB PENDLETON 765 JH  
21AR O LASS F24A

SYDGEN CC&7  
SKYBLAST FOREVER LADY  
CLEARWATER FOREVER LADY 48

S A F CONNECTION  
SYDGEN FOREVER LADY 4087  
RITO 112 OF 2536 RITO 616  
CLEARWATER FOREVER LADY 1002

Act BW		Adj WW		Adj YW		Adj IMF		Adj REA		Adj FAT	
		736		1005		3.90		11.80		0.20	
CED	BW	WW	YW	Milk	M&G	CEM	SC	FAT	REA	Marb	\$B
10.0	-0.3	62	104	36		16.0	1.43	.042	0.40	0.33	124

18 month old bull. This bull is well balanced and has a great EPD spread. ID #F02D

Top 1% CEM, 3% Milk, \$W, 10% \$M, 15% SC, 20% CED, BW, DMI  
SHOW ME SELECT QUALIFIED.

## LOT 35

### D B ALLIED 1807

19393930 08/30/2018

PLATTEMERE WEIGH UP K360  
SCHIEFELBEIN ALLIED 514  
FROSTY ELBA 5152

SITZ UPWARD 307R  
BARBARA OF PLATTEMERE 337  
SCHIEFELBEIN OBJECTIVE 980  
FROSTY IN FOCUS H179

SYDGEN TRUST 1061  
D B ROSE 1405  
D B ROSE 0505

SYDGEN TRUST 6228  
TC CHLOE 4003  
SAF STRATEGY 9015  
D B ROSE 0106

Act BW		Adj WW		Adj YW		Adj IMF		Adj REA		Adj FAT	
80		676		1020		4.57		11.40		0.18	
CED	BW	WW	YW	Milk	M&G	CEM	SC	FAT	REA	Marb	\$B
7.0	1.4	55	98	28		11.0		.005	0.38	0.78	133

18 month old bull. 1807 is a very good performing Allied son.  
Top 25% CEM, Milk, Marb, \$M, \$G  
SHOW ME SELECT QUALIFIED.

## LOT 32

### FTF CAPITALIST 8302F

19499859 08/20/2018

CONNEALY CAPITALIST 028  
LD CAPITALIST 316  
LD DIXIE ERICA 2053

S A V FINAL ANSWER 0035  
PRIDES PITA OF CONANGA 8821  
CA FUTURE DIRECTION 5321  
LD DIXIE ERICA OAR 0853

S A V BRILLIANCE 8077  
FTF MS BRILLIANCE 4353B  
FTF RITA 9101W

S A V BISMARCK 5682  
S A V BLACKCAP MAY 5270  
SS OBJECTIVE T510 OT26  
FTF GAMMER 7316T

Act BW		Adj WW		Adj YW		Adj IMF		Adj REA		Adj FAT	
70		732		1110		6.02		12.90		0.35	
CED	BW	WW	YW	Milk	M&G	CEM	SC	FAT	REA	Marb	\$B
9.0	0.2	56	98	27		11.0		.045	0.37	0.67	126

18 month old bull. Superb calving ease and growth bull that would be at the top of the group at any large Angus producer in the country. Fantastic cow family and EPD's. A big time carcass standout with a 6.02 ultrasound IMF score. Top 20% \$M, 25% CED

## LOT 34

### HVA CHARLO 1808

19408048 09/01/2018

O C C PAXTON 730P  
COLEMAN CHARLO 0256  
BOHI ABIGALE 6014

O C C FOCUS 813F  
O C C BLACKBIRD 736K  
SITZ TRAVELER 8180  
S A V ABIGALE 6062

O C C JET STREAM 825J  
O C C DIXIE ERICA 776T  
O C C DIXIE ERICA 903E

O C C EMBLAZON 854E  
O C C JUANADA 968G  
O C C CANDOR 763C  
O C C DIXIE ERICA 799B

Act BW		Adj WW		Adj YW		Adj IMF		Adj REA		Adj FAT	
80		682		1101		3.01		15.10		0.18	
CED	BW	WW	YW	Milk	M&G	CEM	SC	FAT	REA	Marb	\$B
8.0	0.4	47	82	26		-4.0	0.95	.036	0.64	0.13	90

18 month old bull. 1808 is a very muscular Ohlde bred ET bull out of Charlo. With that pedigree, his speciality should be to sire moderate, easy fleshing, great uddered females. Top 4% \$EN, 30% BW

SHOW ME SELECT QUALIFIED.

## LOT 36

### D B SOLUTION 1805

19393929 08/24/2018

MOGCK SURE SHOT  
KG SOLUTION 0018  
KG RITO LADY 8724

MYTTY IN FOCUS  
MOGCK BLACK LASS 2065  
KG ONWARD 6221  
KG RITO LADY 8187

PVF INSIGHT 0129  
D B ROSE 1602  
D B ROSE 1202

S A V BRILLIANCE 8077  
PVF MISSIE 790  
CONNEALY FINAL PRODUCT  
D B ROSE 0205

Act BW		Adj VWW		Adj YW		Adj IMF		Adj REA		Adj FAT	
65		703		946		2.41		11.0		0.11	
CED	BW	WW	YW	Milk	M&G	CEM	SC	FAT	REA	Marb	\$B
9.0	-1.1	58	98	23		10.0		.005	0.67	0.14	118

18 month old bull. Fantastic maternal pedigree here and great EPD's.  
Top 10% BW, 15% \$M, 30% CED, REA  
SHOW ME SELECT QUALIFIED.



# ANGUS BULLS



## PVF INSIGHT 0129

16805884 04/17/2010

### Sire of Lot 37

## LOT 37

## TWOF PROVEN SIGHT 8902

19336841 09/02/2018

S A V BRILLIANCE 8077  
PVF INSIGHT 0129  
PVF MISSIE 790

S A V BISMARCK 5682  
S A V BLACKCAP MAY 5270  
PVF NEW HORIZON 001  
PVF MISS RAPTOR 024

GRANGER GREAT FALLS 053  
TWOF PROVEN QUEEN 112A  
PVF PROVEN QUEEN

S A V FINAL ANSWER 0035  
GRANGER PRIDE 275  
PVF ALL PAYDAY 729  
DAMERON PVF PROVEN QUEEN010

Act BW		Adj WW		Adj YW		Adj IMF		Adj REA		Adj FAT	
79		713		1108		3.87		13.6		0.32	
CED	BW	WW	YW	Milk	M&G	CEM	SC	FAT	REA	Marb	\$B
0.0	3.2	65	111	25		6.0	0.52	-.002	1.07	0.08	147

8902 is big growth and maternal bull that will make beautiful daughters. His sire is a legend in the Angus breed and his dam is a Pathfinder.

Top 3% REA, 5% \$F, 10% DMI, 20% WW, 25% YW, \$B

## LOT 38

## TWOF DENVER IMPRESSION 8115

19336833 10/15/2018

EXAR DENVER 2002B  
TWOF DENVER 215  
TWOF PROVEN QUEEN 418

EXAR UPSHOT 0562B  
EXAR ROYAL LASS 1067  
PVF RADIANCE 0126  
PVF PROVEN QUEEN 2118

DAMERON FIRST IMPRESSION  
TWOF BELLE IMPRESSION 105  
HHA EXCEPTIONAL BLACKBIRD  
S A V BRILLIANCE 8077  
DAMERON NORTHERN MISS 3114  
HHA EXCEPTION 415  
CSF BLACKBIRD 273

Act BW		Adj WW		Adj YW		Adj IMF		Adj REA		Adj FAT	
85		711		1122		3.96		11.3		0.26	
CED	BW	WW	YW	Milk	M&G	CEM	SC	FAT	REA	Marb	\$B
-1.0	4.1	59	104	23		5.0		.012	0.45	0.20	120

8115 is a growth bull with lots of phenotype.

### A Note on the Angus Bulls:

We have owned a small number of high quality Angus females for nearly 25 years. For the last 15 years, we have purchased high quality Angus bulls from several very maternal Angus herds. We acquire them locally with the intent to develop them and sell to our bull customers. We have given genetic and nutritional advice to these herds from the beginning. This set of Angus bulls are as powerful and complete as ever.

Buy with confidence.

## LOT 39

## HVA RESOURCE 1807

19354476 08/29/2018

RITO 707 OF IDEAL 3407 7075  
S A V RESOURCE 1441  
S A V BLACKCAP MAY 4136

R R RITO 707  
IDEAL 3407 OF 1418 076  
S A V 8180 TRAVELER 004  
S A V MAY 2397

MF NET RETURN 8197  
MF EVERGREEN 2231  
NER EVERGREEN 0557

S A V 8180 TRAVELER 004  
S A V MAY 2436  
N BAR EMULATION EXT  
G T SYMBOL 200

Act BW		Adj WW		Adj YW		Adj IMF		Adj REA		Adj FAT	
77		709		1043		3.23		13.40		0.20	
CED	BW	WW	YW	Milk	M&G	CEM	SC	FAT	REA	Marb	\$B
0.0	3.1	58	104	21		1.0	0.49	.026	0.67	0.09	110

1807 is a well balanced growth and maternal bull.

Top 30% REA.

## LOT 40

## BLACK BALDY BULL 8627

08/27/2018

FTF RIB EYE 153Y  
FTF HUMDINGER 4303B  
FTF MISS REVOLUTION 119Y

SHF RIB EYE M326 R117  
FTF GARDEN PRINCESS 903W  
MSU TCF REVOLUTION 4R  
FTF CHICK A BOOM 587R

SYDGEN CC&7  
FTF FOREVER LADY 0354X  
PIEPER PRECISION ON 402

S A F CONNECTION  
SYDGEN FOREVER LADY 4087  
CONNEALY LEAD ON  
DP STOCKMAN PRECISION 103

Act BW		Adj VWW		Adj YW		Adj IMF		Adj REA		Adj FAT	
74											
CED	BW	WW	YW	Milk	M&G	CEM	SC	FAT	REA	Marb	\$B

This bull is an awesome individual that is very powerful with high performance. His Angus mother is a donor cow and is the foundation to most of our best Angus females. Ear tag # 8627. Actual WW 85 lbs. Actual YW 1140lbs.



Predictable Performance Genetics

# COWS

## FTF MS REVOLUTION 5205C {DLF, HYF, IEF, MSUDF}

P43579455 12/17/2014



CE	BW	WW	YW	SC	SCF	Milk	M&G	MCE	FAT	REA	MARB
5.6	1.1	59	89	1.2	21.6	29	58	5.1	0.023	0.68	0.10

FTF MS REVOLUTION 5205C is a highly productive Revolution daughter with exceptional performance. She has three calves with BW ratio at 92.7 and 3 calves with WW ratio of 103.7. Her son serves as a herd sire for Briscoe and Briscoe Cattle Company, New London, MO.

Retaining ½ embryo interest.

Heifer calf, FTF Miss Profit 029H, born 1/14/20, 78 lb bw, sired by FTF Prime Product 513C.



## FTF PRIME PRODUCT 832F {DLF, HYF, IEF}

P43911640 01/17/2018



Son of Lot 41

LOT 41

## FTF MS REVOLUTION 5205C {DLF, HYF, IEF, MSUDF}

P43579455 12/17/2014

FELTONS LEGEND 242  
MSU TCF REVOLUTION 4R  
MSU TCF RACHAEL ET 54N

FELTONS DOMINO 774  
FELTONS G15  
REMITALL ONLINE 122L  
HH MISS ADV 786G 1ET

FTF CLASS ACT 629S  
FTF CLASSIC MISS 883U  
FTF ENYA 553R

DR WORLD CLASS 517 10H  
FTF CANDACE 022K  
HUTH ENHANCER 2D  
FTF MISS FORMAT 322N



CED	BW	WW	YW	SC	SCF	Milk	M&G	MCE	FAT	REA	Marb
5.6	1.1	59	89	1.2	21.6	29	58	5.1	0.23	0.68	0.10

Retaining ½ embryo interest.

Heifer calf, FTF Miss Profit 029H, born 1/14/20, 78 lb bw, sired by FTF Prime Product 513C at side.





## COWS



**LOT 42**

**FTF ROSALINDA 5100C**

P43579440 4/01/2015

MSU TCF REVOLUTION 4R  
FTF REVOLUTION 2429Z ET  
JR MISS RIGHT 950J

FELTONS LEGEND 242  
MSU TCF RACHAEL ET 54N  
FTF EX REBEL 517E  
WHF MISS ROYAL KEY 47F

TH 122 71I VICTOR 719T  
FTF VERONICA 232Z  
FTF LEGEND LADY 8103U

DRF JWR PRINCE VICTOR 71I  
KBCR 19D DOMINETTE 122  
FELTONS LEGEND 242  
FTF CLASSY LADY 624S

CED	BW	WW	YW	SC	SCF	Milk	M&G	MCE	FAT	REA	Marb
3.0	3.2	56	92	0.6	21.9	23	51	0.7	.053	0.62	0.00

5100C is a nicely uddered, well built FTF Revolution 2429Z ET daughter. She comes from a great line of udders and has DOD and SOD's on both sides of her pedigree.

Heifer calf, FTF Tonya 041H, born 1/17/20, 82 lb bw, sired by Huth FTF Torque C002 at side.



**LOT 43**

**FTF VALENTINE 572C**

P43579552 02/02/2015

TH 122 71I VICOTR 719T  
FTF VALUE ADDED 369A  
FTF FABULOUS 181Y

DRF JWR PRINCE VICTOR 71I  
KBCR 19D DOMINETTE 122  
FTF M326 FABRICATOR 838U  
FTF CLASSY LADY 856U

KCF BENNETT 3008 M326  
FTF M326 CHICK 124Y  
FTF CHICK A BOOM 874U

RRH MR FELT 3008  
KCF MISS 459 F284  
FTF BOMBARDIER 309N  
FTF ELENA 048K

CED	BW	WW	YW	SC	SCF	Milk	M&G	MCE	FAT	REA	Marb
1.4	2.4	59	92	1.3	20.5	23	52	0.2	-.017	0.35	0.04

572C is a very nice, complete 369 daughter. The 369's have been fool proof on producing top notch females and she fits the bill. She has an abundance of bred in longevity with both her maternal grandmother and paternal great grandmother still in production here at 12 years of age. Her son sells as Lot 4. Calf is goggle eyed.

Retaining ½ embryo interest.

Heifer calf, FTF Tonya 027H, born 1/13/20, 83 lb bw, sired by Huth FTF Torque C002 at side.



**LOT 44**

**FTF VALENTINE 589C**

P43579566 02/14/2015

TH 122 71I VICOTR 719T  
FTF VALUE ADDED 369A  
FTF FABULOUS 181Y

DRF JWR PRINCE VICTOR 71I  
KBCR 19D DOMINETTE 122  
FTF M326 FABRICATOR 838U  
FTF CLASSY LADY 856U

FTF TOP SECRET 801U  
FTF SECRET SUE 2412Z  
FTF LEANNA 648S

KT TOP SECRET 1030  
FTF CHICK A BOOM 660S  
FTF LIMITED EDITION 232  
FTF CANDACE 035K

CED	BW	WW	YW	SC	SCF	Milk	M&G	MCE	FAT	REA	Marb
8.2	-0.5	53	74	1.1	20.6	27	54	6.9	.053	0.22	0.13

589C is a dark red, heavy pigmented 369 daughter with a fantastic udder. Her mother was a highlight of our 2017 sale going to Reynolds Herefords, Huntsville, MO. Retaining ½ embryo interest.

Heifer calf, FTF Tonya 053H, born 1/23/20, 77 lb bw, sired by Huth FTF Torque C002 at side.



*Predictable Performance Genetics*

**LOT 45****FTF IN FULL BLOOM 5207C**

P43579457 12/18/2014

MSU TCF REVOLUTION 4R  
FTF REVOLUTION 224Z  
FTF BOOM AND BLOOM 8211U

FELTONS LEGEND 242  
MSU TCF RACHAEL ET 54N  
FTF BOOMER 29F 551R  
FTF LEANNA 480P

FTF BONUS 678S  
OVF BONITA 8136U  
OVF SARAH ROSE

FTF BOMBARDIER 309N  
FTF SOPRANO 212M  
FTF RIGHT TIME 178L  
OVF KENTUCKY ROSE

CED	BW	WW	YW	SC	SCF	Milk	M&G	MCE	FAT	REA	Marb
5.3	2.5	59	102	0.9	16.0	30	59	5.5	.043	0.61	0.03

5207C is a big producing female with 3 calves recorded a BW ratio of 100.7 and WW ratio of 104.7. Her sire is a maternal brother to the dam of TH Frontier 174E. Her Dam of Distinction mother is still in production here at 12 years old.

Heifer calf, FTF Tonya 011H, born 1/11/20, 82 lb bw, sired by Huth FTF Torque C002 at side.

**LOT 46****FTF MS PROSPECTOR 523C**

P43579484 01/13/2015

HUTH PROSPECTOR K085  
FTF PROSPECTOR 145Y  
FTF CHICK A BOOM 7227T

RRH MR FELT 3008  
HUTH 34A PAULA 68F  
FTF BOMBARDIER 309N  
FTF LEANNA 480P

GRANDVIEW 7OAKS SONORA 145R  
FTF SONNET 011X  
FTF TESSIE 351N

REMITALL ONLINE 122L  
DJB 46B BETH 1L  
FTF TURN KEY 117L  
FTF ELENA 048K

CED	BW	WW	YW	SC	SCF	Milk	M&G	MCE	FAT	REA	Marb
-5.4	4.5	59	99	1.3	14.0	27	57	0.5	-.037	0.23	0.08

523C can create great calves. She has 3 calves that recorded and average BW ratio of 97.7 and WW ratio of 104.3. Her son, FTF Confidence 993G, sells as Lot 23.

Heifer calf, FTF Tonya 062H, born 2/02/20, 84 lb bw, sired by Huth FTF Torque C002 at side.

**LOT 47****FTF SONNETT 508C**

P43579438 01/10/2015

REMITALL ONLINE 122L  
GRANDVIEW 7OAKS SONORA 145R  
DJB 46B BETH 1L

REMITALL EMBRACER 8E  
REMITALL CATALINA 24H  
REMITALL BOOMER 46B  
PW VICTORIA 964 8114

FTF BONUS 678S  
OVF BONITA 8102U  
OVF PRINCESS FIONA 501R

FTF BOMBARDIER 309N  
FTF SOPRANO 212M  
FTF FORMATION 315N  
TRM H353 PRINCESS 2230

CED	BW	WW	YW	SC	SCF	Milk	M&G	MCE	FAT	REA	Marb
3.5	1.5	46	77	0.8	14.4	29	52	6.3	.013	0.38	0.10

508C is a calf maker! She has 3 calves that recorded an average BW ratio of 92 and WW ratio of 101.3. She has a daughter working at Seven Hills Livestock, Clark, MO. Pasture exposed to Huth FTF Torque C002 from 4/6/19 to 6/11/19 and to FTF Prime Product 821F from 6/12/19 to 7/6/19.



## COWS

**LOT 48**
**FTF PRIMETIME MISS 5308C**

P43579491 3/15/2015

SHF RIB EYE M326 R117  
FTF PRIME PRODUCT 226Z  
FTF CLASSIC MISS 0206X

KCF BENNETT 3008 M326  
HVH MISS HUDSON 83K 8M  
FTF CLASS ACT 629S  
FTF ENYA 303N

FTF CLASS ACT 736T  
FTF CLASSIC BEAUTY 907W  
FTF LEANNA 636S

DR WORLD CLASS 517 10H  
FTF BEAUTY 611F  
FTF LIMITED EDITION 232  
FTF CANDACE 123L

**LOT 49**
**FTF SONNETT 4205**

P43489210 12/17/2013

REMITALL ONLINE 122L  
GRANDVIEW 7OAKS SONORA 145R  
DJB 46B BETH 1L

REMITALL EMBRACER 8E  
REMITALL CATALINA 24H  
REMITALL BOOMER 46B  
PW VICTORIA 964 8114

FTF BOMBARDIER 309N  
FTF CHICK A BOOM 7130T  
FTF FRAN 161L

CS BOOMER 29F  
FTF TEMPTRESS 688F  
FTF FORMAT 904J  
JR MISS RIGHT 950J

CED	BW	WW	YW	SC	SCF	Milk	M&G	MCE	FAT	REA	Marb
7.1	0.7	57	83	1.3	23.4	27	56	6.4	.033	0.22	0.18

5308C is a moderate sized, neatly uddered Prime Product daughter. Her dam is still in production at 11 years old and has consistently been one of our top fall calving cows. Heifer calf, FTF Tonya 061H, born 2/1/20, 72 lb bw, sired by Huth FTF Torque C002 at side.



CED	BW	WW	YW	SC	SCF	Milk	M&G	MCE	FAT	REA	Marb
-0.1	2.3	52	83	0.8	14.9	26	52	4.8	.033	0.43	-.03

4205 is a nicely uddered cow that descends from the legendary 950 cow family. Heifer calf, FTF Tonya 009H, born 1/09/20, 78 lb bw, sired by Huth FTF Torque C002 at side.

**LOT 50**
**FTF SWEET REVOLUTION 476B**

P43489312 02/04/2014

MSU TCF REVOLUTION 4R  
FTF REVOLUTION 126Y  
FTF BON BON 526R

FELTONS LEGEND 242  
MSU TCF RACHAEL ET 54N  
CS BOOMER 29F  
FTF MISS RIGHT 930J

GRANDVIEW 7OAKS SONORA 145R  
FTF SONNET 012X  
FTF LEANNA 454P

REMITALL ONLINE 122L  
DJB 46B BETH 1L  
FTF LIMITED EDITION 232  
FTF CANDACE 123L

CED	BW	WW	YW	SC	SCF	Milk	M&G	MCE	FAT	REA	Marb
3.7	2.9	49	79	0.9	19.2	24	48	7.0	.043	0.43	0.12

476B is a very attractive, heavily pigmented and productive female. Her son sells as Lot 9. We have a daughter retained in our herd as well. Last year her son sold in our sale to Preston Ross. Pasture exposed to Huth FTF Torque C002 from 4/6/19 to 6/11/19 and to FTF Prime Product 821F from 6/12/19 to 7/6/19.

**LOT 51**
**FTF VALENTINE 566C**

P43579546 1/31/2015

TH 122 71I VICOTR 719T  
FTF VALUE ADDED 369A  
FTF FABULOUS 181Y

DRF JWR PRINCE VICTOR 71I  
KBCR 19D DOMINETTE 122  
FTF M326 FABRICATOR 838U  
FTF CLASSY LADY 856U

DR WORLD CLASS 517 10H  
FTF CLASSY LADY 128Y  
FTF CHICK A BOOM 574R

FELTONS 517  
VPI MARATHON LADY 0081  
FTF BOMBARDIER 309N  
FTF CANDACE 154L

**LOT 52**
**FTF MS PROSPECTOR 538C**

P43579508 01/16/2015

HUTH PROSPECTOR K085  
FTF PROSPECTOR 145Y  
FTF CHICK A BOOM 7227T

RRH MR FELT 3008  
HUTH 34A PAULA 68F  
FTF BOMBARDIER 309N  
FTF LEANNA 480P

KCF BENNETT 3008 M326  
FTF M326 LADYRANGER 2211Z  
FTF LADY RANGER 7101T

RRH MR FELT 3008  
KCF MISS 459 F284  
MC RANGER 9615  
FTF MISS RIGHT 122L

CED	BW	WW	YW	SC	SCF	Milk	M&G	MCE	FAT	REA	Marb
0.9	3.5	73	107	1.7	23.7	30	66	4.9	-.037	0.56	0.01

566C is another nicely uddered, big bodied 369 daughter whose Dam of Distinction mother is still a top producer at 9 years old. Heifer calf, FTF Tonya 078G, born 2/15/2020, 85lb bw, sired by Huth FTF Torque C002 at side.

CED	BW	WW	YW	SC	SCF	Milk	M&G	MCE	FAT	REA	Marb
3.8	1.6	55	89	0.9	14.9	24	51	1.7	.003	0.31	0.21

538C is a quality Prospector daughter whose mother was purchased in our 2017 sale by Frerichs Brothers, Armington, IL. Pasture exposed to Huth FTF Torque C002 from 4/6/19 to 6/11/19 and to FTF Prime Product 821F from 6/12/19 to 7/6/19.


*Predictable Performance Genetics*

## FALL PAIRS

### FTF MS REVOLUTION 3368A {DLF, HYF, IEF}

P43438732 09/04/2013



#### LOT 53 FTF MS REVOLUTION 3368A {DLF, HYF, IEF}

P43438732 09/04/2013

FELTONS LEGEND 242  
MSU TCF REVOLUTION 4R  
MSU TCF RACHAEL ET 54N

FELTONS DOMINO 774  
FELTONS G15  
REMITALL ONLINE 122L  
HH MISS ADV 786G 1ET

FTF BOOMER 29F 551R  
FTF BOOM AND BLOOM 9373W  
FTF CANDACE 126L

CS BOOMER 29F  
FTF MISS RIGHT 031K  
TCC CANADIAN BLEND 3E  
FTF TEMPTRESS 688F

#### LOT 53A FTF PIPER 9709G

P44087003 09/02/2019

FTF PORTERHOUSE 455B  
FTF POWERHOUSE 6457D  
FTF FLIRTATIOUS 2403Z

FTF PROSPECTOR 145Y  
FTF VERONICA 227Z  
FTF M326 050X  
FTF CLASSIC MISS 879U

MSU TCF REVOLUTION 4R  
FTF MS REVOLUTION 3368A  
FTF BOOM AND BLOOM 9373W

FELTONS LEGEND 242  
MSU TCF RACHAEL ET 54N  
FTF BOOMER 29F 551R  
FTF CANDACE 126L



CED	BW	WW	YW	SC	SCF	Milk	M&G	MCE	FAT	REA	Marb
3.9	1.9	52	85	1.0	20.9	22	49	4.7	.053	0.77	0.08

CED	BW	WW	YW	SC	SCF	Milk	M&G	MCE	FAT	REA	Marb
3.7	2.9	61	96	1.2	20.2	25	55	4.8	.033	0.61	0.07

3368A is a fantastic female from the same cow family as TH Frontier 174E. Her son FTF Powerhouse 7443E was purchased by Genex and is currently being marketed primarily to the Chinese and European markets. Retaining ½ embryo interest.

Bred AI on 11/21/19 to TH Frontier 174E and pasture exposed to EFBeef B413 Primestock E007 from 11/23/19 to 2/07/20.

#### LOT 54 OAKS SHOWTIME 1015C

P43646007 10/15/2015

CRR ABOUT TIME 743  
RST TIMES A WASTIN 0124  
RST MS 1000 BLAZER 2029

THM DURANGO 4037  
CRR D03 CASSIE 206  
MJB BLAZER 1000  
MS RST 858 VICTOR 9059

REMITALL ONLINE 122L  
OAKS 122L SHOWN OFF 417Z ET  
STAR ERRIKA RCR 28L

REMITALL EMBRACER 8E  
REMITALL CATALINA 24H  
CS BOOMER 29F  
STAR ROCKIN ERICA 38F

#### LOT 54A FTF PROMISE 9707G

P44087001 08/30/2019

FTF PROSPECTOR 145Y  
FTF PORTERHOUSE 455B  
FTF VERONICA 227Z

HUTH PROSPECTOR K085  
FTF CHICK A BOOM 7227T  
TH 122 71I VICTOR 719T  
FTF FABULOUS 097X

RST TIMES A WASTIN 0124  
OAKS SHOWTIME 1015C  
OAKS 122L SHOWN OFF 417Z ET

CRR ABOUT TIME 743  
RST MS 1000 BLAZER 2029  
REMITALL ONLINE 122L  
STAR ERRIKA RCR 28L

CED	BW	WW	YW	SC	SCF	Milk	M&G	MCE	FAT	REA	Marb
0.9	3.8	62	102	1.0	13.8	20	51	4.3	-.037	0.43	-.04

CED	BW	WW	YW	SC	SCF	Milk	M&G	MCE	FAT	REA	Marb
3.8	2.0	60	100	1.4	15.8	28	58	5.6	.013	0.33	0.09

1015C is a truly an outstanding 4 year old female we purchased in the Missouri Opportunity Sale several years ago from the Allscheid family in Waterloo, IL. She is a moderate framed female, a great mother, and descends from the Rockin Erica cow family. Her heifer calf is dynamite! Retaining ½ embryo interest on Lot 54A.

Bred AI on 11/21/19 to TH Frontier 174E and pasture exposed to EFBeef B413 Primestock E007 from 11/23/19 to 2/07/20.





## BRED HEIFERS

### FTF RELEVANT 831F {DLF, HYF, IEF}

P43911639 01/16/2018

#### Service Sire of Bred Heifers



### LOT 55

### FTF PANSY 8309F

P43975262 09/17/2018

FTF VALUE ADDED 369A  
FTF PREMIUM 6109D  
FTF MS PROSPECT 377A

TH 122 71I VICOTR 719T  
FTF FABULOUS 181Y  
FTF PROSPECTOR 145Y  
FTF LINDY 763T

FTF CLASS ACT 618S  
JJH CLASY SHANA 834U  
OVF SHANA ROSE

DR WORLD CLASS 517 10H  
FTF TRENA 366N  
FTF RIGHT TIME 178L  
OVF ROSE OF SHARON 902

CED	BW	WW	YW	SC	SCF	Milk	M&G	MCE	FAT	REA	Marb
3.2	2.7	61	91	1.1	18.6	31	61	4.9	.013	0.33	0.03

8309F is an attractive female whose 12 year old dam has put 8 progeny in registered herds so far. This consistent cow family was started from Becky (Ridder) Mott's first cow she got over 30 years ago. Bred AI on 11/22/19 to FTF Relevant 831F and pasture exposed to FTF Tested 8620F ET from 11/24/19 to 3/21/20.

### LOT 56

### FTF CHERISH 8311F

P43975264 10/04/2018

MHPH 521X ACTION 106A  
DOSS 106A CHALLENGER DHC7  
DHF STORMIE 206

TH 122 71I VICTOR 521X ET  
MHPH 301W DAINTY 205Y  
MSU TCF REVOLUTION 4R  
GLENGROVE SHIRLEY S22

FTF RIB EYE 153Y  
FTF WHATS COOKIN? 4318B  
FTF BOOM AND BLOOM 175Y

SHF RIB EYE M326 R117  
FTF GARDEN PRINCESS 903W  
FTF BOOMER 29F 551R  
FTF TRENA 366N

CED	BW	WW	YW	SC	SCF	Milk	M&G	MCE	FAT	REA	Marb
-0.4	4.0	60	96	0.6	18.0	25	55	0.7	.003	0.53	0.04

This Challenger daughter descends from the Trena 366 cow family and is very attractive.

Bred AI on 11/22/19 to FTF Relevant 831F and pasture exposed to FTF Tested 8620F ET from 11/24/19 to 3/21/20.

### LOT 57

### FTF RADIANT 8726F

P43975290 09/16/2018

FTF REVOLUTION 2425Z ET  
OVF REPUTATION 406B  
FTF REBECCA 2426Z

MSU TCF REVOLUTION 4R  
JR MISS RIGHT 950J  
SHF RIB EYE M326 R117  
JR MISS RIGHT 950J

FTF PROSPECTOR 145Y  
FTF MS PROSPECTOR 5443C  
FTF TOUCH OF CLASS 0326

HUTH PROSPECTOR K085  
FTF CHICK A BOOM 7227T  
FTF CLASS ACT 618S  
FTF CANDACE 0479K

CED	BW	WW	YW	SC	SCF	Milk	M&G	MCE	FAT	REA	Marb
3.3	3.3	54	89	0.5	17.7	26	53	3.0	.023	0.28	0.17

8726F is a well built bred heifer with a very maternal pedigree being double bred to the celebrated 950 cow.

Bred AI on 11/22/19 to FTF Relevant 831F and pasture exposed to FTF Tested 8620F ET from 11/24/19 to 3/21/20.

### LOT 58

### FTF LADY 8634F

P43975278 09/08/2018

KJ C&L J119 LOGIC 023R ET  
FTF LOGIC 339A  
FTF CLASSIC MISS 0206X

DRF JWR PRINCE VICTOR 71I  
SHF INTERSTATE D03 J119  
FTF CLASS ACT 629S  
FTF ENYA 303N

FTF CLASS ACT 629S  
FTF CLASSIC MISS 879U  
FTF CHICK A BOOM 587R

DR WORLD CLASS 517 10H  
FTF CANDACE 022K  
FTF BOMBARDIER 309N  
FTF RITA 258M

CED	BW	WW	YW	SC	SCF	Milk	M&G	MCE	FAT	REA	Marb
2.4	1.5	43	78	1.0	22.6	28	49	4.3	.003	0.13	0.04

8634F's sire has produced some very nice females and is Prime Product's maternal brother. Her dam is still in production at 12 years old and her granddam is a foundation 587 cow. Bred AI on 11/22/19 to FTF Relevant 831F and pasture exposed to FTF Tested 8620F ET from 11/24/19 to 3/21/20.

### LOT 59

### FTF MISS HUMDINGER 8463F

P43975267 09/11/2018

FTF RIB EYE 153Y  
FTF HUMDINGER 4303B  
FTF MISS REVOLUTION 119Y

SHF RIB EYE M326 R117  
FTF GARDEN PRINCESS 903W  
MSU TCF REVOLUTION 4R  
FTF CHICK A BOOM 587R

FTF CLASS ACT 629S  
FTF CLASSIC MISS 0206X  
FTF ENYA 303N

DR WORLD CLASS 517 10H  
FTF CANDACE 022K  
HUTH ENHANCER 2D  
FTF CANDACE 143L

CED	BW	WW	YW	SC	SCF	Milk	M&G	MCE	FAT	REA	Marb
6.5	0.3	49	85	1.2	21.4	29	53	5.7	.023	0.26	0.19

Here is an opportunity to purchase a maternal sister to FTF Prime Product 226Z. Deep bodied and well built, she is bound to be a great foundation female. Dehorned. Bred AI on 11/22/19 to FTF Relevant 831F and pasture exposed to FTF Tested 8620F ET from 11/24/19 to 3/21/20.



*Predictable Performance Genetics*

# BRED HEIFERS

## KCF MISS 3008 N344 {DLF, HYF, IEF, MSUDF}

P42430118 09/23/2003

### Donor Dam of Lot 60



## LOT 60

## FTF MS PROSPECTOR 8462F ET

P44008664 08/17/2018

HUTH PROSPECTOR K085  
FTF PROSPECTOR 145Y  
FTF CHICK A BOOM 7227T

RRH MR FELT 3008  
HUTH 34A PAULA 68F  
FTF BOMBARDIER 309N  
FTF LEANNA 480P

RRH MR FELT 3008  
KCF MISS 3008 N344  
KCF MISS H119 L404

FELTONS 517  
RRH MS VICT 6191  
KCF BENNETT 774 H119  
KCF MISS D217 H333

CED	BW	WW	YW	SC	SCF	Milk	M&G	MCE	FAT	REA	Marb
4.9	2.3	61	103	1.4	14.1	28	59	3.9	.013	0.05	0.25

8462F is an embryo calf from the N344 donor dam who has been very influential in the breed. N344 is the mother of the ABS bull KCF Bennett 9126J R294 and the granddam of Gerber Anodyne. Bred AI on 11/22/19 to FTF Relevant 831F and pasture exposed to FTF Tested 8620F ET from 11/24/19 to 3/21/20.

## LOT 62

## FTF MS REVOLUTION 8516F ET

P43975268 08/29/2018

FELTONS LEGEND 242  
MSU TCF REVOLUTION 4R  
MSU TCF RACHAEL ET 54N

FELTONS DOMINO 774  
FELTONS G15  
REMITALL ONLINE 122L  
HH MIS ADV 786G 1ET

FTF M326 FABRICATOR 838U  
FTF FABULOUS 181Y  
FTF CLASSY LADY 856U

KCF BENNETT 3008 M326  
FTF BEAUTY 611F  
DR WORLD CLASS 517 10H  
FTF VELVET 425P

CED	BW	WW	YW	SC	SCF	Milk	M&G	MCE	FAT	REA	Marb
3.3	2.6	62	95	1.2	21.3	29	60	6.7	.023	0.82	0.15

8516F is a 4R embryo female out of the influential 181 donor dam that is owned with Steinbeck Farms, Hermann, MO. Bred AI on 11/22/19 to FTF Relevant 831F and pasture exposed to FTF Tested 8620F ET from 11/24/19 to 3/21/20.

## LOT 61

## FTF MS REVOLUTION 8725F

P43975289 08/31/2018

FELTONS LEGEND 242  
MSU TCF REVOLUTION 4R  
MSU TCF RACHAEL ET 54N

FELTONS DOMINO 774  
FELTONS G15  
REMITALL ONLINE 122L  
HH MIS ADV 786G 1ET

MHPH 521X ACTION 106A  
DOSS FTF106 A CAITLYN DHC 47ET  
KCF MISS 3008 N344

TH 122 71I VICTOR 521X ET  
MHPH 301 W DAINITY 205Y  
RRH MR FELT 3008  
KCF MISS H119 L404

CED	BW	WW	YW	SC	SCF	Milk	M&G	MCE	FAT	REA	Marb
2.4	3.4	68	107	1.2	18.1	24	58	2.9	.013	0.65	0.12

8725F is a very nice 4R female from the N344 cow family. She performed well with a WW ratio of 109. Bred AI on 11/22/19 to FTF Relevant 831F and pasture exposed to FTF Tested 8620F ET from 11/24/19 to 3/21/20.

## LOT 64

## FTF CHERISH 8715F

P43975508 08/31/2018

MHPH 521X ACTION 106A  
DOSS 106A CHALLENGER DHC7  
DHF STORMIE 206

TH 122 71I VICTOR 521X ET  
MHPH 301W DAINITY 205Y  
MSU TCF REVOLUTION 4R  
GLEN GROVE SHIRLEY S22

MSU TCF REVOLUTION 4R  
FTF MS REVOLUTION 5362C  
FTF BOOM AND BLOOM 9373W

FELTONS LEGEND 242  
MSU TCF RACHAEL ET 54N  
FTF BOOMER 29F 551R  
FTF CANDACE 126L

CED	BW	WW	YW	SC	SCF	Milk	M&G	MCE	FAT	REA	Marb
0.3	3.8	58	93	0.7	17.8	24	54	2.1	.033	0.64	0.06

8715F is a high quality Challenger daughter whose dam is a full sister to the Lot 53 female and is from the same cow family as Frontier. Bred AI on 11/22/19 to FTF Prime Product 226Z and pasture exposed to FTF Tested 8620F ET from 11/24/19 to 3/21/20.

## LOT 63

## FTF RADIANT 8724F

P43975288 10/16/2018

FTF REVOLUTION 2425Z ET  
OVF REPUTATION 406B  
FTF REBECCA 2426Z

MSU TCF REVOLUTION 4R  
JR MISS RIGHT 950J  
SHF RIB EYE M326 R117  
JR MISS RIGHT 950J

FTF QUALITY BEEF 330A  
FTF QUALITY QUEEN 5458C  
FTF FLIRTATIOUS 2432Z

KJ C&L J119 LOGIC 023R ET  
FTF ROSE RANGER 018X  
FTF M326 050X  
FTF FAITH 632S

CED	BW	WW	YW	SC	SCF	Milk	M&G	MCE	FAT	REA	Marb
2.4	3.1	54	86	0.6	18.9	25	52	2.7	.033	0.47	0.26

No question on quality here, packed with a powerful pedigree including 950, Revolution, Ribeye, and Logic. Bred AI on 11/22/19 to /S Mandate 66589 ET and pasture exposed to FTF Tested 8620F ET from 11/24/19 to 3/21/20.





## BRED HEIFERS

### FTF CONFIDENCE 6113D {DLF, HYF, IEF, MSUDF}

P43751234 09/08/2016

**Full Brother to Lot 65**



### LOT 65

### FTF MS PROSPECTOR 8305F

P43975261 08/25/2018

HUTH PROSPECTOR K085  
FTF PROSPECTOR 145Y  
FTF CHICK A BOOM 7227T

RRH MR FELT 3008  
HUTH 34A PAULA 68F  
FTF BOMBARDIER 309N  
FTF LEANNA 480P

TH 122 71I VICOTR 719T  
FTF VERONICA 4107B  
FTF MS REVOLUTION 2424Z

DRF JWR PRINCE VICTOR 71I  
KBCR 19D DOMINETTE 122  
MSU TCF REVOLUTION 4R  
JR MISS RIGHT 950J

CED	BW	WW	YW	SC	SCF	Milk	M&G	MCE	FAT	REA	Marb
2.8	2.5	69	109	1.2	17.9	34	68	0.8	.023	0.35	0.11

This full sister to FTF Confidence 6113D is as good as it gets. She ratioed 96 BW and 110 WW. This Prospector daughter is dark red and heavily pigmented. She has a tremendous future and we look forward to seeing what she will do. Retaining ½ embryo interest.

Bred AI on 11/22/19 to /S Mandate 66589 ET and pasture exposed to FTF Tested 8620F ET from 11/24/19 to 3/21/20.

### LOT 66

### FTF PRIMETIME MISS 8526F

P43975271 09/22/2018

SHF RIB EYE M326 R117  
FTF PRIME PRODUCT 226Z  
FTF CLASSIC MISS 0206X

KCF BENNETT 3008 M326  
HVH MISS HUDSON 83K  
FTF CLASS ACT 629S  
FTF ENYA 303N

FTF TOP SECRET 801U  
FTF SECRET SHANA 0111X  
JJH CLASY SHANA 8348U

KT TOP SECRET 1030  
FTF CHICK A BOOM 660s  
FTF CLASS ACT 618S  
OVF SHANA ROSE

CED	BW	WW	YW	SC	SCF	Milk	M&G	MCE	FAT	REA	Marb
2.8	1.8	60	92	1.5	21.5	36	66	4.6	.003	0.37	0.17

This Prime Product female is one of the best we have ever produced in terms of quality and performance. She ratioed 95 BW and 133 WW. Her 10 year old dam has a great udder, is a true workhorse, and comes from the OVF 953 cow family. Retaining ½ embryo interest.

Bred AI on 11/22/19 to FTF Relevant 831F and pasture exposed to FTF Tested 8620F ET from 11/24/19 to 3/21/20.

### LOT 67 A & B

### 2 BLACK BALDY BRED HEIFERS

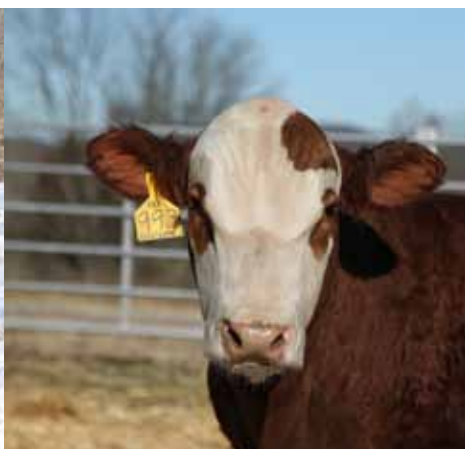
Bred AI on 11/22/19 to the Angus bull LD Capitalist 316 (see page 20) and pasture exposed to FTF Tested 8620F ET from 11/24/19 to 3/21/20.

**67A** - Ear tag # 8505. Prime Product x commercial Angus female

**67B** - Ear tag # 8521. Prime Product x black baldy female



**Lot 52**



**Lot 23**



**Lot 51**



Predictable Performance Genetics

## SPRING HEIFERS

**TH FRONTIER 174E** {DLF, HYF, IEF, MSUDF}  
P43818822 01/30/2017



**Sire of Spring Heifers**



**LOT 68 FTF MS FRONTIER 945G**  
P44001660 01/19/2019

TH 403A 475Z PIONEER 358C ET TH 89T 755T STOCKMAN 475Z  
TH FRONTIER 174E TH 71U 17Y RITA 403A  
FTF TRUSTING LADY 312A NJW 73S M326 TRUST 100W ET  
FTF BOOM AND BLOOM 8211U

FTF REVOLUTION 2429Z ET MSU TCF REVOLUTION 4R  
FTF ROSALINDA 568C JR MISS RIGHT 950J  
FTF TOUCH OF CLASS 856U FTF CLASS ACT 618S  
FTF LEANNA 630S

CED	BW	WW	YW	SC	SCF	Milk	MCE	M&G	FAT	REA	Marb
9.1	0.2	60	97	1.2	17.3	28	58	4.9	.053	0.53	0.01

945G is a standout Frontier female with the added maternal power of the notable 950 and 366 cow families. Retaining ½ embryo interest.

**LOT 69 FTF MS FRONTIER 926G**  
P44001613 1/15/2019

TH 403A 475Z PIONEER 358C ET TH 89T 755T STOCKMAN 475Z  
TH FRONTIER 174E TH 71U 17Y RITA 403A  
FTF TRUSTING LADY 312A NJW 73S M326 TRUST 100W ET  
FTF BOOM AND BLOOM 8211U

FTF VALUE ADDED 369A TH 122 71I VICOTR 719T  
FTF VALENTINE 578C FTF FABULOUS 181Y  
FTF N344 MS REV 2403Z ET MSU TCF REVOLUTION 4R  
KCF MISS 3008 N344

CED	BW	WW	YW	SC	SCF	Milk	M&G	MCE	FAT	REA	Marb
1.6	3.3	74	121	1.1	18.3	28	65	0.2	.043	0.50	-.04

926G growthy and attractive Frontier female with a tremendous set of EPD's. Check out her spread from WW to YW.

**LOT 70 FTF MS FRONTIER 907G**  
P44001566 01/10/2019

TH 403A 475Z PIONEER 358C ET TH 89T 755T STOCKMAN 475Z  
TH FRONTIER 174E TH 71U 17Y RITA 403A  
FTF TRUSTING LADY 312A NJW 73S M326 TRUST 100W ET  
FTF BOOM AND BLOOM 8211U

C&L CT FEDERAL 485T 6Y KJ HVH 33N REDEEM 485T ET  
FTF FEDERAL MISS 654D C&L MISS JUNIOR 408 1T  
FTF CHICK A BOOM 874U FTF BOMBARDIER 309N  
FTF ELENA 048K

CED	BW	WW	YW	SC	SCF	Milk	M&G	MCE	FAT	REA	Marb
3.0	2.4	61	107	1.0	15.0	20	51	0.1	.063	0.37	-.08

907G is a deep bodied, feminine Frontier heifer. Her grandmother is still in production at 12 years of age.

**LOT 71 FTF MS FRONTIER 957G**  
P44001671 01/23/2019

TH 403A 475Z PIONEER 358C ET TH 89T 755T STOCKMAN 475Z  
TH FRONTIER 174E TH 71U 17Y RITA 403A  
FTF TRUSTING LADY 312A NJW 73S M326 TRUST 100W ET  
FTF BOOM AND BLOOM 8211U

FTF REVOLUTION 126Y MSU TCF REVOLUTION 4R  
FTF SWEET REVOLUTION 6224D FTF BON BON 526R  
FTF CLASSIC MISS 0217X FTF CLASS ACT 629S  
FTF TRENA 537R

CED	BW	WW	YW	SC	SCF	Milk	M&G	MCE	FAT	REA	Marb
6.1	1.3	61	104	1.1	16.8	26	57	3.3	.053	0.56	0.01

957G offers calving ease, style, and performance as a Frontier daughter. She ratioed 104 for WW.

**LOT 72 FTF TONYA 9206G**  
P44001583 12/16/2018

SHF YORK 19H Y02 MSU MF HUDSON 19H  
HUTH FTF TORQUE C002 LOEWEN MISS P20 10W  
HUTH T013 DOMINETTE Z016 UPS DOMINO 3027  
HUTH R007 VERA T013

FTF BOOMER 29F 551R CS BOOMER 29F  
FTF BOOM AND BLOOM 274Z FTF MISS RIGHT 031K  
FTF TRINA 728T BKR TRIPLE PLUS 73C 20L  
FTF CHICK A BOOM 574R

CED	BW	WW	YW	SC	SCF	Milk	M&G	MCE	FAT	REA	Marb
6.4	2.8	63	95	0.9	19.3	22	54	3.3	.063	0.43	-.02

This big ribbed Torque daughter descends from the 154 cow family that is so consistent.



## SPRING HEIFERS

### FTF SWEET REVOLUTION 489B

P43489323 02/13/2014

#### Dam of Lot 73



### LOT 73

### FTF TONYA 946G

P44001661 01/20/2019

SHF YORK 19H Y02  
HUTH FTF TORQUE C002  
HUTH T013 DOMINETTE Z016

MSU MF HUDSON 19H  
LOEWEN MISS P20 10W  
UPS DOMINO 3027  
HUTH R007 VERA T013

FTF REVOLUTION 126Y  
FTF SWEET REVOLUTION 489B  
FTF CLASSY LADY 624S

MSU TCF REVOLUTION 4R  
FTF BON BON 526R  
DR WORLD CLASS 517 10H  
FTF CANDACE 139L

CED	BW	WW	YW	SC	SCF	Milk	M&G	MCE	FAT	REA	Marb
9.9	1.1	62	93	1.1	21.9	22	53	4.6	.073	0.37	0.04

This Torque female is easy to find, she's dark red, pigmented, and big hipped.

### LOT 74

### FTF PEARL 995G {DLF, HYF, IEF, MSUDF}

P44001707 03/01/2019

FTF PORTERHOUSE 455B  
FTF POWERHOUSE 6623D ET  
FTF TRENA 366N

FTF PROSPECTOR 145Y  
FTF VERONICA 227Z  
4K TRENT G605 L32  
FTF MISS RIGHT 122L

FTF REVOLUTION 126Y  
FTF SWEET REVOLUTION 7427E  
FTF CLASSY LADY 803U

MSU TCF REVOLUTION 4r  
FTF BON BON 526R  
DR WORLD CLASS 517 10H  
FTF CHICK A BOOM 559R

### LOT 75

### FTF NEW MOON 979G {DLF, HYF, IEF, MSUDF}

P44001691 02/06/2019

FTF NET MERIT 444B  
FTF NET MERIT 735E  
FTF MS B&B 249Z

TH 223 71I VICTOR 755T  
FTF CLASSIC MISS 868U  
MSU TCF REVOLUTION 4R  
FTF BOOM AND BLOOM 064X

FTF PRIME PRODUCT 226Z  
FTF PRIMETIME MISS 701E  
FTF MS PROSPECTOR 520C

SHF RIB EYE M326 R117  
FTF CLASSIC MISS 0206X  
FTF PRIME PRODUCT 226Z  
FTF MS REVOLUTION 2312Z



CED	BW	WW	YW	SC	SCF	Milk	M&G	MCE	FAT	REA	Marb
3.9	2.5	53	87	1.0	18.3	30	56	5.4	.033	0.63	-.10

This March Powerhouse 6623 daughter should be maternal made, combining Prospector, 719T, Revolution, and World Class.



CED	BW	WW	YW	SC	SCF	Milk	M&G	MCE	FAT	REA	Marb
5.5	1.2	61	88	1.1	21.3	30	60	3.7	.023	0.52	0.06

A nicely made 735E daughter whose two year old mother is quite the calf raiser.

### LOT 76

### FTF PROMISE 9427G

P44001646 01/16/2019

FTF PROSPECTOR 145Y  
FTF PORTERHOUSE 455B  
FTF VERONICA 227Z

HUTH PROSPECTOR K085  
FTF CHICK A BOOM 7227T  
TH 122 71I VICTOR 719T  
FTF FABULOUS 097X

FTF RIB EYE 153Y  
FTF WHATS COOKIN? 490B  
FTF MISS REVOLUTION 172Y

SHF RIB EYE M326 R117  
FTF GARDEN PRINCESS 903W  
MSU TCF REVOLUTION 4R  
FTF CLASSIC MISS 868U

CED	BW	WW	YW	SC	SCF	Milk	M&G	MCE	FAT	REA	Marb
3.6	2.2	58	99	1.2	20.9	27	57	4.9	.033	0.23	0.13

9427G is a beautiful female from the same cow family as FTF Net Merit 444B.

### LOT 77

### FTF CONNIE 972G {DLF, HYF, IEF, MSUDF}

P44001684 01/30/2019

FTF PROSPECTOR 145Y  
FTF CONFIDENCE 6113D  
FTF VERONICA 4107B

HUTH PROSPECTOR K085  
FTF CHICK A BOOM 7227T  
TH 122 71I VICTOR 719T  
FTF MS REVOLUTION 2424Z

FTF PRIME PRODUCT 226Z  
FTF PRIMETIME MISS 617D  
FTF MS REVOLUTION 4210B

SHF RIB EYE M326 R117  
FTF CLASSIC MISS 0206X  
MSU TCF REVOLUTION 4R  
FTF TESSIE 422P



CED	BW	WW	YW	SC	SCF	Milk	M&G	MCE	FAT	REA	Marb
4.3	1.7	68	103	1.7	19.7	33	67	3.7	.043	0.66	0.26

972G is a growthy female that is loaded with performance and eye appeal. This is the first Confidence daughter to sell.



## SPRING HEIFERS

### FTF MS REVOLUTION 401B

P43489185 01/08/2014

#### Maternal Sister to Lot 78



### LOT 78

### FTF PRIMETIME MISS 9217G

P44001595 01/04/2019

SHF RIB EYE M326 R117  
FTF PRIME PRODUCT 226Z  
FTF CLASSIC MISS 0206X

KCF BENNETT 3008 M326  
HVH MISS HUDSON 83K 8M  
FTF CLASS ACT 629S  
FTF ENYA 303N

SHF RIB EYE M326 R117  
FTF MS RIBEYE 931W  
FTF LEXIE 703T

KCF BENNETT 3008 M326  
HVH MISS HUDSON 83K 8M  
FELTONS LEGEND 242  
FTF LEANNA 557R

CED	BW	WW	YW	SC	SCF	Milk	M&G	MCE	FAT	REA	Marb
7.9	0.3	53	79	1.3	24.9	30	56	5.0	.003	0.43	0.33

This well built female comes from the 931 cow who has produced so many good cattle over the years. She is the dam of the all time high selling bred heifer at the Missouri Opportunity Sale several years ago.

### LOT 79

### FTF PRIMETIME MISS 9221G

P44001600 01/10/2019

SHF RIB EYE M326 R117  
FTF PRIME PRODUCT 226Z  
FTF CLASSIC MISS 0206X

KCF BENNETT 3008 M326  
HVH MISS HUDSON 83K 8M  
FTF CLASS ACT 629S  
FTF ENYA 303N

TH 122 71I VICTOR 719T  
FTF TORI 352A  
FTF MISS REVOLUTION 102Y

DRF JWR PRINCE VICTOR 719T  
KBCR 19D DOMINETTE 122  
MSU TCF REVOLUTION 4r  
FTF TOUCH OF CLASS 875U

CED	BW	WW	YW	SC	SCF	Milk	M&G	MCE	FAT	REA	Marb
7.9	0.4	54	87	1.6	24	31	58	5.9	-.007	0.55	0.21

Another Prime Product female that should be an efficient calf raising machine with her powerful pedigree.

### LOT 80

### FTF SELECT MISS 964G {DLF, HYF, IEF, MSUDF}

P44001676 01/27/2019

EFBEEF FOREMOST U208  
SCHU-LAR SELECTION 16C  
SCHU-LAR 913 OF 208 M326 ET

FELTONS SOUNDER 957  
EF BEEF G824 KATE S610 ET  
KCF BENNETT 3008 M326  
SCHU-LAR 208 OF 1H 121 ET

FTF PORTERHOUSE 455B  
FTF PROMISE 673D  
FTF CLASSY LADY 313A

FTF PROSPECTOR 145Y  
FTF VERONICA 227Z  
DR WORLD CLASS 517 10H  
OVF PRETTY MISS 702T



CED	BW	WW	YW	SC	SCF	Milk	M&G	MCE	FAT	REA	Marb
11.6	-0.5	50	83	1.1	20.5	27	52	10.5	.053	0.04	0.38

This heifer comes from the same cow family as FTF Relevant 831F. Her sire was highly recommended by Bryce Schumann and we sampled him last year. She should make a front pasture female.

### FTF CLASSIC MISS 0206X {DLF, HYF, IEF}

P43074925 12/20/2009

#### Granddam of Lots 78 & 79



### LOT 81 A B C

### 3 OPEN COMMERCIAL BALDIES

**81A** - Ear tag # 9502.

Black Baldy, FTF Prime Product 226Z x Commercial Angus cow.  
Born 3/3/19, 73 lb bw.

**81B** - Ear tag # 9101.

Black Baldy, FTF Net Merit 735E x Commercial Angus cow.  
Born 3/22/19, 64 lb bw.

**81C** - Ear tag # 9436.

Red baldy, FTF Humdinger 4303B x Registered Angus cow.  
Born 1/20/19, 710 lb bw.



# PROGRESSIVE CATTLEMEN

CHOOSE VITAFERM® CONCEPT•AID®

- INCREASE CONCEPTION RATES
- TIGHTEN CALVING INTERVALS
- HAVE MORE LIVE CALVES



Reduce your risk in 2020 by investing in the VitaFerm® Concept•Aid® mineral program to maximize your reproductive efficiency. You can trust the VitaFerm® advantage to deliver more energy for reproductive success while elevated vitamin E levels lend to faster reproductive tract repair and quicker breed back to shorten your calving window, helping to maximize your efforts.

Order by the pallet and have it delivered to you  
or pick up from Falling Timber Farm or one of our Dealer Team locations.

**Dealer Team:**

- |  |  |
|--|--|
| 1. Derek Ridder, Bay, MO 573-680-4692              | 5. Travis McConaughy, Wasola, MO 417-989-0486          |
| 2. Allen Williman, Big Spring, MO 573-619-1193     | 6. Chris Schieffer, Troy, MO 636-262-8185              |
| 3. Blake Voss, Beaufort, MO 573-368-9001           | 7. Ryan & Kesha Nichols, Robertsville, MO 316-650-4611 |
| 4. Christopher Hudson, Middletown, MO 573-647-1534 | 8. Bryan Wyss, Vienna, MO 573-291-8152                 |
|  | 9. Russell Coon, Bethal, MO 660-341-2705               |

**VITAFERM** PERFORMANCE THAT PAYS

**BioZyme**  
INCORPORATED



## REFERENCE SIRES

### EF BEEF B413 PRIMESTOCK 3007 ET {DLF, HYF, IEF, MSUDF}

P43772308 02/21/2017



- Primestock is an outcross sire we purchased from Ellis Farms last year.
- His first calves at Ellis Farms are yearlings and quite impressive.
- He is a maternal brother to Tested A250 and CEO.
- Look for his progeny in our 2021 sale.
- Owned with Ellis Farms, Chrisman, IL.

CED	BW	WW	YW	SC	SCF	Milk	M&G	MCE	FAT	REA	Marb
5.8	2.9	71	110	2.0	18.6	26	62	2.4	.063	0.51	0.94



EFBEEF TFL U208 TESTED X651 ET EF BEEF FOREMOST U208  
 EFBEEF BR VALIDATED B413 EFBEEF P606 MABEL R415  
 EFBEEF 4R THYRA Y865 MSU TCF REVOLUTION 4R  
 EFBEEF N014 THYRA S645

R&R PRIME CUT 6378 ET FELTONS 517  
 EF BEEF 6378 KATE W484 FELTONS KATE P62  
 EFBEEF G825 KATE R428 EF 821C FELLIS G825  
 FELTONS KATE P38

### FTF TESTIMONY 828F {DLF, HYF, IEF}

P43911635 01/16/2018



- This bull's performance is a testimony to the 13 generations of FTF breeding behind him.
- Testimony sends all traits in the right direction with style and balance.
- He was one of the highlights of our 2019 sale.
- Semen available, \$25/straw, \$50/certificate.
- Owned with Bourbeuse Bend Herefords, Beaufort, MO.

CED	BW	WW	YW	SC	SCF	Milk	M&G	MCE	FAT	REA	Marb
8.4	1.6	72	117	1.0	23.0	30	66	5.4	.053	0.93	0.50



EFBEEF FOREMOST U208  
 EFBEEF TFL U208 TESTED X651 ET  
 EFBEEF P606 MABEL R415

FELTONS SOUNDER 957  
 EFBEEF G824 KATE S610 ET  
 EF SCHU-LAR N106 OF 009K 434V  
 EF G824 MABEL N174

FTF PRIME PRODUCT 226Z  
 FTF PRIMETIME MISS 608D  
 FTF MS REVOLUTION 424B

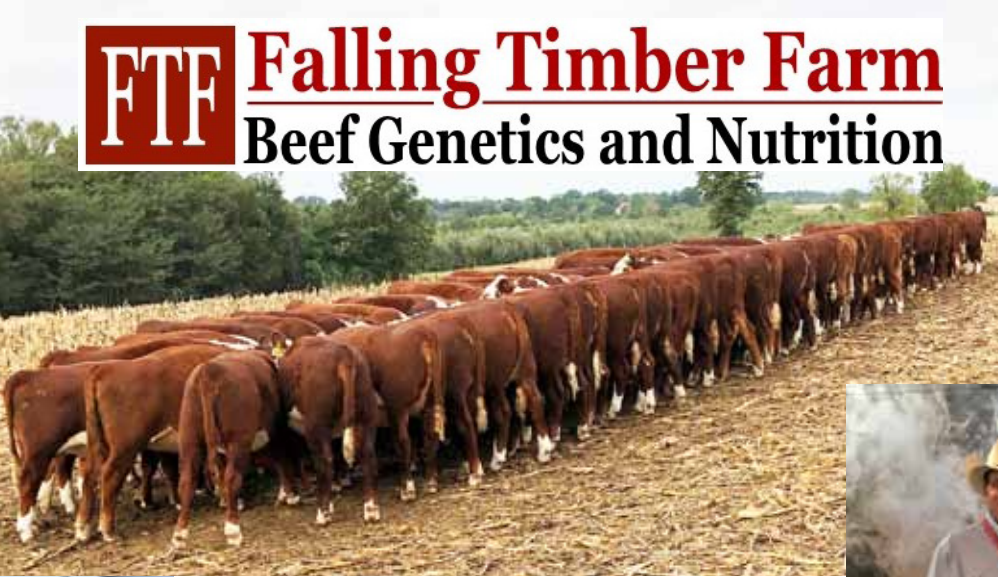
SHF RIB EYE M326 R117  
 FTF CLASSIC MISS 0206X  
 MSU TCF REVOLUTION 4R  
 FTF TRINA 926W





# FTF **Falling Timber Farm**

## Beef Genetics and Nutrition



**Ben Ridder wins Champion Steer  
in National Junior Hereford Assoc.  
Fed Steer Shootout Contest**



**Lot 11 - FTF FORCE 956G**

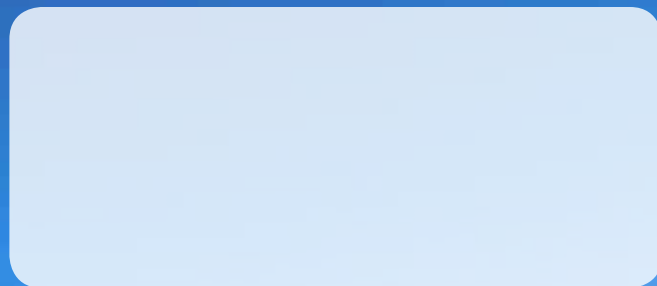






Falling Timber Farm  
16789 Ridder Road  
Marthasville, MO 63357

**FTF Valentine 572C - Sells as Lot 43**



**FTF Goldmine 929G - Sells as Lot 2**



**FTF Powerhouse 9412G - Sells as Lot 18**



[www.fallingtimmerfarm.com](http://www.fallingtimmerfarm.com)