



Falling Timber Farm

17th Annual Bull & Female Sale
Saturday, March 21st, 2026
Live Auction 5:30 pm at the farm

**Proudly
Celebrating**

1976



2026

**in the Registered
Hereford business**



SELLING 40 BULLS AND 60 FEMALES

Top Cut Yearling Hereford Bulls with Genomic Enhanced EPD's

Fall Bred & Yearling Hereford Heifers

Bred Cows & Cow Calf Pairs • Baldy Heifers

www.fallingtimberfarm.com



Dear fellow cattle producers,

Welcome to our 17th Annual Bull and Female Sale. Our Hereford cattle represent 50 years of genetic selection and over 10 generations of selective breeding. The founding principles of modest birthweights, female quality, temperament, growth and carcass quality are what FTF strives to produce. We are proud to have created cattle that work well in the real world, and our business thrives because of our satisfied customers. We believe that the cattle in this sale provide a solid foundation for any herd. They are an investment that your kids and grandkids will be happy with and proud of for many years.

We are once again offering the highest cut of Hereford yearling bulls that are fed for optimum gain, not maximum gain. By doing this we have realized many benefits including better feet and less fat thickness. This improves a bulls ability to cover cows without heating up in the spring and gives them the opportunity to grow on green grass during their first breeding season. These bulls are an excellent choice for the commercial cattlemen. They will make baldy females with easy calving, performance, teat and udder quality, and have slick hair coats suited for fescue. These bulls have the potential to make a big impact on the breed for future generations of cattle.

Once again, we will have a select number of pairs of bulls that we will video together and sell choice with the customer having the opportunity to buy both. We will group the most genetically and phenotypically similar bulls. We have seen the benefit that customers have when purchasing pairs of bulls that have been raised together and their ability to get the maximum number of females bred in a short amount of time.

The females are of consistent FTF quality and the spring pairs are very special. The open and fall bred heifers are a solid group to choose from as well.

We are retaining ½ semen interest in several of the bulls as well as ½ embryo interest in some of the females. We will only collect bulls and flush females if that is also the desire of the buyer. Much genetic progress has been made with genomic testing and research. We are committed to improving and building on these principles of herd development in the future.

When you purchase a bull on our sale, the price you pay includes feed and yardage until April 11th. You are buying a bull that is ready for spring service and spring grass. The sale will be broadcasted by DVAuction.com. It is a great option if you are unable to attend. The meal will be served prior to the sale. I'd like to extend a big thank you to Vita Ferm for helping sponsor the food.

We are extremely grateful for your business. We appreciate each and every customer, worker, viewer, bidder, and buyer in attendance or online. As always, we are here to assist you in any way possible to help you achieve your goals. We look forward to seeing you on March 21st.

Sincerely,

John Ridder

Glenn and Yvonne Ridder; John, Heidi, Madi and Ben Ridder
www.fallingtimberfarm.com

Falling Timber Farm

17th Annual Bull & Female

Saturday March 21st, 2026 16789 Ridder Rd, Marthasville, MO 63357

DIRECTIONS

From Warrenton: Take Hwy 47 south 13.9 miles from the Main Street stoplight. Turn right on Ridder Rd.
From Washington: Take Hwy 47 north 8.9 miles from the 5th Street stoplight. Turn left on Ridder Rd.

ACCOMMODATIONS

Marthasville: Katy Haus or Bank Haus - missourihaus.com
Warrenton: Holiday Inn Express 636-456-2220
 Baymont Inn & Suites 636-456-6000
Washington: Super 8 636-390-0088
 Best Western Plus 636-390-8877
 Old Dutch Hotel 636-390-4400
 River Sirens 636-900-9313

SALE DAY PHONES

John Ridder.....636-358-4161
 Glenn Ridder.....636-284-0602
 Heidi Ridder.....636-358-4020
 Office.....636-433-4701

SCHEDULE

Cattle available for viewing starting at 2:00 pm.
 Live auction begins at 5:30 pm.
 Food served before the sale, sponsored by VitaFerm

COOPERATOR HERDS

John Fischer Family Farm, Washington, MO
 Venison Valley Cattle Ranch, Hermann, MO
 Scratcher's Branch Ranch, Montgomery City, MO

ACKNOWLEDGEMENTS

Dr. Spencer Thompson, DVM
 Russell Coon, Ultrasound Technician
 Austin Brandt, American Hereford Association
 Mike Jordan, President MO Hereford Association
 Riley Bradshaw, Vice-Pres. MO Hereford Association
 Larry Day, MO Hereford Assn. Secretary/Treasurer
 Jesse Bolin, Auctioneer
 Don Birk, Photography
 Dusk to Dawn Marketing, Videos
 Joe Rickabough, Special Assignment

SALE REPRESENTATIVES

Steve Swanson.....573-694-2697
 Wes Tiemann.....816-244-4462
 Don Birk.....417-860-8595
 Jim Reed.....660-527-3507
 BEEF-360.....Keenan...660-734-0510
 BEEF-360.....Jerry...214-726-2759
 Bryan Wyss.....573-291-8152
 Bryan Pollard.....636-359-8129

RETAINING SEMEN & EMBRYO INTEREST

We are retaining 1/2 semen interest in several of the bulls as well as 1/2 embryo interest in some of the females. Collection or flushes are not required, but can occur if we both choose to do so with expenses and revenue split 50/50.

PICK UP OR DELIVERY

We offer free bull delivery within 100 miles for this sale. We will work with you if you are further away. You may pick up your own bull(s). We will care for your bulls until April 11th with no extra charge. Females should be picked up sale day or make arrangements with John.

Hereford Breed Average EPD's for 2024

	CED	BW	WW	YW	SC	SCF	MILK	M&G	CEM	Uddr	Teat	Fat	REA	Marb	CHB\$
EPD	3.7	2.5	57	90	1.1	17.4	27	55	1.6	1.27	1.29	0.023	0.48	0.15	125

denotes animals in the top 25th percentile

GUARANTEE

Bulls have passed semen test on 3/4/26 by Dr Spencer Thompson. Bulls are performance tested and ultrasounded. Hereford bulls are DNA tested for genetic defects. We offer the standard American Hereford Association breeding guarantee. Bred females will be pregnancy tested on 3/4/26 by Dr. Spencer Thompson. We will guarantee them to maintain pregnancy for 45 days after the sale. We encourage them to be preg checked again at this time and adjustments can be made. Loss of pregnancy after this time is likely due to environmental factors and can not be guaranteed.

**Visit www.DVAuction.com
and Register Today!**



For General Questions Please Contact Our Office:
 (402) 316-5460 or support@dvauction.com



Predictable Performance Genetics



CE	BW	WW	YW	SC	SCF	Milk	M&G	UDDR	TEAT	REA	MARB
5.0	1.5	74	119	1.9	16.3	31	68	1.4	1.4	0.72	0.05

Prototype is the model of what many breeders (including us) would consider to be as near perfect of a design to a modern Hereford bull as we have ever seen. Designed from the ground up with perfect feet and legs. His structure, depth, length, and muscle pattern come together with power and presence. He descends from the same cow family that produced FTF Relevant 831F and he combines two of the best female makers with Frontier and World Class 10H. In the future we see Prototype as a bull we would like to use heavily AI to produce the cattle that will compliment so many lines in the breeding program. Homozygous polled. Retaining 1/2 semen interest Top 25% BW, 4% WW, 5% YW, 2% SC, 9% MG, 10% UDDR, 14% TEAT, 23% CW, 16% REA.

lot 1

FTF PROTOTYPE 502N
 (DLF, HYF, IEF, MSUDF, MDF, DBF) P44646250 01/09/2025

H B DISTINCT
 HUTH CLC WF DELUXE K016
 HUTH F035 MANDY H029

TH FRONTIER 174E
 FTF MS FRONTIER 0421H
 FTF CLASSY LADY 134Y

NJW 160B 028X HISTORIC 81E ET
 H DS MISS SPICE 8082
 /S MANDATE 66589 ET
 HUTH 2024 MS EXEDE F035

TH 403A 475Z PIONEER 358C ET
 FTF TRUSTING LADY 312A
 DR WORLD CLASS 517 10H
 OVF PRETTY MISS 702T



Act BW	Adj WW	Adj YW	IMF ratio	Adj REA	Adj FAT						
78	756	1149	99	13.25	0.35						
CED	BW	WW	YW	SC	SCF	Milk	M&G	Uddr	Teat	REA	Marb
5.0	1.5	74	119	1.9	16.3	31	68	1.40	1.40	0.72	0.05



FTF PROTOTYPE 502N
Lot 1



FTF MS FRONTIER 910G
Half Sister to Dam of Lot 1



FTF MS FRONTIER 0421H
Dam of Lot 1



Predictable Performance Genetics

HUTH CLC WF DELUXE K016 (DLF, HYF, IEF, MSUDF, MDF, DBF)

P44370488 04/24/2022



Sire of Lots 1 - 6



lot 2
FTF DELUXE 505N
 {DLF, HYF, IEF, MSUDF, MDF, DBF} P44646253 01/11/2025

H B DISTINCT NJW 160B 028X HISTORIC 81E ET
 HUTH CLC WF DELUXE K016 H DS MISS SPICE 8082
 HUTH F035 MANDY H029 /S MANDATE 66589 ET
 HUTH Z024 MS EXEDE F035
 TH FRONTIER 174E TH 403A 475Z PIONEER 358C ET
 FTF MS FRONTIER 1203J FTF TRUSTING LADY 312A
 FTF MS REVOLUTION 4320B MSU TCF REVOLUTION 4R
 FTF CLASSIC BEAUTY 907W



Act BW		Adj WW		Adj YW		IMF ratio		Adj REA		Adj FAT	
75		781		1243		123		12.68		0.46	
CED	BW	WW	YW	SC	SCF	Milk	M&G	Uddr	Teat	REA	Marb
9.1	1.3	82	124	1.7	18.3	33	74	1.40	1.40	0.80	0.00

505N is high performing, straight topped, and very deep bodied. Very similar genetically and by design to Lot 1. His dam is one of our favorite Frontier daughters.

Homozygous polled

Top 13% CE, 22% BW, 1% WW, 2% YW, 3% SC, 21% MM, 2% MG, 10% UDDR, 14% TEAT, 8% CW, 11% REA.

SHOW ME SELECT QUALIFIED



lot 3
FTF DELUXE 507N
 {DLF, HYF, IEF, MSUDF, MDF, DBF} P44646255 01/12/2025

H B DISTINCT NJW 160B 028X HISTORIC 81E ET
 HUTH CLC WF DELUXE K016 H DS MISS SPICE 8082
 HUTH F035 MANDY H029 /S MANDATE 66589 ET
 HUTH Z024 MS EXEDE
 TH FRONTIER 174E TH 403A 475Z PIONEER 358C ET
 FTF MISS FRONTIER 0218H FTF TRUSTING LADY 312A
 FTF GINGER 396A FTF GARRETT 020X
 FTF MISS REVOLUTION 172Y



Act BW		Adj WW		Adj YW		IMF ratio		Adj REA		Adj FAT	
68		728		1117		97		14.29		0.48	
CED	BW	WW	YW	SC	SCF	Milk	M&G	Uddr	Teat	REA	Marb
12.9	-1.8	65	98	1.5	21.4	32	65	1.40	1.40	0.70	0.18

Lots of calving ease and maternal in this Deluxe bull that is a ¼ brother to Lots 1 and 2.

Homozygous polled.

Top 4% CE, 3% BW, 20% WW, 11% SCF, 14% SCF, 21% MM, 18% MG, 10% UDDR, 14% TEAT, 16% REA, 23% BMI, 22% BII.

SHOW ME SELECT QUALIFIED



lot 4

MR DELUXE 5207N
 {DLF,HYF,IEF,MSUDF,MDF,DBF} P44646285 12/17/2024

H B DISTINCT
 HUTH CLC WF DELUXE K016
 HUTH F035 MANDY H029

FTF PORTERHOUSE 455B
 FTF PROMISE 7444E
 FTF MS REVOLUTION 3437A

NJW 160B 028X HISTORIC 81E ET
 H DS MISS SPICE 8082
 /S MANDATE 66589 ET
 HUTH Z024 MS EXEDE F035

FTF PROSPECTOR 145Y
 FTF VERONICA 227Z
 MSU TCF REVOLUTION 4R
 FTF CLASSY LADY 0352X



Act BW	Adj WW	Adj YW	IMF ratio	Adj REA	Adj FAT						
95	778	1219	96	16.20	0.23						
CED	BW	WW	YW	SC	SCF	Milk	M&G	Uddr	Teat	REA	Marb
7.7	1.4	85	137	2.3	22.0	33	76	1.40	1.50	1.09	0.18

5207 is a calving ease bull with extra performance, great structure and loads of pigment. His dam has been one of Madi's top cows over the years.

Owned by Madi Ridder. Retaining 1/2 semen interest

Top 19% CE, 25% BW, 1% WW, 1% YW, 1% SC, 12% SCF, 17% MM, 1% MG, 12% MCE, 10% UDDR, 4% TEAT, 1% CW, 1% REA, 6% BMI, 5% BII, 8% CHB. SHOW ME SELECT QUALIFIED



lot 5

FTF DELUXE 5211N
 {DLF,HYF,IEF,MSUDF,MDF,DBF} P44646290 12/20/2024

H B DISTINCT
 HUTH CLC WF DELUXE K016
 HUTH F035 MANDY H029

FTF POWERHOUSE 6615D ET
 FTF PEACH 967G
 FTF MIRANDA 737E

NJW 160B 028X HISTORIC 81E ET
 H DS MISS SPICE 8082
 /S MANDATE 66589 ET
 HUTH Z024 MS EXEDE F035

FTF PORTERHOUSE 455B
 FTF TRENA 366N
 FTF NET MERIT 444B
 FTF MS PROSPECT 376A



Act BW	Adj WW	Adj YW	IMF ratio	Adj REA	Adj FAT						
92	732	1170	133	12.94	0.33						
CED	BW	WW	YW	SC	SCF	Milk	M&G	Uddr	Teat	REA	Marb
6.9	1.1	74	111	0.9	24.2	25	61	1.50	1.50	0.71	0.12

5211 is another high quality Deluxe bull with all the essentials including ce, growth, and maternal traits.

Heterozygous polled. Lightly scurred

Top 22% CE, 19% BW, 4% WW, 10% YW, 6% SCF, 2% UDDR, 4% TEAT, 21 CW, 17% REA, 8% BMI, 7% BII
 SHOW ME SELECT QUALIFIED



lot 6

FTF DELUXE 5202N
 {DLF,HYF,IEF,MSUDF,MDF,DBF} P44646280 12/14/2024

H B DISTINCT
 HUTH CLC WF DELUXE K016
 HUTH F035 MANDY H029

FTF PORTERHOUSE 455B
 FTF PROMISE 9211G
 FTF SONNET 012X

NJW 160B 028X HISTORIC 81E ET
 H DS MISS SPICE 8082
 /S MANDATE 66589 ET
 HUTH Z024 MS EXEDE F035

FTF PROSPECTOR 145Y
 FTF VERONICA 227Z
 GRANDVIEW 7OAKS SONORA 145R
 FTF LEANNA 454P



Act BW	Adj WW	Adj YW	IMF ratio	Adj REA	Adj FAT						
88	643	1039	85	11.15	0.24						
CED	BW	WW	YW	SC	SCF	Milk	M&G	Uddr	Teat	REA	Marb
8.3	0.4	67	107	1.4	18.3	36	69	1.40	1.30	0.59	0.16

This 3/4 brother to Lot 4 is similar in type and kind. His Dam keeps producing the good ones year after year.

Homozygous polled

Top 15% CE, 12% BW, 14% WW, 14% YW, 17% SC, 7% MM, 6% MG, 10% UDDR
 CHB SHOW ME SELECT QUALIFIED





CE BW WW YW SC SCF Milk M&G UDDR TEAT REA MARB
 8.5 1.6 65 105 0.8 26.8 34 67 1.3 1.4 0.69 0.30

With an original blend of Red Man, Porterhouse, and Tested, America's Best is a unique individual that really satisfies. Goggle eyed and loaded with muscle he offers all the essential traits including calving ease, growth maternal and carcass.

Retaining 1/2 semen interest. Homozygous polled. Top 12% CE, 23% WW, 18% YW, 2% SCF, 10% MM, 9% MG, 14% TEAT, 9% CW, 16% REA, 22% MARB, 2% BMI, 2% BII, 14% CHB.

SHOW ME SELECT QUALIFIED

lot 7 **FTF AMERICA'S BEST 565N**
 (DLF, HYF, IEF, MSUDF, MDF, DBF) P44646346 01/20/2025

NJW 79Z Z311 ENDURE 173D ET KCF BENNETT ENCORE Z311 ET
 ASM 405B RED MAN 325L ET BW 91H 100W RITA 79Z ET
 ASM 705 10Y MISS MALLORY 405B NJW 73S W18 HOMETOWN 10Y ET
 ASM 122L MISS 705ET
 FTF PRAGMATIC 9721G FTF POWERHOUSE 6457D
 FTF POPPY 2101K FTF PROMISE 6346D
 FTF TESS 9423G ET EFBEEF TFL U208 TESTED X651 ET
 FTF VERONICA 227Z



Act BW	Adj WW	Adj YW	IMF ratio	Adj REA	Adj FAT						
82	710	1178	92	14.21	0.29						
CED	BW	WW	YW	SC	SCF	Milk	M&G	Uddr	Teat	REA	Marb
8.5	1.6	65	105	0.8	26.8	34	67	1.30	1.40	0.69	0.30



FTF POPPY 2101K
 Dam of Lot 7





lot 8 **FTF CHIEF 552N**
 {DLF,HYF,IEF,MSUDF,MDF,DBF} P44646335 01/18/2025

NJW 79Z Z311 ENDURE 173D ET KCF BENNETT ENCORE Z311 ET
 ASM 405B RED MAN 325L ET BW 91H 100W RITA 79Z ET
 ASM 705 10Y MISS MALLORY 405B NJW 73S W18 HOMETOWN 10Y ET
 ASM 122L MISS 705ET

FTF PRIME PRODUCT 513C FTF PRIME PRODUCT 226Z
 FTF MISS PROFIT 0205H FTF MS CLASSIC 241Z
 FTF MS REVOLUTION 457B MSU TCF REVOLUTION 4R
 FTF CLASSY LADY 171Y



Act BW	Adj WW	Adj YW	IMF ratio	Adj REA	Adj FAT						
82	703	1099	94	11.08	0.18						
CED	BW	WW	YW	SC	SCF	Milk	M&G	Uddr	Teat	REA	Marb
10	0.5	64	103	1.4	23.9	31	63	1.40	1.40	0.69	0.31

Chief is dark cherry red, heavily pigmented, and is backed by 4 maternal Dam's of Distinction in a row. He has an exceptional EPD and index profile. His dam has an amazing udder and he should be a great breeding bull. Maternal brother to FTF Auggie 209K is owned by Shoenburger Polled Hereford's, Aurora, MO. Retaining 1/2 semen interest. Homozygous polled.

Top 9% CE, 13% BW, 23% WW, 22% YW, 17% SC, 7% SCF, 21% MG, 15% MCE, 10% UDDR, 14% TEAT, 4% CW, 20% REA, 16% MARB, 4% BMI, 4% BII, 4% CHB. SHOW ME SELECT QUALIFIED



lot 9 **FTF RED MAN 569N**
 {DLF,HYF,IEF,MSUDF,MDF,DBF} P44646350 01/21/2025

NJW 79Z Z311 ENDURE 173D ET KCF BENNETT ENCORE Z311 ET
 ASM 405B RED MAN 325L ET BW 91H 100W RITA 79Z ET
 ASM 705 10Y MISS MALLORY 405B NJW 73S W18 HOMETOWN 10Y ET
 ASM 122L MISS 705ET

FTF CONFIDENCE 6113D FTF PROSPECTOR 145Y
 FTF CONNIE 083H FTF VERONICA 4107B
 FTF TESS 805E EFBEF TFL U208 TESTED X651 ET
 FTF MS REVOLUTION 650D



Act BW	Adj WW	Adj YW	IMF ratio	Adj REA	Adj FAT						
83	606	1084	91	11.83	0.26						
CED	BW	WW	YW	SC	SCF	Milk	M&G	Uddr	Teat	REA	Marb
8.5	0.7	63	103	1.2	25.8	29	60	1.30	1.40	0.41	0.39

569N is nearly identical in type and EPD profile to Lot 7 and 8. Red Man seems to stamp consistency. His dam is the mother of FTF Dallas 454M who sold to Frerking Farms in our 2025 sale. Lots of good in this bull.

Show Me Select qualified. Homozygous polled.

Top 12% CE, 15% BW, 22% YW, 3% SCF, 14% MCW, 14% TEAT, 17% UDDR, 17% CW, 11% MARB, 3% BMI, 3% BII, 12% CHB.

SHOW ME SELECT QUALIFIED



lot 10 **FTF RED MAN 554N**
 {DLF,HYF,IEF,MSUDF,MDF,DBF} P44646337 01/18/2025

NJW 79Z Z311 ENDURE 173D ET KCF BENNETT ENCORE Z311 ET
 ASM 405B RED MAN 325L ET BW 91H 100W RITA 79Z ET
 ASM 705 10Y MISS MALLORY 405B NJW 73S W18 HOMETOWN 10Y ET
 ASM 122L MISS 705ET

FTF TORQUE 937G HUTH FTF TORQUE C002
 FTF TORY 1106J FTF MS REVOLUTION 4320B
 FTF MS HOMELAND 933G KCF BENNETT HOMELAND C34
 FTF QUALITY QUEEN 7103E



Act BW	Adj WW	Adj YW	IMF ratio	Adj REA	Adj FAT						
72	581	1025	86	11.58	0.20						
CED	BW	WW	YW	SC	SCF	Milk	M&G	Uddr	Teat	REA	Marb
8.9	2.0	60	94	0.7	20.5	17	47	1.30	1.20	0.44	0.22

554N is a big bodied easy fleshing Red Man son that follows the pattern of type and kind. Solid cow family. Grandmother 933 is a Dam of Distinction.

Homozygous polled.

Top 10% CE, 21% SCF, 17% FAT, 25% BMI, 25% BII.

SHOW ME SELECT QUALIFIED



lot 12 **FTF EQUITY 531N**
 {DLF,HYF,IEF,MSUDF,MDF,DBF} P44646315 01/15/2025

JW 1857 MERIT 21134
 CHURCHILL EQUITY 3316L ET
 CHURCHILL LADY 023H ET

HUTH FTF TORQUE C002
 FTF TONYA 013H
 FTF LADY 757E

JW X651 TESTED 1857 ET
 JW 33Z VICTORIA 19027
 NJW 76S 27A LONG RANGE 203D ET
 JDH AH MERCEDES 11E ET

SHF YORK 19H Y02
 HUTH T013 DOMINETTE 2016
 FTF LOGIC 339A
 FTF LADY 591C



Act BW		Adj WW		Adj YW		IMF ratio		Adj REA		Adj FAT	
84		703		1168		113		12.04		0.42	
CED	BW	WW	YW	SC	SCF	Milk	M&G	Uddr	Teat	REA	Marb
0.2	1.8	69	114	2.1	16.1	34	68	1.20	1.20	0.67	0.07

531N is an extremely stout and high performing Equity son that is backed by the cow power of Torque and Logic.
 Homozygous polled.
 Top 12% WW, 8% YW, 1% SC, 17% MM, 8% MG, 15% CW.



lot 13 **FTF EQUITY 539N**
 {DLF,HYF,IEF,MSUDF,MDF,DBF} P44646323 01/16/2025

JW 1857 MERIT 21134
 CHURCHILL EQUITY 3316L ET
 CHURCHILL LADY 023H ET

FTF POWERHOUSE 6623D ET
 FTF PEARL 065F
 FTF MS PROSPECTOR 848F

JW X651 TESTED 1857 ET
 JW 33Z VICTORIA 19027
 NJW 76S 27A LONG RANGE 203D ET
 JDH AH MERCEDES 11E ET

FTF PORTERHOUSE 455B
 FTF TRENA 366N
 FTF PROSPECTOR 145Y
 FTF VALENTINE 589C



Act BW		Adj WW		Adj YW		IMF ratio		Adj REA		Adj FAT	
65		622		1100		89		12.65		0.24	
CED	BW	WW	YW	SC	SCF	Milk	M&G	Uddr	Teat	REA	Marb
13.7	-2.8	61	100	1.6	21.0	33	63	1.30	1.40	0.54	0.27

Big Time EPD spread and attractive phenotype on this Equity son. Pretty hard to find them with that much calving ease and still 100 YW EPD. Outstanding cow family and his grandam was selected in our 2023 sale by the Ryan Nichols family.
 Homozygous polled.
 Top 3% CE, 2% BW, 11% SC, 20 SCF%, 21% MM, 21% MG, 5% MCE, 14% TEAT, 25% MARB, 20% BMI, 20% BII.
 SHOW ME SELECT QUALIFIED



lot 14 **FTF EQUITY 546N**
 {DLF,HYF,IEF,MSUDF,MDF,DBF} P44646327 01/17/2025

JW 1857 MERIT 21134
 CHURCHILL EQUITY 3316L ET
 CHURCHILL LADY 023H ET

FTF CONFIDENCE 6113D
 FTF CONNIE 080H
 FTF TONYA 871F

JW X651 TESTED 1857 ET
 JW 33Z VICTORIA 19027
 NJW 76S 27A LONG RANGE 203D ET
 JDH AH MERCEDES 11E ET

FTF PROSPECTOR 145Y
 FTF VERONICA 4107B
 HUTH FTF TORQUE C002
 FTF MS PROSPECTOR 520C



Act BW		Adj WW		Adj YW		IMF ratio		Adj REA		Adj FAT	
80		758		1191		86		12.17		0.30	
CED	BW	WW	YW	SC	SCF	Milk	M&G	Uddr	Teat	REA	Marb
7.4	0.5	76	116	1.3	18.7	24	62	1.20	1.30	0.49	0.18

Backed by a beautiful Confidence mother, 546N is stout, well marked and offers so much. Lots of growth and performance on this calving ease and maternal bull.
 Homozygous polled.
 Top 19% CE, 12% BW, 3% WW, 6% YW, 24% SC.
 SHOW ME SELECT QUALIFIED



CE	BW	WW	YW	SC	SCF	Milk	M&G	UDDR	TEAT	REA	MARB
5.4	2.3	75	122	1.3	20.9	28	66	1.4	1.4	1.03	0.36

Lots of opportunity with Vanguard. Dark red and heavily pigmented this Equity son will add power and performance as well as maternal and carcass traits.

Owned by Madi Ridder.

Retaining 1/2 semen interest.

Homozygous polled.

Top 4% WW, 3% YW, 24% SC, 20% SCF, 15% MG, 10% UDDR, 14% TEAT, 6% CW, 3% REA, 13% MARB, 13% BMI, 10% BII, 8% CHB.

lot 15

MR VANGUARD 578N
 {DLF, HYF, IEF, MSUDF, MDF, DBF} P44646358 01/24/2025

- JW 1857 MERIT 21134
- CHURCHILL EQUITY 3316L ET
- CHURCHILL LADY 023H ET
- NJW 79Z Z311 ENDURE 173D ET
- MR MS ENDURE 274K
- MR MS PROSPECTOR 858F
- JW X651 TESTED 1857 ET
- JW 33Z VICTORIA 19027
- NJW 76S 27A LONG RANGE 203D ET
- JDH AH MERCEDES 11E ET
- KCF BENNETT ENCORE Z311 ET
- BW 91H 100W RITA 79Z ET
- FTF PROSPECTOR 145Y
- FTF VALENTINE 595C



Act BW		Adj WW		Adj YW		IMF ratio		Adj REA		Adj FAT	
86		685		1206		105		12.87		0.28	
CED	BW	WW	YW	SC	SCF	Milk	M&G	Uddr	Teat	REA	Marb
5.4	2.3	75	122	1.3	20.9	28	66	1.40	1.40	1.03	0.36



MR MS ENDURE 274K
 Dam of Lot 15



CHURCHILL EQUITY 3316L ET
 Sire of Lots 12 - 19



MR MS PROSPECTOR 858F
 Grandam of Lot 15





lot 16 **BR EQUITY 572N**
 {DLF,HYF,IEF,MSUDF,MDF,DBF} P44646353 01/21/2025

JW 1857 MERIT 21134
 CHURCHILL EQUITY 3316L ET
 CHURCHILL LADY 023H ET

JW X651 TESTED 1857 ET
 JW 33Z VICTORIA 19027
 NJW 76S 27A LONG RANGE 203D ET
 JDH AH MERCEDES 11E ET

FTF CONFIDENCE 6113D
 BR CONNIE 1225J
 FTF VALENTINE 595C

FTF PROSPECTOR 145Y
 FTF VERONICA 4107B
 FTF VALUE ADDED 369A
 FTF SONNET 259Z



Act BW		Adj WW		Adj YW		IMF ratio		Adj REA		Adj FAT	
76		598		1037		98		10.53		0.22	
CED	BW	WW	YW	SC	SCF	Milk	M&G	Uddr	Teat	REA	Marb
7.4	-0.9	64	99	1.6	23.9	22	54	1.40	1.50	0.49	0.37

572N stems from the same cow family as lot 15 and has very similar features but he has more calving ease with a little less growth. His outstanding dam, BR Connie 1225J, sells as Lot 49. Owned by Ben Ridder. Homozygous polled. Top 19% CE, 4% BW, 7% SC, 7% SCF, 10% UDDR, 4% TEAT, 11% MARB, 8% BMI, 7% BII. SHOW ME SELECT QUALIFIED



lot 17 **FTF EQUITY 506N**
 {DLF,HYF,IEF,MSUDF,MDF,DBF} P44646254 01/11/2025

JW 1857 MERIT 21134
 CHURCHILL EQUITY 3316L ET
 CHURCHILL LADY 023H ET

JW X651 TESTED 1857 ET
 JW 33Z VICTORIA 19027
 NJW 76S 27A LONG RANGE 203D ET
 JDH AH MERCEDES 11E ET

FTF POWERHOUSE 6623D ET
 FTF PEARL 063H
 FTF LADY 8508F

FTF PORTERHOUSE 455B
 FTF TRENA 366N
 FTF LOGIC 339A
 FTF CLASSIC BEAUTY 907W



Act BW		Adj WW		Adj YW		IMF ratio		Adj REA		Adj FAT	
60		687		1126		100		11.58		0.32	
CED	BW	WW	YW	SC	SCF	Milk	M&G	Uddr	Teat	REA	Marb
16.2	-3.3	45	68	1.3	24.8	30	52	1.50	1.40	0.46	0.24

506N is a stout and thick made calving ease specialist who comes from the very maternal 907 cow family. Homozygous polled. Top 1% CE, 2% BW, 24% SC, 5% SCF, 6% MCE, 11% MCW, 10% UDDR, 14% TEAT, 11% BMI, 15% BII. SHOW ME SELECT QUALIFIED

lot 18 **FTF EQUITY 567N**
 {DLF,HYF,IEF,MSUDF,MDF,DBF} P44646348 01/20/2025

JW 1857 MERIT 21134
 CHURCHILL EQUITY 3316L ET
 CHURCHILL LADY 023H ET

JW X651 TESTED 1857 ET
 JW 33Z VICTORIA 19027
 NJW 76S 27A LONG RANGE 203D ET
 JDH AH MERCEDES 11E ET

H B DISTINCT
 FTF DESTINY 248K
 FTF PROMISE 9211G

NJW 160B 028X HISTORIC 81E ET
 H DS MISS SPICE 8082
 FTF PORTERHOUSE 455B
 FTF SONNET 012X



Act BW		Adj WW		Adj YW		IMF ratio		Adj REA		Adj FAT	
82		723		1102		85		11.51		0.34	
CED	BW	WW	YW	SC	SCF	Milk	M&G	Uddr	Teat	REA	Marb
9.6	0.1	69	106	1.3	19.2	37	71	1.40	1.40	0.86	0.26

567N is a well balanced bull with outstanding EPD's and a very modern pedigree. His Distinct dam is a real producer and is ratioing 106.5 for weaning weight on her first 2 calves. Homozygous polled. Top 10% CE, 8% BW, 12% WW, 20% YW, 24% SC, 7% MM, 5% MG, 10% MCE, 10% UDDR, 14% TEAT, 19% CW, 14% REA, 23% BII. SHOW ME SELECT QUALIFIED

lot 19 **FTF EQUITY 562N**
 {DLF,HYF,IEF,MSUDF,MDF,DBF} P44646343 01/19/2025

JW 1857 MERIT 21134
 CHURCHILL EQUITY 3316L ET
 CHURCHILL LADY 023H ET

JW X651 TESTED 1857 ET
 JW 33Z VICTORIA 19027
 NJW 76S 27A LONG RANGE 203D ET
 JDH AH MERCEDES 11E ET

FTF VALUE ADDED 556C
 FTF VIRGINIA 106J
 FTF TONYA 876F

TH 122 71I VICTOR 719T
 FTF MS PROSPECT 377A
 HUTH FTF TORQUE C002
 FTF MS PROSPECTOR 413B



Act BW		Adj WW		Adj YW		IMF ratio		Adj REA		Adj FAT	
80		650		1057		81		10.40		0.18	
CED	BW	WW	YW	SC	SCF	Milk	M&G	Uddr	Teat	REA	Marb
8.0	0.6	57	92	1.7	17.4	31	60	1.50	1.50	0.23	0.07

562N is a dark red well pigmented bull that is extra nice. We unfortunately don't have a picture but he will be easy to find sale day. Homozygous polled. Top 16% CE, 13% BW, 5% SC, 2% UDDR, 4% TEAT, 5% FAT. SHOW ME SELECT QUALIFIED



Sire of Lots 20 - 24



lot 20 **FTF MAGNIFICO 527N**
 {DLF,HYF,IEF,MSUDF,MDF,DBF} P44646311 01/15/2025

BG LCC 11B PERFECTO 84F
 FTF MAGNIFICO 120J
 FTF VALENTINE 877F

SHF HOUSTON D287 H086
 FTF WHITNEY 346L
 FTF PROMISE 9211G

LCX PERFECTO 11B ET
 BG 100W NICKY 31C
 FTF VALUE ADDED 369A
 FTF GINGER 480B

SHF DAYBREAK Y02 D287 ET
 SHF MISS 14 20Z D223
 FTF PORTERHOUSE 455B
 FTF SONNET 012X



Act BW		Adj WW		Adj YW		IMF ratio		Adj REA		Adj FAT	
72		863		1316		94		13.24		0.30	
CED	BW	WW	YW	SC	SCF	Milk	M&G	Uddr	Teat	REA	Marb
4.5	2.8	82	126	1.1	18.0	38	79	1.30	1.20	0.78	0.09

Raised by a heavy milking two year old Houston daughter 527N has proven to be one of the stoutest made growthiest bulls in the whole line up. One of the biggest weaning weight ratios in recent years at 131. Use with confidence to add performance and maternal traits.

Homozygous polled.

Top 1% WW, 1% YW, 3% MM, 1% MG, 9% CW, 15% REA.



lot 21 **FTF MAGNIFICO 5215N**
 {DLF,HYF,IEF,MSUDF,MDC,DBF} P44646294 12/21/2024

BG LCC 11B PERFECTO 84F
 FTF MAGNIFICO 120J
 FTF VALENTINE 877F

NJW 73S W18 HOMETOWN 10Y ET
 FTF HOMETOWN HONEY 4225B
 FTF ROSE RANGER 018X

LCX PERFECTO 11B ET
 BG 100W NICKY 31C
 FTF VALUE ADDED 369A
 FTF GINGER 480B

SHF WONDER M326 W18 ET
 NJW P606 72N DAYDREAM 73S
 RF TIME IS RIGHT 53S
 FTF LADY RANGER 7101T



Act BW		Adj WW		Adj YW		IMF ratio		Adj REA		Adj FAT	
95		825		1302		129		13.46		0.29	
CED	BW	WW	YW	SC	SCF	Milk	M&G	Uddr	Teat	REA	Marb
2.9	3.9	73	120	1.2	23.4	40	76	1.10	1.10	0.47	0.39

Another power bull with maternal and carcass traits. 5215 is so stout he is an attention getter. His mother is a Dam of Distinction and records 10 calves with a 107.4 weaning weight ratio. Also he has one of the highest ultrasound marbling scores and ratioed 129. Heterozygous polled. Heavily scurred. MDC.

Top 4% WW, 3% YW, 8% SCF, 2% MM, 1% MG, 3% CW, 8% MARB, 5% BMI, 4% BII, 5% CHB



lot 22
FTF MAGNIFICO 575N
 {DLF,HYF,IEF,MSUDF,MDF,DBF} P44646355 01/22/2025

BG LCC 11B PERFECTO 84F
 FTF MAGNIFICO 120J
 FTF VALENTINE 877F
 TH MASTERPLAN 183F
 FTF MAXINE 3417L
 FTF GINGER 480B
 LCX PERFECTO 11B ET
 BG 100W NICKY 31C
 FTF VALUE ADDED 369A
 FTF GINGER 480B
 KCF BENNETT STRATEGY Z303 ET
 TH 512X 145Y DOMINETTE 57B
 FTF GARRETT 020X
 FTF FABULOUS 2217Z



Act BW	Adj WW	Adj YW	IMF ratio	Adj REA	Adj FAT						
68	711	1140	133	12.84	0.32						
CED	BW	WW	YW	SC	SCF	Milk	M&G	Uddr	Teat	REA	Marb
5.8	1.4	68	108	1.5	16.6	36	71	1.30	1.30	0.41	0.50

575N is a well made Magnifico son with good growth and exceptional carcass traits as he ratioed 133 for IMF. He is linebred to the 480 cow and loaded with Dams of Distinction. Homozygous polled. Top 25% BW, 10% WW, 12% YW, 17% SC, 7% MM, 5% MG, 21% MCE, 13% CW, 4% MARB, 7% CHB.



lot 23
FTF MAGNIFICO 5210N
 {DLF,HYF,IEF,MSUDF,MDF,DBF} P44646289 12/19/2024

BG LCC 11B PERFECTO 84F
 FTF MAGNIFICO 120J
 FTF VALENTINE 877F
 FTF PRIME PRODUCT 226Z
 FTF PRIMETIME MISS 608D
 FTF MS REVOLUTION 424B
 LCX PERFECTO 11B ET
 BG 100W NICKY 31C
 FTF VALUE ADDED 369A
 FTF GINGER 480B
 SHF RIB EYE M326 R117
 FTF CLASSIC MISS 0206X
 MSU TCF REVOLUTION 4R
 FTF TRINA 926W



Act BW	Adj WW	Adj YW	IMF ratio	Adj REA	Adj FAT						
95	775	1152	85	11.93	0.22						
CED	BW	WW	YW	SC	SCF	Milk	M&G	Uddr	Teat	REA	Marb
6.3	1.7	70	113	1.2	18.9	38	73	1.20	1.30	0.73	0.24

5210 is stout and powerful with a solid set of EPD's. His mother is a Dam of Distinction and is also the mother of FTF Testimony 828F that we own with Bourbeuse Bend Herefords Beaufort, MO and Dave Warbarton in New Zealand. Homozygous polled. Top 25% CE, 10% WW, 8% YW, 4% MM, 2% MG, 1% mce, 15% CW, 17% FAT, REA 23%, 20%, BMI, 18% BII, 11% CHB.



lot 24
FTF MAGNIFICO 557N
 {DLF,HYF,IEF,MSUDF,MDF,DBF} P44646340 01/19/2025

BG LCC 11B PERFECTO 84F
 FTF MAGNIFICO 120J
 FTF VALENTINE 877F
 TH MASTERPLAN 183F
 FTF MAXINE 355L
 FTF MISS PROFIT 9210G
 LCX PERFECTO 11B ET
 BG 100W NICKY 31C
 FTF VALUE ADDED 369A
 FTF GINGER 480B
 KCF BENNETT STRATEGY Z303 ET
 TH 512X 145Y DOMINETTE 57B
 FTF PRIME PRODUCT 513C
 FTF TOUCH OF CLASS 853U



Act BW	Adj WW	Adj YW	IMF ratio	Adj REA	Adj FAT						
60	618	1066	115	11.90	0.22						
CED	BW	WW	YW	SC	SCF	Milk	M&G	Uddr	Teat	REA	Marb
10.4	-1.0	59	92	1.0	20.1	25	54	1.50	1.60	0.61	0.19

557N offers calving ease, performance, maternal and carcass traits. His goggle eyed mother is an ideal cow. We unfortunately did not get a picture of 557N but will be easy to find sale day. Homozygous polled. Top 7% CE, 4% BW, 25% SCF, 2% UDDR, 1% TEAT, 25% BMI. SHOW ME SELECT QUALIFIED



CE	BW	WW	YW	SC	SCF	Milk	M&G	UDDR	TEAT	REA	MARB
8.3	0.6	63	101	1.9	18.5	21	52	1.6	1.5	0.73	0.30

Brilliance is a bull that checks all the boxes and does everything well for all the traits on his EPD profile as well as his performance ratios. Stout and powerful he descends from the same cow family that produced Relevant and this years Lot 1 Prototype. His dam is also a full sister to FTF Untouchable 046H owned with Menzies Cattle Company, LLC.

Retaining 1/2 semen interest. Homozygous polled. Top 15% CE, 14% BW, 3% SC, 13% MCE, 1% UDDR, 4% TEAT, 4% CW, 17% REA, 15% MARB, 24% BII, 9% CHB. SHOW ME SELECT QUALIFIED

lot 25 **FTF BRILLANCE 5221N**
 {DLF, HYF, IEF, MSUDF, MDF, DBF} P44646301 01/07/2025

TH MASTERPLAN 183F
 FTF MASTERPLAN 1707J
 FTF CLASSY LADY 7615E ET

HUTH FTF TORQUE C002
 FTF TONYA 878F
 FTF ROSALINDA 573C

KCF BENNETT STRATEGY Z303 ET
 TH 512X 145Y DOMINETTE 57B
 DR WORLD CLASS 517 10H
 FTF TRENA 366N

SHF YORK 19H Y02
 HUTH T013 DOMINETTE 2016
 FTF REVOLUTION 2429Z ET
 OVF PRETTY MISS 702T



Act BW	Adj WW	Adj YW	IMF ratio	Adj REA	Adj FAT						
88	761	1203	110	12.82	0.40						
CED	BW	WW	YW	SC	SCF	Milk	M&G	Uddr	Teat	REA	Marb
8.6	0.6	63	101	1.9	18.5	21	52	1.60	1.50	0.73	0.30



FTF UNTOUCHABLE 046H
 Full Brother to Dam of Lot 25



HUTH FTF TORQUE C002
 Grandsire of Lot 25



FTF REVOLUTION 2429Z ET
 Great Grandsire of Lot 25





Sire of Lots 25 - 27



lot 26 **FTF MASTERFUL 5219N**
 {DLF, HYF, IEF, MSUDF, MDF, DBF} P44646298 01/03/2025

TH MASTERPLAN 183F
 FTF MASTERPLAN 1707J
 FTF CLASSY LADY 7615E ET

TH 122 711 VICTOR 719T
 FTF VERONICA 414B
 FTF SONNET 2208Z

KCF BENNETT STRATEGY Z303 ET
 TH 512X 145Y DOMINETTE 57B
 DR WORLD CLASS 517 10H
 FTF TRENA 366N

DRF JWR PRINCE VICTOR 711
 KBCR 19D DOMINETTE 122
 GRANDVIEW 7OAKS SONORA 145R
 FTF TRENA 570R



Act BW		Adj WW		Adj YW		IMF ratio		Adj REA		Adj FAT	
81		712		1099		97		11.85		0.28	
CED	BW	WW	YW	SC	SCF	Milk	M&G	Uddr	Teat	REA	Marb
8.5	1.0	62	103	1.3	16.4	22	53	1.60	1.60	0.73	0.06

5219N is a bull that combines a very usable EPD's and overall balance as well as performance. His 12 year old Dam of Distinction mother continues to produce big year after year.
 Homozygous polled.
 Top 15% CE, 19% BW, 14% DMI, 24% SC, 24% MCE, 1% UDDR, 1% TEAT, 15% CW, 17% FAT, 20% REA, 15% CHB.
 SHOW ME SELECT QUALIFIED



lot 27 **FTF MASTERFUL 5501N**
 {DLF, HYF, IEF, MSUDF, MDF, DBF} P44646331 01/05/2025

TH MASTERPLAN 183F
 FTF MASTERPLAN 1707J
 FTF CLASSY LADY 7615E ET

FTF PRIME PRODUCT 226Z
 FTF PRIMETIME MISS 701E
 FTF MS PROSPECTOR 520C

KCF BENNETT STRATEGY Z303 ET
 TH 512X 145Y DOMINETTE 57B
 DR WORLD CLASS 517 10H
 FTF TRENA 366N

SHF RIB EYE M326 R117
 FTF CLASSIC MISS 0206X
 FTF PRIME PRODUCT 226Z
 FTF MS REVOLUTION 2312Z



Act BW		Adj WW		Adj YW		IMF ratio		Adj REA		Adj FAT	
80		696		1074		119		15.08		0.27	
CED	BW	WW	YW	SC	SCF	Milk	M&G	Uddr	Teat	REA	Marb
5.4	0.4	60	97	1.5	22.1	33	63	1.30	1.20	0.55	0.36

Square made and powerful 5501N should be quite a baldy maker as well as a quality grade improver. Being double bred Prime Product it is no shock that his Efficiency EPD (DMI) is so good even though he has excellent growth.
 Homozygous polled.
 Top 12% BW, 11% SC, 13% SCF, 17% MM, 21% MG, 14% MCE, 21% CW, 10% MARB, 9% BMI, 8% BII, 8% CHB.



lot 28

FTF DISTINCT 589N
 {DLF,HYF,IEF,MSUDF,MDF,DBF} P44646366 02/04/2025

H B DISTINCT
 FTF DISTINCT 326L
 FTF MS FRONTIER 0421H

 FTF FRONTIER 0705H
 FTF LINDA 386L
 FTF TONYA 090H

NJW 160B 028X HISTORIC 81E ET
 H DS MISS SPICE 8082
 TH FRONTIER 174E
 FTF CLASSY LADY 134Y

 TH FRONTIER 174E
 FTF CLASSY LADY 7615E ET
 HUTH FTF TORQUE C002
 FTF MS PROSPECTOR 520C



Act BW	Adj WW	Adj YW	IMF ratio	Adj REA	Adj FAT						
68	781	1235	76	13.64	0.23						
CED	BW	WW	YW	SC	SCF	Milk	M&G	Uddr	Teat	REA	Marb
6.0	2.4	84	136	1.7	20.2	42	84	1.20	1.10	0.65	0.00

Only a handful of cattle in the breed can match the EPD spread on 589N with a CED of 6 to a YW of 136. All of that in a very maternal and highly attractive package. His sire is a ¼ brother to Lot 1. Retaining ½ semen interest. Homozygous polled.

Top 1% WW, 1% YW, 5% SC, 20% SCF, 2% MM, 1% MG, 20% MCE, 8% CW, 21% REA, 18% BMI, 17% BII.



lot 29

FTF DEFINED 509N
 {DLF,HYF,IEF,MSUDF,MDF,DBF} P44646257 01/12/2025

NJW 160B 028X HISTORIC 81E ET
 H B DISTINCT
 H DS MISS SPICE 8082

 CMF 333E HITCHING POST 648H
 FTF PREDICTABLE 322L
 FTF HOMETOWN HONEY 8402F

CHURCHILL SENSATION 028X
 NJW 73S 38W DAYDREAM 160B
 LCX PERFECTO 11B ET
 H BL MISS SPICE 613 ET

 INNISFAIL WHR X651/723 4013 ET
 CMF 59A ANN 333E
 NJW 73S W18 HOMETOWN 10Y ET
 FTF VERONICA 419B



Act BW	Adj WW	Adj YW	IMF ratio	Adj REA	Adj FAT						
72	662	1053	134	11.29	0.						
CED	BW	WW	YW	SC	SCF	Milk	M&G	Uddr	Teat	REA	Marb
7.5	1.1	63	91	1.2	24.3	32	63	1.40	1.50	0.73	0.39

Overall 509N would be one of the best Distinct sons we have had so far and we have had quite a few of them. His dam is a moderate sized slick haired Hitching Post 2-year-old with a perfect udder. His grandam is the mother of FTF Sunrise 249K who is owned with Why O Why Farms in Louisiana. His combination of phenotype, structure, calving ease, maternal and carcass traits is hard to come by. Retaining ½ semen interest. Homozygous polled. Top 20% CE, 20% BW, 4% SCF, 21% MM, 21% MG, 10% UDDR, 4% TEAT, 21% REA, 7% MARB, 4% BMI, 3% BII, 14% CHB. SHOW ME SELECT QUALIFIED



lot 30

FTF DISTINCT 5214N
 {DLF,HYF,IEF,MSUDF,MDF,DBF} P44646293 12/20/2024

NJW 160B 028X HISTORIC 81E ET
 H B DISTINCT
 H DS MISS SPICE 8082

 FTF VALUE ADDED 369A
 FTF VALENTINE 879F
 FTF CLASSY LADY 4215B

CHURCHILL SENSATION 028X
 NJW 73S 38W DAYDREAM 160B
 LCX PERFECTO 11B ET
 H BL MISS SPICE 613 ET

 TH 122 711 VICTOR 719T
 FTF FABULOUS 181Y
 DR WORLD CLASS 517 10H
 FTF CLASSIC MISS 952W



Act BW	Adj WW	Adj YW	IMF ratio	Adj REA	Adj FAT						
83	666	1119	88	13.74	0.18						
CED	BW	WW	YW	SC	SCF	Milk	M&G	Uddr	Teat	REA	Marb
11.0	-0.4	60	87	1.8	19.4	33	63	1.50	1.60	0.58	0.25

5214N is an attractive Distinct son that is loaded with calving ease and maternal traits including extremely good teat and udder epd's. Homozygous polled.

Top 8% CE, 6% BW, 5% SC, 17% MM, 21% MG, 2% MCE, 2% UDDR, 1% TEAT.

SHOW ME SELECT QUALIFIED



lot 31 **FTF PERFECTO 580N**
 {DLF,HYF,IEF,MSUDF,MDF,DBF} P44646360 01/27/2025

LCX PERFECTO 11B ET
 BG LCC 11B PERFECTO 84F
 BG 100W NICKY 31C

FTF OUTLIER 0213H
 FTF LENA 271K
 FTF MS FRONTIER 0425H

NJW 98S R117 RIBEYE 88X ET
 WLL ZOEY 3Z
 NJW 73S M326 TRUST 100W ET
 BG MS DOMINO 90Z

R LEADER 6964
 FTF DURA LENA 113Y
 TH FRONTIER 174E
 FTF MS PROSPECTOR 6218D



Act BW	Adj WW	Adj YW	IMF ratio	Adj REA	Adj FAT						
90	757	1227	91	13.32	0.47						
CED	BW	WW	YW	SC	SCF	Milk	M&G	Uddr	Teat	REA	Marb
8.8	1.2	68	109	0.4	21.2	44	78	1.40	1.40	0.62	-0.03

580N is a big and stout Perfecto 84F son. His design and structure is nearly ideal much like his paternal brother FTF Magnifico 120J. 580N offers exceptional calving ease, maternal, and growth traits. Homozygous polled. Top 14% CE, 22% BW, 12% WW, 12% YW, 20% SCF, 1% MM, 1% MG, 18% MCE, 10% UDDR, 14% TEAT. SHOW ME SELECT QUALIFIED



lot 32 **FTF HOUSTON 551N**
 {DLF,HYF,IEF,MSUDF,MDF,DBF} P44646334 01/18/2025

SHF DAYBREAK Y02 D287 ET
 SHF HOUSTON D287 H086
 SHF MISS 14 20Z D223

EFBEEF B413 PRIMESTOCK E007 ET
 FTF PARIS 1228J
 FTF HOMETOWN HONEY 4225B

SHF YORK 19H Y02
 SHF MISS M326 T08 ET
 LOEWEN 44X 6X 20Z
 SHF RADAR R125 T75

EFBEEF BR VALIDATED B413
 EFBEEF 6378 KATE W484
 NJW 73S W18 HOMETOWN 10Y ET
 FTF ROSE RANGER 018X



Act BW	Adj WW	Adj YW	IMF ratio	Adj REA	Adj FAT						
88	676	1113	89	14.98	0.20						
CED	BW	WW	YW	SC	SCF	Milk	M&G	Uddr	Teat	REA	Marb
1.7	3.6	68	118	1.8	16.9	31	65	1.30	1.20	0.85	0.61

551N is extremely stout and muscular. His growth traits are exceptional and his carcass epd's and CHB number are among the top of the breed. His dam sells as Lot 47 and his maternal grandmother is the mother of Lot 21. He should make a front pasture sire. Homozygous polled. Top 10% WW, 4% YW, 3% SC, 17% MM, 9% MG, 21% MCE, 3% CW, 4% REA, 2% MARB, 19% BMI, 12% BII, 1% CHB



lot 33 **FTF REDBIRD 559N**
 {DLF,HYF,IEF,MSUDF,MDF,DBF} P44646342 01/19/2025

CHURCHILL RED BARON 8300F ET
 BIRDWELL REDBIRD 7098 0558ET
 BR VALIDATED B413 6035 7098

APH 4356 COLORADO 15G
 FTF MISS COLORADO 3221L
 FTF PROMISE 8207F

R LEADER 6964
 CHURCHILL LADY 500C ET
 EFBEEF BR VALIDATED B413
 BR BENNETT 4R Y428 2101 6035

R EXCITEMENT 4356
 CPH 10Y WYNNE 14B
 FTF PORTERHOUSE 455B
 FTF FLIRTATIOUS 2301Z



Act BW	Adj WW	Adj YW	IMF ratio	Adj REA	Adj FAT						
65	653	1091	92	13.50	0.26						
CED	BW	WW	YW	SC	SCF	Milk	M&G	Uddr	Teat	REA	Marb
6.8	0.4	66	108	1.6	21.8	21	55	1.50	1.60	0.65	0.34

559N is a dark red heavily pigmented Redbird son. He has some quality EPD's and should be excellent for use on heifers. Homozygous polled. Top 24% CE, 12% BW, 17% WW, 15% YW, 7% SC, 15% SCF, 5% MCE, 2% UDDR, 4% TEAT, 1% FAT, 20% REA, 14% MARB, 15% BMI, 13% BII, 24% CHB.



Sire of Lots 34 - 35

lot 34

FTF SHERMAN 534N
{DLF, HYF, IEF, MSUDF, MDF, DBF} P44646318 01/15/2025

KCF BENNETT RESOLVE G595
CHURCHILL W4 SHERMAN 2157K ET
CHURCHILL LADY 079H ET

KCF BENNETT TRUST B279 ET
KCF MISS TESTED C422
EXR BANKROLL 8130 ET
CHURCHILL LADY 7189E ET

TH MASTERPLAN 183F
FTF MAXINE 227K
FTF VALENTINE 758E

KCF BENNETT STRATEGY Z303 ET
TH 512X 145Y DOMINETTE 57B
FTF VALUE ADDED 369A
FTF GINGER 396A



Act BW		Adj WW		Adj YW		IMF ratio		Adj REA		Adj FAT	
85		586		1087		114		12.84		0.32	
CED	BW	WW	YW	SC	SCF	Milk	M&G	Uddr	Teat	REA	Marb
-0.4	1.8	62	105	1.1	20.5	26	57	1.40	1.40	0.80	0.45

534N is well balanced and stout made. He had exceptional ultrasound marbling and high carcass EPD's. His dam and granddam are some of the most attractive cows in our herd. Homozygous polled. Top 18% YW, 22% SCF, 10% UDDR, 14% TEAT, 7% CW, 12% REA, 6% MARB, 12% BMI, 10% BII, 4% CHB.



517N is the only Small Town Kid in the sale but he is a good one. His dam, FTF Connie 172J, sells as Lot 46 and is a big producing Confidence daughter that is out of Relevant's mother. Nice combination bull here. Homozygous polled. Top 14% CE, 7% BW, 14% WW, 5% MM, 4% MG, 4% MCE, 2% UDDR, 1% TEAT, 20% REA, 22% BMI, 20% BII, 18% CHB. SHOW ME SELECT QUALIFIED

lot 35

FTF SHERMAN 573N
{DLF, HYF, IEF, MSUDF, MDF, DBF} P44646354 01/22/2025

KCF BENNETT RESOLVE G595
CHURCHILL W4 SHERMAN 2157K ET
CHURCHILL LADY 079H ET

KCF BENNETT TRUST B279 ET
KCF MISS TESTED C422
EXR BANKROLL 8130 ET
CHURCHILL LADY 7189E ET

FTF PRIME PRODUCT 513C
FTF MISS PROFIT 024H
FTF PROMISE 8216F

FTF PRIME PRODUCT 226Z
FTF MS CLASSIC 241Z
FTF PORTERHOUSE 455B
FTF MISS RIB EYE 107Y



Act BW		Adj WW		Adj YW		IMF ratio		Adj REA		Adj FAT	
86		658		1107		114		11.34		0.28	
CED	BW	WW	YW	SC	SCF	Milk	M&G	Uddr	Teat	REA	Marb
4.3	0.4	58	90	1.3	15.2	27	56	1.30	1.40	0.68	0.54

573N is another Sherman that will add marbling and maternal traits. His dam has been a solid producer and has a great udder. Homozygous polled. Top 11% BW, 24% SC, 22% MCE, 12% MCW, 14% TEAT, 3% MARB, 13% CHB.

lot 36

FTF SMALL TOWN KID 517N
{DLF, HYF, IEF, MSUDF, MDF, DBF} P44646276 01/13/2025

KT SMALL TOWN KID 5051
RST 5051 SMALL TOWN KID 9023
RST MS 4180 REVOLUTION 7054

NJW 73S W18 HOMETOWN 10Y ET
KT MS 0124 TIMES A WASTIN 2086
RST X51 REVOLUTION 4180
RST MS X651 TESTED 5079

FTF CONFIDENCE 6113D
FTF CONNIE 172J
FTF MS REVOLUTION 626D

FTF PROSPECTOR 145Y
FTF VERONICA 4107B
MSU TCF REVOLUTION 4R
OVF PRETTY MISS 702T



Act BW		Adj WW		Adj YW		IMF ratio		Adj REA		Adj FAT	
75		675		1118		96		13.01		0.20	
CED	BW	WW	YW	SC	SCF	Milk	M&G	Uddr	Teat	REA	Marb
8.0	-0.3	68	100	1.3	19.4	37	71	1.50	1.60	0.66	0.25





lot 37

FTF HIGH RISE 591N

{DLF,HYF,IEF,MSUDF,MDF,DBF} P44646368 02/05/2025

GERBER HIGH TIME H65
PF HIGH RISE 2301
FTF CLASSY LADY 7623E ET

GERBER CANAAN 041C
GERBER Z426 DIXIE E066
DR WORLD CLASS 517 10H
FTF TRENA 366N

FTF UNTOUCHABLE 046H
FTF ULTRA 212K
FTF MIRANDA 824F

HUTH FTF TORQUE C002
FTF ROSALINDA 573C
FTF NET MERIT 444B
FTF MS PROSPECTOR 526C



Act BW		Adj WW		Adj YW		IMF ratio		Adj REA		Adj FAT	
78		718		1152		91		12.96		0.30	
CED	BW	WW	YW	SC	SCF	Milk	M&G	Uddr	Teat	REA	Marb
7.3	0.7	71	111	1.5	21.1	30	66	1.30	1.30	0.65	0.24

591N is backed by some of the best female making FTF sires including Untouchable, Net Merit, and Prospector 145Y. He performed really well individually and has a great phenotype as well as EPD's. Should make a rock solid sire.

Homozygous polled.

Top 17% CE, 11% BW, 8% WW, 12% YW, 11% SC, 19% SCF, 18% MG, 13% MCE, 4% CW, 23% REA, 14% BMI, 12% BII, 13% CHB.

SHOW ME SELECT QUALIFIED



lot 38

FTF STARDANCE 5201N

{DLF,HYF,IEF,MSUDF,MDF,DBF} P44646279 12/14/2024

DS 1045 ADVANCE 3575N
STARDANCE M8086 ET
CHURCHILL LADY 284Z ET

HH ADVANCE 1045L
DS 6805 MS TROY 8605
CHURCHILL SENSATION 028X
CHURCHILL LADY 6109S ET

KCF BENNETT HOMELAND C34
FTF MS HOMELAND 934G
FTF PROMISE 753E

NJW 73S W18 HOMETOWN 10Y ET
KCF MISS PROFICIENT A47
FTF PORTERHOUSE 455B
FTF MS PROSPECT 375A



Act BW		Adj WW		Adj YW		IMF ratio		Adj REA		Adj FAT	
77		681		1105		122		13.25		0.47	
CED	BW	WW	YW	SC	SCF	Milk	M&G	Uddr	Teat	REA	Marb
10.1	0.8	61	101	1.3	23.0	39	69	1.20	1.20	0.28	0.55

Such great EPD's on this outcross bull. Stout made and well marked 5201 offers all the essentials including calving ease, growth, maternal and carcass traits. His dam is also a Dam of Distinction.

Heterozygous polled/ scurred.

Top 9% CE, 16% BW, 10% SCF, 4% MM, 6% MG, 7% MCE, 4% MARB, 9% BMI, 7% BII, 12% CHB.

SHOW ME SELECT QUALIFIED

lot 39

FTF HIGH TIME 586N

{DLF,HYF,IEF,MSUDF,MDF,DBF} P44646364 02/02/2025

GERBER HIGH TIME H65
FTF HIGH TIME 2703K
FTF CLASSY LADY 7615E ET

GERBER CANAAN 041C
GERBER Z426 DIXIE E066
DR WORLD CLASS 517 10H
FTF TRENA 366N

FTF FRONTIER 0705H
FTF TAMMY 3102L
FTF TONYA 0413H

TH FRONTIER 174E
FTF CLASSY LADY 7615E ET
HUTH FTF TORQUE C002
FTF MS REVOLUTION 6213D



Act BW		Adj WW		Adj YW		IMF ratio		Adj REA		Adj FAT	
74		659		1021		91		13.11		0.24	
CED	BW	WW	YW	SC	SCF	Milk	M&G	Uddr	Teat	REA	Marb
9.1	0.7	63	98	1.3	20.2	31	62	1.50	1.40	0.56	0.11

586N has a great EPD's combination to go along with strong phenotype. Double bred to the Classy Lady 7615 cow and that should add to his cow power. Homozygous polled.

Top 12% CE, 16% BW, 24% SC, 25% MG, 9% MCE, 2% UDDR, 14% TEAT, 21% CW. SHOW ME SELECT QUALIFIED

lot 40

FTF HIGH RISE 597N

{DLF,HYF,IEF,MSUDF,MDF,DBF} P44646374 02/07/2025

GERBER HIGH TIME H65 (CHB)
PF HIGH RISE 2301
FTF CLASSY LADY 7623E ET

GERBER CANAAN 041C
GERBER Z426 DIXIE E066
DR WORLD CLASS 517 10H
FTF TRENA 366N

H B DISTINCT
FTF DESTINY 207K
FTF MISS FRONTIER 0218H

NJW 160B 028X HISTORIC 81E ET
H DS MISS SPICE 8082
TH FRONTIER 174E
FTF GINGER 396A



Act BW		Adj WW		Adj YW		IMF ratio		Adj REA		Adj FAT	
78		712		1158		86		13.29		0.29	
CED	BW	WW	YW	SC	SCF	Milk	M&G	Uddr	Teat	REA	Marb
5.6	0.7	61	96	2.1	22.1	26	57	1.40	1.40	0.37	0.41

Excellent performance ratios and EPD's on this High Rise son. His Distinct dam is one of good young cows in the herd.

Homozygous polled.

Top 12% BW, 1% SC, 10% UDDR, 14% TEAT, 8% MARB, 18% BMI, 15% BII.



REFERENCE SIRES



Ref **FTF WASHINGTON 449M**
{DLF, HYF, IEF, MSUDF, MDF, DBF} P44539799 01/16/2024

KCF BENNETT B716 F597
 KCF BENNETT MONUMENT J338
 KCF MISS LANDMARK G301

KCF BENNETT HOME LAND C34
 FTF MS HOME LAND 927G
 FTF VALENTINE 776E

KCF BENNETT DEVOUT B716 ET
 KCF MISS REVOLUTION X322 ET
 R LANDMARK 4386
 KCF MISS CUDA E368

NJW 73S W18 HOMETOWN 10Y ET
 KCF ISS PROFICIENT A47
 FTF VALUE ADDED 369A
 FTF CLASSY LADY 322A

AHA GE-EPD											
Act BW	Adj WW	Adj YW	IMF ratio	Adj REA	Adj FAT						
75	807.85	1253.34	140	15.62	0.44						
CED	BW	WW	YW	SC	SCF	Milk	M&G	Uddr	Teat	REA	Marb
12.1	0.4	84	127	1.8	22.6	40	82	1.40	1.40	0.97	0.36

Washington is a dark red, huge bodied powerhouse of a beef bull with so much potential. His DOD mother is a picture perfect cherry red female with an ideal udder. His performance ratios in our herd are as good as we've ever had. Washington is the right kind of bull to lead the beef industry in the near future. Owned with Why-Oh-Why Farm, Mount Hermon, LA; Largent & Sons, Kaycee, WY; West/Shelby, Denham Springs, LA. Homozygous polled.



Ref **FTF MAGNIFICO 120J**
{DLF, HYF, IEF, MSUDF, MDF, DBF} P44235486 1/14/2021

LCX PERFECTO 11B ET
 BG LCC 11B PERFECTO 84F
 BG 100W NICKY 31C

FTF VALUE ADDED 369A
 FTF VALENTINE 877F
 FTF GINGER 480B

NJW 98S R117 RIBEYE 88X ET
 WLL ZOEY 3Z
 NJW 73S M326 TRUST 100W ET
 BG MS DOMINO 90Z

TH 122 71I VICTOR 719T
 FTF FABULOUS 181Y
 FTF GARRETT 020X
 FTF FABULOUS 2217Z

AHA GE-EPD											
Act BW	Adj WW	Adj YW	Adj IMF	Adj REA	Adj FAT						
74	697	1158	2.63	13.25	0.38						
CED	BW	WW	YW	SC	SCF	Milk	M&G	Uddr	Teat	REA	Marb
11.3	-1.8	63	96	0.8	25.5	41	72	1.4	1.4	0.51	0.23

Magnifico provides the perfect balance of necessary traits with tremendous eye appeal. This fully pigmented Perfecto 84F son has all traits in the right direction with great calving ease, growth and carcass performance. He was the high selling bull in our 2022 sale. Owned with Schoenberger Polled Herefords, Aurora, MO; leased to ST Genetics, Navasota, TX. Homozygous polled.



Ref **FTF PROSPECTOR 145Y**
{SOD, DLF, HYF, IEF, MSUDF, MDF} P43182570 01/17/2011

RRH MR FELT 3008
 HUTH PROSPECTOR K085
 HUTH 34A PAULA 68F

FTF BOMBARDIER 309N
 FTF CHICK A BOOM 7227T
 FTF LEANNA 480P

FELTONS 517
 RRH MS VICT 6191
 HUIH PAUL 60D
 HUTH 220S MAGNA 34A

CS BOOMER 29F
 FTF TEMPTRESS 688F
 FTF LIMITED EDITION 232
 FTF CANDACE 126L

AHA GE-EPD											
Act BW	Adj WW	Adj YW	Adj IMF	Adj REA	Adj FAT						
80	672	1247	4.08	13.60	0.55						
CED	BW	WW	YW	SC	SCF	Milk	M&G	Uddr	Teat	REA	Marb
2.9	2.7	63	107	1.1	15.5	29	61	1.2	1.2	0.15	0.17

Prospector's ability to pass on performance traits and style seem to carry on for many generations. He's been used widely here and around the globe. He sired the highest selling bull in the breed in 2015 and has once again gained notoriety as he is the grandsire of the popular ST Genetics bull, TH Masterplan 183F. Trait leader for YW, M&G, Marbling, and CHB. Owned with Topp Herefords, Grace City, ND; Genex Cooperative Inc. - Canada; Shady Oak Farm, Baton Rouge, LA. Homozygous polled.

REFERENCE SIRES



Ref

HUTH FTF TORQUE C002

(SOD, DLF, HYF, IEF, MSUDF, MDF) P43594696 04/11/2015

MSU MF HUDSON 19H
SHF YORK 19H Y02
LOEWEN MISS P20 10W

MSU WNH FELTON 5F
MSU VICTORIA 9F
SHF PROGRESS P20
LOEWEN M326 MISS 39T

UPS DOMINO 3027
HUTH T013 DOMINETTE Z016
HUTH R007 VERA T013

CL 1 DOMINO 9216J ET
UPS MISS DIAMOND 1353
SHF PROGRESS P20
HUTH 9216J JACKIE 17Y R007 ET



Act BW		Adj WW		Adj YW		Adj IMF		Adj REA		Adj FAT	
83		747		1277		1.87		11.51		0.25	
CED	BW	WW	YW	SC	SCF	Milk	M&G	Uddr	Teat	REA	Marb
3.5	3.3	73	111	1.9	19.5	19	55	1.6	1.6	0.35	-0.04

We had high expectations for Torque, and he has exceeded them in many ways. He has proven to sire well marked, pigmented cattle with a good sized frame, along with a great hip and strong top. His sons are big and powerful and his daughters are stunning. His trait and udder scores are in the top 1% of the breed (+1.6 & +1.6). Trait leader for WW, YW, SC, Udder, Teat, CW. Owned with Huth Polled Herefords, Oakfield, WI; Select Sires Inc., Plain City, Ohio; Select Sires - Canada. Homozygous polled.



Ref

APH 4356 COLORADO 15G

(DLF, HYF, IEF, MSUDF, MDF) P44040662 02/23/2019

R NEW YORK 5083
R EXCITEMENT 4356
R MISS ON TARGET 384

SHF YORK 19H Y02
R MISS PUCKSTER 971
HYALITE ON TARGET 936
R MISS FELT 1479

NJW 73S W18 HOMETOWN 10Y ET SHF WONDER M326 W18 ET
CPH 10Y WYNNE 14B NJW P606 72N DAYDREAM 73S
LJR WINONA 229S CMF 584T FRONTIER 634L
LJR DAWN 270K



Act BW		Adj WW		Adj YW		Adj IMF		Adj REA		Adj FAT	
75		643									
CED	BW	WW	YW	SC	SCF	Milk	M&G	Uddr	Teat	REA	Marb
-0.4	2.6	63	100	1.6	17.4	23	54	1.2	1.2	0.53	0.26

Colorado has attracted a lot of attention with his stunning good looks and pleasing pedigree. He sires moderate birthweight, lots of pigment, and great structure. He will continue to be popular in the Hereford breed. Owned with Aufdenberg Polled Herefords, Jackson, MO; Butler Polled Herefords, Republic, MO, Five J's Cattle Co, Clayton, NC. Homozygous polled.



Ref

CMF 333E HITCHING POST 648H

(CHB, DLF, HYF, IEF, MSUDF, MDF, DBF) P44203559 10/14/2020

EFBEEF TFL U208 TESTED X651 ET EFBEEF FOREMOST U208
INNISFAIL WHR X651/723 4013 ET
INNISFAIL P230 T723

EFBEEF P606 MABEL R415
EF F745 FRANK P230
INNISFAIL 235 R501 ET

GERBER ANODYNE 001A
CMF 59A ANN 333E
CMF 829S ANN 59A

KCF BENNETT 9126J R294
GERBER 627S HOLLY 096Y
MSU TCF REVOLUTION 4R
CMF 490J ANN 829S



Act BW		Adj WW		Adj YW		Adj IMF		Adj REA		Adj FAT	
73		827		1389		4.28		15.86		0.36	
CED	BW	WW	YW	SC	SCF	Milk	M&G	Uddr	Teat	REA	Marb
3.7	3.3	78	126	1.8	15.1	23	63	1.3	1.2	0.45	0.45

We purchased Hitching Post to add carcass and maternal value while maintaining phenotype and performance. We are very pleased with his progeny. Unfortunately this bull is deceased, and his semen will be limited to the owners, so the only way to acquire his genetics is to purchase his offspring. Owned with Candy Meadow Farms, Lexington, TN, Steinbeck Farms, Hermann, MO. Homozygous polled.



REFERENCE SIRES



Ref

FTF CONFIDENCE 6113D

(DLF, HYF, IEF, MSUDF, MDF, DBF) P43751234 09/08/2016

HUTH PROSPECTOR K085
FTF PROSPECTOR 145Y
FTF CHICK A BOOM 7227T

RRH MR FELT 3008
HUTH 34A PAULA 68F
FTF BOMBARDIER 309N
FTF LEANNA 480P

TH 122 71I VICTOR 719T
FTF VERONICA 4107B
FTF MS REVOLUTION 2424Z

DRF JWR PRINCE VICTOR 711
KBCR 19D DOMINETTE 122
MSU TCF REVOLUTION 4R
JR MISS RIGHT 950J



Act BW		Adj WW		Adj YW		Adj IMF		Adj REA		Adj FAT	
58		711		1234		3.40		10.79		0.15	
CED	BW	WW	YW	SC	SCF	Milk	M&G	Uddr	Teat	REA	Marb
2.5	1.9	69	115	0.9	24.5	29	64	1.2	1.3	0.27	0.21

Confidence brings a highly proven and respected pedigree. He's fully pigmented, goggle eyed, red legged and has unsurpassed body and style. His dam is one of our highest producing cows in the herd with 5 calves at 116.2 WWR. He sires moderate BW, breed-leading WW & YW, and adds frame, volume and length. His maternal predictability is unmatched with 4 direct DODs. Trait leader for WW, YW, SCF, M&G, CEM, BMI, BII and CHB.

Owned with Steinbeck Farms, Hermann, MO; marketed through BEEF-360. Homozygous polled.



Ref

FTF PRIME PRODUCT 226Z

(CHB, SOD, DLF, HYF, IEF) P43289496 01/12/2012

KCF BENNETT 3008 M326
SHF RIB EYE M326 R117
HVH MISS HUDSON 83K 8M

RRH MR FELT 3008
KCF MISS 459 F284
MSU MF HUDSON 19H
SUN VINDY MISS 83K

FTF CLASS ACT 629S
FTF CLASSIC MISS 0206X
FTF ENYA 303N

DR WORLD CLASS 517 10H
FTF CANDACE 022K
HUTH ENHANCER 2D
FTF CANDACE 143L



Act BW		Adj WW		Adj YW		Adj IMF		Adj REA		Adj FAT	
72		743		1189		5.31		12.15		0.29	
CED	BW	WW	YW	SC	SCF	Milk	M&G	Uddr	Teat	REA	Marb
0.6	1.6	61	95	1.7	15.5	38	68	1.2	1.1	0.66	0.46

Prime Product does so many things well in terms of growth and efficiency. He served as a Reference Sire in the Olsen Ranch Test and blew away the competition on average daily gain and adjusted feed per gain. Trait leader for SC, Milk, M&G, CEM, CW, FAT, Marb, BMI, BII and CHB. Deceased. Owned with Truman Farms, Prescott, IA; marketed through BEEF-360.



Ref

FTF RELEVANT 831F

(DLF, HYF, IEF, MDF, DBF) P43911639 01/16/2018

EFBEEF FOREMOST U208
EFBEEF TFL U208 TESTED X651 ET
EFBEEF P606 MABEL R415

FELTONS SOUNDER 957
EFBEEF G824 KATE S610 ET
EF SCHU-LAR N106 OF 009K 434V
EF G824 MABEL N174

MSU TCF REVOLUTION 4R
FTF MS REVOLUTION 626D
OVF PRETTY MISS 702T

FELTONS LEGEND 242
MSU TCF RACHAEL ET 54N
FTF ENHANCER 540R
OVF MADELINE ROSE 504R



Act BW		Adj WW		Adj YW		Adj IMF		Adj REA		Adj FAT	
66		756		1191		3.52		14.72		0.39	
CED	BW	WW	YW	SC	SCF	Milk	M&G	Uddr	Teat	REA	Marb
14.9	-5.3	50	71	1.1	26.9	30	55	1.3	1.2	0.45	0.49

Relevant is one of the most complete heifer bulls in the breed from a balanced EPD standpoint. He has proven to be the best calving ease bull we have ever used at FTF. His dam, Ms Revolution 626D, is one of the best cows we have ever produced. His first daughters are in production here and are phenomenal. This bull is heavily used industry wide for heifer breeding projects.

Owned with BEEF-360, Brookfield, MO; Jordan Herefords, Warrenton, MO, Broken C Farms, Tebbets, MO. Homozygous polled.



COWS

FTF VIRGINIA 146J (DLF,HYF,IEF,MSUDF,DBP)
P44235544 01/18/2021



CE	BW	WW	YW	SC	SCF	Milk	M&G	UDDR	TEAT	REA	MARB
4.6	3.5	58	95	1.2	15.4	24	53	1.3	1.3	0.38	0.14

This 146J cow has been a front pasture cow around here for a long time. With built in calving ease, growth, and longevity she combines some of the best maternal lines we have ever produced.

Retaining ½ embryo interest.

41A Heifer calf, FTF Sandy 661P, born 1/21/26, 75 lbs, sired by Loewen Sandhill L70 ET

Lot 41 **FTF VIRGINIA 146J**
(DLF,HYF,IEF,MSUDF,DBP) P44235544 01/18/2021

TH 122 71I VICTOR
FTF VALUE ADDED 556C
FTF MS PROSPECT 377A

DRF JWR PRINCE VICTOR 71I
KBCR 19D DOMINETTE 122
FTF PROSPECTOR 145Y
FTF LINDY 763T

FTF REVOLUTION 2429Z ET
FTF ROSALINDA 756E
FTF SONNET 012X

MSU TCF REVOLUTION 4R
JR MISS RIGHT 950J
GRANDVIEW 7OAKS SONORA 145R
FTF LEANNA 454P



CED	BW	WW	YW	SC	SCF	Milk	M&G	Uddr	Teat	REA	Marb
4.4	3.5	57	95	1.2	15.2	23	51	1.30	1.30	0.38	0.14



FTF ROSALINDA 756E
Dam of Lot 41



FTF VALUE ADDED 556C
Sire of Lot 41, 42, and 45
Owned with Wild Horse Hill Ranch,
Boynton, OK



COWS



lot 42

FTF VIRGINIA 106J

{DLF,HYF,IEF,MSUDF,DBP} P44235457 01/10/2021

TH 122 71I VICTOR 719T
FTF VALUE ADDED 556C
FTF MS PROSPECT 377A

DRF JWR PRINCE VICTOR 711
KBCR 19D DOMINETTE 122
FTF PROSPECTOR 145Y
FTF LINDY 763T

HUTH FTF TORQUE C002
FTF TONYA 876F
FTF MS PROSPECTOR 413B

SHF YORK 19H Y02
HUTH T013 DOMINETTE 2016
FTF PROSPECTOR 145Y
FTF MISS REVOLUTION 102Y



CED	BW	WW	YW	SC	SCF	Milk	M&G	Uddr	Teat	REA	Marb
5.8	1.4	54	88	1.8	16.7	21	48	1.40	1.40	0.14	0.10

106J is a dark red and neatly uddered female that is loaded with female quality. Her yearling bull sells as Lot 19 and is a sure representative of the quality she can produce.

42A Heifer calf, FTF Bailey 611P, born 1/13/26, 75 lbs, sired by Huth LHF Badger K021.



lot 43

FTF TORY 161J

{DLF,HYF,IEF,MSUDF,DBP} P44235559 01/25/2021

HUTH FTF TORQUE C002
FTF TORQUE 937G
FTF MS REVOLUTION 4320B

SHF YORK 19H Y02
HUTH T013 DOMINETTE 2016
MSU TCF REVOLUTION 4R
FTF CLASSIC BEAUTY 907W

FTF PORTERHOUSE 455B
FTF PROMISE 9209G
FTF DURA LENA 113Y

FTF PROSPECTOR 145Y
FTF VERONICA 227Z
THM DURANGO 4037
FTF ELENA 048K



CED	BW	WW	YW	SC	SCF	Milk	M&G	Uddr	Teat	REA	Marb
8.6	-0.1	54	87	0.9	19.4	23	51	1.30	1.30	0.29	-0.03

Dark red and very deep 161J has an outstanding EPD profile and has produced some quality replacement females for us. Her paternal sister was selected as pick of the 3 year olds from the National Sale that was selected by Mendonte Highlands Polled Hereford in Canada.

Pasture exposed to FTF Masterplan 1707J from 4/14/25 to 6/7/25 and to FTF Bandit 3728L as well as FTF Distinct 3715L (running together) from 6/10/25-7/14/25. Will likely need DNA test to determine sire.



lot 44

FTF CONNIE 1224J

{DLF,HYF,IEF,MSUDF,DBP} P44235501 01/31/2021

FTF PROSPECTOR 145Y
FTF CONFIDENCE 6113D
FTF VERONICA 4107B

HUTH PROSPECTOR K085
FTF CHICK A BOOM 7227T
TH 122 71I VICTOR 719T
FTF MS REVOLUTION 2424Z

FTF PRIME PRODUCT 226Z
FTF MS PROSPECTOR 520C
FTF MS REVOLUTION 2312Z

SHF RIB EYE M326 R117
FTF CLASSIC MISS 0206X
MSU TCF REVOLUTION 4R
FTF FAITH 644S



CED	BW	WW	YW	SC	SCF	Milk	M&G	Uddr	Teat	REA	Marb
4.2	0.5	60	100	1.2	25.6	38	68	1.00	1.10	0.44	0.32

1224J is dark red, attractive, and loaded with Dams of Distinction in her pedigree. She has a strong maternal pedigree including the great multiple trait bulls such as Prospector 145, 719T, Prime Product, and Revolution.

Pasture exposed to FTF Masterplan 1707J from 4/14/25 to 6/7/25 and to FTF Bandit 3728L as well as FTF Distinct 3715L (running together) from 6/10/25-7/14/25. Will likely need DNA test to determine sire.



COWS

FTF VIRGINIA 144J {DLF,HYF,IEF,MSUDF}
P44235541 01/18/2021



CE	BW	WW	YW	SC	SCF	Milk	M&G	UDDR	TEAT	REA	MARB
-0.3	4.0	67	107	1.3	16.5	32	66	1.3	1.3	0.50	0.15

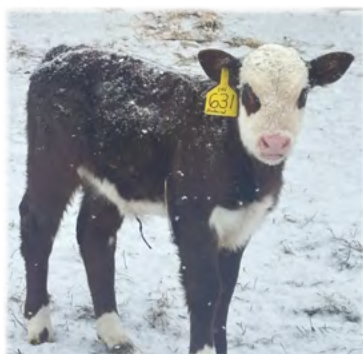
It is really hard to make them any better than this pair and I hate to see them go, but selling the heifer calf pairs on the 5 year old spring calvers is the program. 144J is goggle eyed, structurally correct, good feet and legs, and from a pedigree that combines maternal and carcass strength. She will likely be a Dam of Distinction soon. Her calf is a knockout and will likely to be the first Profound calf to sell anywhere. Retaining ½ embryo interest on the cow and the calf. 45A Heifer calf, FTF Prairie 631P, born 1/16/26, 80 lbs, sired by /S Profound 44041 ET

lot 45

FTF VIRGINIA 144J
{DLF,HYF,IEF,MSUDF} P44235541 01/18/2021

<p>TH 122 71I VICTOR 719T FTF VALUE ADDED 556C FTF MS PROSPECT 377A</p> <p>EFBEEF TFL U208 TESTED X651 ET FTF TESS 8215F FTF CLASSY LADY 134Y</p>	<p>DRF JWR PRINCE VICTOR 71I KBCR 19D DOMINETTE 122 FTF PROSPECTOR 145Y FTF LINDY 763T</p> <p>EFBEEF FOREMOST U208 EFBEEF P606 MABEL R415 DR WORLD CLASS 517 10H OVF PRETTY MISS 702T</p>
---	---

AHA GE-EPD											
CED	BW	WW	YW	SC	SCF	Milk	M&G	Uddr	Teat	REA	Marb
-0.3	4.0	67	107	1.3	16.5	32	66	1.30	1.30	0.49	0.15



FTF Prairie 631P
Daughter of Lot 45



FTF Hugh 343L
Maternal Brother to Lot 45



FTF Hugh 343L
Owned with Wild Horse Hill
Ranch, Boynton, OK

COWS



FTF
lot 46

FTF CONNIE 172J
{DLF,HYF,IEF,MSUDF,MDF,DBP} P44218304 01/29/2021

FTF PROSPECTOR 145Y
FTF CONFIDENCE 6113D
FTF VERONICA 4107B

MSU TCF REVOLUTION
FTF MS REVOLUTION 626D
OVF PRETTY MISS 702T

HUTH PROSPECTOR K085
FTF CHICK A BOOM 7227T
TH 122 711 VICTOR 719T
FTF MS REVOLUTION 2424Z

FELTONS LEGEND 242
MSU TCF RACHAEL ET 54N
FTF ENHANCER 540R
OVF MADELINE ROSE 504R



CED	BW	WW	YW	SC	SCF	Milk	M&G	Uddr	Teat	REA	Marb
9.2	-2.3	50	81	0.2	25.1	33	59	1.30	1.30	0.27	0.33

172J has been a really good producer for our program and has great structure and udder quality. She is very predictable as she is a Confidence daughter out of Relevant's mother. Pasture exposed to FTF Masterplan 1707J from 4/14/25 to 6/7/25 and to FTF Bandit 3728L as well as FTF Distinct 3715L (running together) from 6/10/25-7/14/25. Will likely need DNA test to determine sire.



FTF
lot 47

FTF PARIS 1228J
{DLF,HYF,IEF,MSUDF,MDP} P44282780 03/01/2021

EFBEEF BR VALIDATED B413
EFBEEF B413 PRIMESTOCK E007
EFBEEF 6378 KATE W484

NJW 73S W18 HOMETOWN 10Y
FTF HOMETOWN HONEY 4225B
FTF ROSE RANGER 018X

EFBEEF TFL U208 TESTED X651 ET
EFBEEF 4R THYRA Y865
R&R PRIME CUT 6378 ET
EFBEEF G825 KATE R428

SHF WONDER M326 W18 ET
NJW P606 72N DAYDREAM 73S
RF TIME IS RIGHT 53S
FTF LADY RANGER 7101T



CED	BW	WW	YW	SC	SCF	Milk	M&G	Uddr	Teat	REA	Marb
3.3	3.6	53	90	1.6	19.2	32	58	1.20	1.20	0.70	0.76

This Primestock daughter is out of the great 4225 Dam of Distinction that has done so well for us. She is well marked, neatly designed, has tremendous carcass EPD and a huge CHB index. Her son, FTF Houston 551N, sells as Lot 32. Pasture exposed to FTF Masterplan 1707J from 4/14/25 to 6/7/25 and to FTF Bandit 3728L as well as FTF Distinct 3715L (running together) from 6/10/25-7/14/25. Will likely need DNA test to determine sire.



FTF
lot 48

FTF PROMISE 1422J
P44235528 12/30/2020

FTF PROSPECTOR 145Y
FTF PORTERHOUSE 455B
FTF VERONICA 227Z

FTF GARRETT 020X
FTF GINGER 480B
FTF FABULOUS 2217Z

HUTH PROSPECTOR K085
FTF CHICK A BOOM 7227T
TH 122 711 VICTOR 719T
FTF FABULOUS 097X

CMR TF 242 GARRETT 430
FTF PRINCESS 842U
FTF M326 FABRICATOR 838U
FTF LEANNA 642S



CED	BW	WW	YW	SC	SCF	Milk	M&G	Uddr	Teat	REA	Marb
5.7	1.2	64	107	1.4	17.2	31	63	1.10	1.10	0.39	0.10

1422J is a moderate sized cow that absolutely gives it all to her calves year after year. She is a maternal sister to the dam of Magnifico and is loaded with Dam's of Distinction, including her dam and both grandmothers. Her yearling son, FTF Redskin 548N, is a feature and sells as Lot 11. 48A Heifer calf, FTF Rae 653P, born 1/20/26, 69 lbs, sired by ASM 405B Red Man 325L ET.

COWS

BR CONNIE 1225J

P44235502 02/01/2021



CE	BW	WW	YW	SC	SCF	Milk	M&G	UDDR	TEAT	REA	MARB
-0.4	1.3	59	101	1.3	19.1	21	51	1.3	1.4	0.21	0.29

1225J is an eye catching Confidence daughter whose mother, FTF Valentine 595C, was the foundation for Ben and Madi's herd. She offers performance with udder quality and style. Her Walker Full Circle heifer is dynamite. Her son, BR Equity 572N, sells as Lot 16. Owned by Ben Ridder.

49A Heifer calf, BR Freya 666P, born 1/22/26, 82 lbs, sired by Walker Full Circle 3511ET

FTF
lot 49

BR CONNIE 1225J
{DBP} P44235502 02/01/2021

FTF PROSPECTOR 145Y
FTF CONFIDENCE 6113D
FTF VERONICA 4107B

FTF VALUE ADDED 369A
FTF VALENTINE 595C
FTF SONNET 259Z

HUTH PROSPECTOR K085
FTF CHICK A BOOM 7227T
TH 122 711 VICTOR 719T
FTF MS REVOLUTION 2424Z
TH 122 711 VICTOR 719T
FTF FABULOUS 181Y
GRANDVIEW 7OAKS SONORA 145R
FTF GARDEN PRINCESS 903W



CED	BW	WW	YW	SC	SCF	Milk	M&G	Uddr	Teat	REA	Marb
-0.4	1.3	59	101	1.3	19.1	21	51	1.30	1.40	0.21	0.29



BR TONYA 093H
Maternal sister to Lot 49



FTF SONNETT 259Z
Grandam of Lot 49



FTF GARDEN PRINCESS 903W
Great Grandam of Lot 49



COWS



lot 50

MR MS FRONTIER 160J

{DBP} P44235558 01/23/2021

TH 403A 475Z PIONEER 358C TH 89T 755T STOCKMAN 475Z
 TH FRONTIER 174E TH 71U 17Y RITA 403A
 FTF TRUSTING LADY 312A NJW 73S M326 TRUST 100W ET
 FTF BOOM AND BLOOM 8211U

FTF PROSPECTOR 145Y HUTH PROSPECTOR K085
 MR MS PROSPECTOR 858F FTF CHICK A BOOM 7227T
 FTF VALENTINE 595C FTF VALUE ADDED 369A
 FTF SONNET 259Z



CED	BW	WW	YW	SC	SCF	Milk	M&G	Uddr	Teat	REA	Marb
0.2	3.5	73	119	1.7	14.5	43	79	1.20	1.20	0.47	0.06

The 160 cow comes from the same cow family as Lot 49. Tremendous udder quality and always puts it in her calves. Her dam is a Dam of Distinction and she will likely be a Dam of Distinction by sale day as well. She has an average weaning weight ratio of 109 on her first 3 calves. Owned by Madi Ridder.

50A Heifer calf, MR Freya 670P, born 1/25/26, 83 lbs, sired by Walker Full Circle 3511ET.



lot 51

FTF PARIS 167J

{DLF,IEF,HYP,MSUDF} P44235562 01/28/2021

EFBEEF BR VALIDATED B413 EFBEEF TFL U208 TESTED X651 ET
 EFBEEF B413 PRIMESTOCK E007 EFBEEF 4R THYRA Y865
 EFBEEF 6378 KATE W484 R&R PRIME CUT 6378 ET
 EFBEEF G825 KATE R428

FTF BONUS 678S FTF BOMBARDIER 309N
 OVF BONITA 8136U FTF SOPRANO 212M
 OVF SARAH ROSE FTF RIGHT TIME 178L
 OVF KENTUCKY ROSE



CED	BW	WW	YW	SC	SCF	Milk	M&G	Uddr	Teat	REA	Marb
3.0	3.1	61	106	1.1	20.6	31	61	1.20	1.20	0.62	0.55

EFBEEF B413 E007 ET Sire of Lot 51

Lots of fleshing ability and udder quality on this Primestock daughter. Her dam descends from the Rose 953Y cow family which is the same family that produced Relevant, Untouchable, and this years Lot 1, FTF Prototype 502N.

Pasture exposed to FTF Anchor 381L and FTF Hitch 373L from 4/14/25 to 7/15/25. Will likely need DNA test to determine sire.



lot 52

FTF TONYA 1219J

P44235495 01/21/2021

SHF YORK 19H Y02 MSU MF HUDSON 19H
 HUTH FTF TORQUE C002 LOEWEN MISS P20 10W
 HUTH T013 DOMINETTE 2016 UPS DOMINO 3027
 HUTH R007 VERA T013

FTF BOOMER 29F 551R CS BOOMER 29F
 FTF BOOM AND BLOOM 291Z FTF MISS RIGHT 031K
 FTF CHICK A BOOM 7227T FTF BOMBARDIER 309N
 FTF LEANNA 480P



CED	BW	WW	YW	SC	SCF	Milk	M&G	Uddr	Teat	REA	Marb
2.0	2.3	62	104	1.8	18.1	21	52	1.40	1.40	0.44	-0.12

1219J is a productive Torque daughter whose mother is a maternal sister to FTF Prospector 145Y. She has an excellent Full Circle heifer calf.

52A Heifer calf, FTF Freya 654P, born 1/20/26, 77 lbs, sired by Walker Full Circle 3511ET.



COWS



lot 53

FTF MISS PROFIT 0207H

{HYP,DBP} P44123224 12/17/2019

FTF PRIME PRODUCT 226Z
FTF PRIME PRODUCT 513C
FTF MS CLASSIC 241Z

SHF RIB EYE M326 R117
FTF CLASSIC MISS 0206X
MSU TCF REVOLUTION 4R
FTF CLASSY LADY 915W

FTF M326 050X
FTF FLIRTATIOUS 2301Z
FTF CHICK A BOOM 885U

KCF BENNETT 3008 M326
FTF LEANNA 648S
FTF BOMBARDIER 309N
FTF SOPRANO 212M



CED	BW	WW	YW	SC	SCF	Milk	M&G	Uddr	Teat	REA	Marb
6.6	0.1	50	75	1.4	11.6	26	51	1.40	1.30	0.27	0.29

0207H is a big bodied neatly uddered 6 year old that has left her mark in our herd. She is a calving ease and carcass specialist. Her two yearling bulls that we raised and sold in the past, average IMF ratio of 106.5. Pasture exposed to FTF Masterplan 1707J from 4/14/25 to 6/7/25 and to FTF Bandit 3728L as well as FTF Distinct 3715L (running together) from 6/10/25-7/14/25. Will likely need DNA test to determine sire.



lot 54

FTF CONNIE 1221J

{DLF,HYF,IEF,MSUDF,DBP} P44235498 01/27/2021

FTF PROSPECTOR
FTF CONFIDENCE 6113D
FTF VERONICA 4107B

HUTH PROSPECTOR K085
FTF CHICK A BOOM 7227T
TH 122 711 VICTOR 719T
FTF MS REVOLUTION 2424Z

TH 122 711 VICTOR
FTF VERONICA 414B
FTF SONNET 2208Z

DRF JWR PRINCE VICTOR 711
KBCR 19D DOMINETTE 122
GRANDVIEW 70AKS SONORA 145R
FTF TRENA 570R



CED	BW	WW	YW	SC	SCF	Milk	M&G	Uddr	Teat	REA	Marb
7.6	-0.5	53	86	0.9	26.7	23	50	1.30	1.40	0.31	0.05

**FTF VERONICA 414B
Dam of Lot 54**

1221J is a well made Confidence daughter whose dam is a 12-year-old Dam of Distinction. 1221J is the mother of my favorite Magnifico daughter that is picture perfect. Pasture exposed to FTF Masterplan 1707J from 4/14/25 to 6/7/25 and to FTF Bandit 3728L as well as FTF Distinct 3715L (running together) from 6/10/25-7/14/25. Will likely need DNA test to determine sire.



lot 55

RMB B413 SOUTHERN BELLE 931J

{DLF,HYF,IEF,MSUDF} P44219405 02/02/2021

NJW 79Z Z311 ENDURE 173D
INNISFAIL ENDORSE 4021 1838 ET
INNISFAIL 723 U208 4021 ET

KCF BENNETT ENCORE Z311 ET
BW 91H 100W RITA 79Z ET
EFBEEF TFL U208 TESTED X651 ET
INNISFAIL P230 T723

TH 13Y 358C BOTTOM LINE 206E
DESTIN SUNNY 206E U99 ET
CPH SUNNY 100W K187

TH 403A 475Z PIONEER 358C ET
TH 54W 719T BETH 13Y
NJW 73S M326 TRUST 100W ET
MOHICAN SUNNY 43P



CED	BW	WW	YW	SC	SCF	Milk	M&G	Uddr	Teat	REA	Marb
4.2	4.4	70	106	0.9	21.0	25	59	1.40	1.40	1.16	0.20

931J would represent the last female we purchased before we made the decision to become a closed herd. This Southern Belle was our pick at the Barnes Hereford Sale in 2022. Freckle faced with a great udder, she records an average weaning weight ratio of 112. Pasture exposed to FTF Masterplan 1707J from 4/14/25 to 6/7/25 and to FTF Bandit 3728L as well as FTF Distinct 3715L (running together) from 6/10/25-7/14/25. Will likely need DNA test to determine sire.



BRED HEIFERS



BAR JZ ON DEMAND {DLF,HYF,IEF,MSUDF,MDF,DBF}
P44355795 03/26/2022

Sire of Lot 56



lot 56

FTF OLIVIA 4716M

{DLF,HYF,IEF,MSUDF,MDF,DBF} P44627268 08/26/2024

RV VALOR 9444G
BAR JZ ON DEMAND
BAR JZ HANNAH 087B

JDH VICTOR 719T 33Z ET
RV BOBBI 1404
NJW 73S W18 HOMEGROWN 8Y
BAR JZ VIRGINIA 347Y

HUTH FTF TORQUE C002
FTF TONYA 0302H
DOSS FTF106 A CAITLYN DHC 47ET

SHF YORK 19H Y02
HUTH T013 DOMINETTE Z016
MHPH 521X ACTION 106A
KCF MISS 3008 N344



CED	BW	WW	YW	SC	SCF	Milk	M&G	Uddr	Teat	REA	Marb
9.0	1.0	72	103	1.6	21.3	15	51	1.30	1.40	0.48	0.36

This On Demand daughter combines EPD's with a very desirable phenotype. Her dam is an easy fleshing, perfectly uddered Torque daughter. They descend from the N344 cow family which also produced KCF Bennett 3008 R294 who later sired Gerber Anodyne. Retaining 1/2 embryo interest. Bred AI on 11/24/25 to FTF Washington 449M and pasture exposed to FTF On Demand 4714M from 11/27/25- 2/15/26.

lot 57

FTF DESTINY 4508M

{DLF,HYF,IEF,MSUDF,MDF,DBF} P44627251 08/21/2024

NJW 160B 028X HISTORIC 81E
H B DISTINCT
H DS MISS SPICE 8082

CHURCHILL SENSATION 028X
NJW 73S 38W DAYDREAM 160B
LCX PERFECTO 11B ET
H BL MISS SPICE 613 ET

TH FRONTIER 174E
FTF MS FRONTIER 9462G ET
FTF MS PROSPECT 397A

TH 403A 475Z PIONEER 358C ET
FTF TRUSTING LADY 312A
FTF PROSPECTOR 145Y
FTF CLASSY LADY 624S



CED	BW	WW	YW	SC	SCF	Milk	M&G	Uddr	Teat	REA	Marb
5.0	1.9	72	113	1.5	16.1	31	67	1.50	1.60	0.65	0.21

4508 is a high performing Distinct daughter out of a Dam of Distinction. She will be quite a keeper.

Bred AI on 11/24/25 to FTF Washington 449M and pasture exposed to FTF On Demand 4714M from 11/27/25- 2/15/26.

lot 58

FTF PREDICTABLE 4506M

{DLF,HYF,IEF,MSUDF,MDF,DBF} P44627250 08/19/2024

INNISFAIL WHR X651/723 4013
CMF 333E HITCHING POST 648H
CMF 59A ANN 333E

EFBEEF TFL U208 TESTED X651 ET
INNISFAIL P230 T723
GERBER ANODYNE 001A
CMF 829S ANN 59A

FTF HUMDINGER 4303B
FTF MS HUMDINGER 6460D
FTF MISS REVOLUTION 2373Z

FTF RIB EYE 153Y
FTF MISS REVOLUTION 119Y
MSU TCF REVOLUTION 4R
FTF MISS RIGHT 501R



CED	BW	WW	YW	SC	SCF	Milk	M&G	Uddr	Teat	REA	Marb
0.9	2.5	61	108	1.3	13.2	20	50	1.20	1.20	0.50	0.51

Quite a big bodied high volumed Hitching Post daughter. Her mother is also a Dam of Distinction.

Bred AI on 11/24/25 to /S Profound 44041 ET and pasture exposed to FTF On Demand 4714M from 11/27/25- 2/15/26.

lot 59

FTF COLORADO QUEEN 4515M

{DLF,HYF,IEF,MSUDF,MDF,DBF} P44627256 09/13/2024

APH 4356 COLORADO 15G
FTF COLORADO 1510J
FTF MS PROSPECTOR 609D

R EXCITEMENT 4356
CPH 10Y WYNNE 14B
FTF PROSPECTOR 145Y
FTF MS REVOLUTION 4407B

FTF PROSPECTOR 145Y
FTF MS PROSPECTOR 6422D
FTF WHATS COOKIN? 490B

HUTH PROSPECTOR K085
FTF CHICK A BOOM 7227T
FTF RIB EYE 153Y
FTF MISS REVOLUTION 172Y



CED	BW	WW	YW	SC	SCF	Milk	M&G	Uddr	Teat	REA	Marb
3.2	2.9	64	98	1.4	18.3	30	62	1.10	1.10	0.26	0.30

4515M is quite a performer and boasts a 112 weaning weight ratio. Her 10 year old Prospector mother still has one of the best udders in the fall herd.

Bred AI on 11/24/25 to Hoffman Richmond ET and pasture exposed to FTF On Demand 4714M from 11/27/25- 2/15/26.

lot 60

FTF ULTRA 4509M

{DLF,HYF,IEF,MSUDF,MDF,DBC} P44627252 08/21/2024

HUTH FTF TORQUE C002
FTF UNTOUCHABLE 046H
FTF ROSALINDA 573C

SHF YORK 19H Y02
HUTH T013 DOMINETTE Z016
FTF REVOLUTION 2429Z ET
OVF PRETTY MISS 702T

FTF PORTERHOUSE 455B
FTF PROMISE 9209G
FTF DURA LENA 113Y

FTF PROSPECTOR 145Y
FTF VERONICA 227Z
THM DURANGO 4037
FTF ELENA 048K



CED	BW	WW	YW	SC	SCF	Milk	M&G	Uddr	Teat	REA	Marb
6.4	0.7	65	109	1.4	24.7	30	63	1.40	1.40	0.33	0.21

Red eyed and high performing, this Untouchable daughter sports a 115 weaning ratio and still is among the most impressive bred heifers in the pen.

Bred AI on 11/24/25 to /S Profound 44041 ET and pasture exposed to FTF On Demand 4714M from 11/27/25- 2/15/26.



BRED HEIFERS



FTF MS HOMELAND 927G {DOD,DLF,HYF,IEF,MSUDF,DBF}
P44001614 01/16/19

Dam of Service Sire, FTF Washington 449M



lot 61

FTF MAGDALENA 4731M
{DLF,HYF,IEF,MSUDF,MDF,DBF} P44627278 09/18/2024

TH MASTERPLAN 183F
FTF MASTERPLAN 1705J
FTF CLASSY LADY 7615E ET

KCF BENNETT STRATEGY Z303 ET
TH 512X 145Y DOMINETTE 57B
DR WORLD CLASS 517 10H
FTF TRENA 366N

EFBEEF B413 PRIMESTOCK E007 ET
FTF PARIS 1527J
FTF MS REVOLUTION 2424Z

EFBEEF BR VALIDATED B413
EFBEEF 6378 KATE W484
MSU TCF REVOLUTION 4R
JR MISS RIGHT 950J



CED	BW	WW	YW	SC	SCF	Milk	M&G	Uddr	Teat	REA	Marb
2.1	3.1	64	109	1.3	17.6	21	53	1.30	1.30	0.62	0.50

4731M is such a beauty. Her combination of maternal strength and carcass traits should make her quite a breeding piece. Her Primestock mother is a nice young cow and is a maternal sister to the dam of FTF Confidence 6113D. Retaining ½ embryo interest. Bred AI on 11/24/25 to Hoffman Richmond and pasture exposed to FTF On Demand 4714M from 11/27/25- 2/15/26.

lot 62

FTF MAISIE 4737M
{DLF,HYF,IEF,MSUDF,MDF,DBF} P44621790 10/13/2024

TH MASTERPLAN 183F
FTF MASTERPLAN 1705J
FTF MS HUMDINGER 8629F

KCF BENNETT STRATEGY Z303 ET
TH 512X 145Y DOMINETTE 57B
FTF HUMDINGER 4303B
FTF PRICELESS 4439B

FTF POWERHOUSE 9432G
FTF PRISCILLA 1528J {DBP}
FTF CLASSIC MISS 0206X

FTF PORTERHOUSE 455B
FTF MS REVOLUTION 4226B
FTF CLASS ACT 629S
FTF ENYA 303N



CED	BW	WW	YW	SC	SCF	Milk	M&G	Uddr	Teat	REA	Marb
9.4	-1.7	37	62	0.5	23.3	33	51	1.20	1.20	0.12	0.26

4737M has a strong calving ease and maternal pedigree. Her dam is a maternal sister to FTF Prime Product 226Z. Bred AI on 11/24/25 to /S Profound 44041 ET and pasture exposed to FTF On Demand 4714M from 11/27/25- 2/15/26.

lot 61

FTF MAISIE 4741M
{DLF,HYF,IEF,MSUDF,MDF,DBF} P44627283 10/24/2024

TH MASTERPLAN 183F
FTF MASTERPLAN 1705J
FTF MS HUMDINGER 8629F

KCF BENNETT STRATEGY Z303 ET
TH 512X 145Y DOMINETTE 57B
FTF HUMDINGER 4303B
FTF PRICELESS 4439B

H B DISTINCT
FTF DESTINY 2718K
FTF VERONICA 4107B

NJW 160B 028X HISTORIC 81E ET
H DS MISS SPICE 8082
TH 122 711 VICTOR 719T
FTF MS REVOLUTION 2424Z



CED	BW	WW	YW	SC	SCF	Milk	M&G	Uddr	Teat	REA	Marb
5.1	2.6	66	109	1.5	15.3	21	54	1.40	1.40	0.40	0.24

4741M would be among the youngest heifers in this group but one of the highest quality. Her grandmother 4107 is a DOD and the dam of FTF Confidence 6113D. Combined with the fleshing ability and maternal strength of Distinct and Masterplan, 4741M should rise to the top. Retaining ½ embryo interest. Bred AI on 11/24/25 to FTF Washington 449M and pasture exposed to FTF On Demand 4714M from 11/27/25- 2/15/26.

lot 63

FTF MAISIE 4735M
{DLF,HYF,IEF,MSUDF,MDF,DBF} P44621789 09/19/2024

TH MASTERPLAN 183F
FTF MASTERPLAN 1705J
FTF MS HUMDINGER 8629F

KCF BENNETT STRATEGY Z303 ET
TH 512X 145Y DOMINETTE 57B
FTF HUMDINGER 4303B
FTF PRICELESS 4439B

FTF PREVIEW 542C
FTF MO PRINCESS 019H
FTF VALENTINE 697D

FTF PRINCE LEE 925W
FTF GINGER 396A
FTF VALUE ADDED 369A
FTF MS PROSPECT 374A



CED	BW	WW	YW	SC	SCF	Milk	M&G	Uddr	Teat	REA	Marb
11.0	-1.2	53	86	1.5	20.9	25	52	1.30	1.30	0.02	0.11

Loaded with calving ease and maternal strength 4735M's pedigree is full of top end FTF cows including 8629, 396, and 697. Bred AI on 11/24/25 to FTF Washington 449M and pasture exposed to FTF On Demand 4714M from 11/27/25- 2/15/26.

lot 64

FTF MAISIE 4739M
{DLF,HYF,IEF,MSUDF,MDF,DBF} P44627281 10/17/2024

TH MASTERPLAN 183F
FTF MASTERPLAN 1705J
FTF MS HUMDINGER 8629F

KCF BENNETT STRATEGY Z303 ET
TH 512X 145Y DOMINETTE 57B
FTF HUMDINGER 4303B
FTF PRICELESS 4439B

FTF POWERHOUSE 6457D
FTF PIPER 9711G
FTF QUALITY QUEEN 5458C

FTF PORTERHOUSE 455B
FTF FLIRTATIOUS 2430Z
FTF QUALITY BEEF 330A
FTF FLIRTATIOUS 2423Z



CED	BW	WW	YW	SC	SCF	Milk	M&G	Uddr	Teat	REA	Marb
3.0	1.3	53	81	1.1	12.7	14	41	1.30	1.20	0.41	0.29

Here is a well balanced female with eye appeal. Her maternal grandmother and paternal grandmother are two of the best cows at our Montgomery City farm. Bred AI on 11/24/25 to FTF Washington 449M and pasture exposed to FTF On Demand 4714M from 11/27/25- 2/15/26.



BRED HEIFERS



FTF
lot 66

FTF MAGDALENA 4516M

{DLF,HYF,IEF,MSUDF,MDF,DBF} P44627257 09/20/2024

TH MASTERPLAN 183F
FTF MASTERPLAN 1707J
FTF CLASSY LADY 7615E ET

KCF BENNETT STRATEGY Z303 ET
TH 512X 145Y DOMINETTE 57B
DR WORLD CLASS 517 10H
FTF TRENA 366N

R LEADER 6964
FTF LEADING LADY 028H
FTF VALENTINE 758E

HYALITE ON TARGET 936
R MISS REVOLUTION 1009
FTF VALUE ADDED 369A
FTF GINGER 396A



CED	BW	WW	YW	SC	SCF	Milk	M&G	Uddr	Teat	REA	Marb
2.0	2.9	69	111	1.6	19.2	23	58	1.50	1.40	0.33	0.22

4516M has some great female makers in her pedigree including Masterplan, World Class, Leader, and Value Added 369. Should be no surprises here.

Bred AI on 11/24/25 to FTF Washington 449M and pasture exposed to FTF On Demand 4714M from 11/27/25- 2/15/26.

FTF VALENTINE 758E {DLF, HYF, IEF, MSUDF, DBP}
P43794645 01/30/17

Grandam of Lot 66

FTF
lot 67

FTF MS PROSPECTOR 4712M

{DLF,HYF,IEF,MSUDF,MDF,DBF} P44627265 08/24/2024

HUTH PROSPECTOR K085
FTF PROSPECTOR 145Y
FTF CHICK A BOOM 7227T

RRH MR FELT 3008
HUTH 34A PAULA 68F
FTF BOMBARDIER 309N
FTF LEANNA 480P

FTF PRIME PRODUCT 821F
FTF PRETTY CLASSY 192J
FTF ROSALINDA 8225F

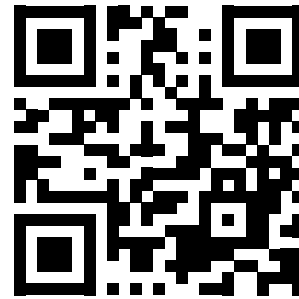
FTF PRIME PRODUCT 226Z
FTF CLASSY LADY 856U
FTF REVOLUTION 2429Z ET
FTF CLASSIC MISS 0203X



CED	BW	WW	YW	SC	SCF	Milk	M&G	Uddr	Teat	REA	Marb
1.0	2.0	56	87	1.1	16.6	33	61	1.20	1.20	0.22	0.30

4712M is a big and broody Prospector 145Y daughter out of a top end Prime Product 821 cow. Pigmented and feminine, this 145Y daughter is a blast from the past.

Bred AI on 11/24/25 to H B Distinct and pasture exposed to FTF On Demand 4714M from 11/27/25- 2/15/26.



view videos online @

www.fallingtimberfarm.com



"Being a true cattle breeder isn't just about breeding for numbers or phenotype. It's about really knowing the cattle for many generations and recognizing the strengths and weaknesses and then breeding accordingly." - John Ridder



BRED HEIFERS



lot 68
a, b, c

F1 BLACK BALDY BRED HEIFERS

Lot 68A - Ear tag # 4514 - F1 black baldy out of registered parents, FTF Colorado 1510J x FTF Confidence Miss 7096E. Born 9/9/24. BW 75.

Bred AI on 11/24/25 to Maplecrest Masterclass (AN) and pasture exposed to FTF On Demand 4714M from 11/27/25- 2/15/26.

Lot 68B - Ear tag # 4728 - F1 black baldy out of registered parents, FTF Masterplan 1707J x DFA FTF Mayflower 224. Born 9/5/24. BW 70.

Bred AI on 11/24/25 to Maplecrest Masterclass (AN) and pasture exposed to FTF On Demand 4714M from 11/27/25- 2/15/26.

Lot 68C - Ear tag # 4732 - F1 black baldy out of registered parents, FTF Masterplan 1707J x DFA Mayflower 702. Born 9/18/24. BW 70 lbs.

Bred AI on 11/24/25 to Maplecrest Masterclass (AN) and pasture exposed to FTF On Demand 4714M from 11/27/25- 2/15/26.

lot 69
a & b

SIM/ANGUS BRED HEIFERS

Lot 69A - Ear tag #4705 - SM/AN out of registered parents, HILB Oracle C033R x FTF Brilliance 0317H. Born 8/19/24. BW 68.

Bred AI on 11/24/25 to Maplecrest Masterclass (AN) and pasture exposed to FTF On Demand 4714M from 11/27/25- 2/15/26.

Lot 69B - Ear tag #4707 - SM/Angus out of registered parents, HILB Oracle C033R x DFA Mayflower 685. Born 8/21/24. BW 68.

Bred AI on 11/24/25 to Maplecrest Masterclass (AN) and pasture exposed to FTF On Demand 4714M from 11/27/25- 2/15/26.

MAPLECREST MASTERCLASS

AAA 20751537 03/18/2023

Service Sire of Lots 68 & 69



HILB ORACLE C0334

ASA 2993610 02/05/2015

Sire of Lot 69 a & b



SIM/ANGUS HEIFERS



BLACK BALDY HEIFER ear tag# 4514

SPRING HEIFERS



lot 70

FTF COLORADO QUEEN 577N

{DLF,HYF,IEF,MSUDF,MDF,DBF} P44646357 01/23/2025

APH 4356 COLORADO 15G
FTF COLORADO 1510J
FTF MS PROSPECTOR 609D

R EXCITEMENT 4356
CPH 10Y WYNNE 14B
FTF PROSPECTOR 145Y
FTF MS REVOLUTION 4407B

F FINAL TEST 722
FTF FINE LADY 127J
FTF VALENTINE 778E

EFBEEF TFL U208 TESTED X651 ET
F MS YORK 567
FTF VALUE ADDED 369A
FTF SWEET REVOLUTION 476B



CED	BW	WW	YW	SC	SCF	Milk	M&G	Uddr	Teat	REA	Marb
2.7	3.0	65	108	1.4	23.3	26	59	1.40	1.40	0.31	0.27

FTF FINE LADY 127J

P44235598 01/16/2021

Dam of Lot 70



Loaded with pigment and style 577 has the pedigree for growth and performance. Her grandam is a DOD and the mother of FTF Washington 449M.

lot 71

FTF MEREDITH 5217N

{DLF,HYF,IEF,MSUDF,MDF,DBF} P44646296 12/23/2024

JW X651 TESTED 1857
JW 1857 MERIT 21134
JW 33Z VICTORIA 19027

EFBEEF TFL U208 TESTED X651 ET
KCF MISS 22S A261
JDH VICTOR 719T 33Z ET
JW 028X DOMINETTE 1417

FTF REVOLUTION 126Y
FTF SWEET REVOLUTION 6221D
FTF TRENA 570R

MSU TCF REVOLUTION 4R
FTF BON BON 526R
4K TRENT G605 L32
FTF RITA 330N



CED	BW	WW	YW	SC	SCF	Milk	M&G	Uddr	Teat	REA	Marb
6.9	2.3	67	109	1.5	23.0	27	61	1.50	1.50	0.46	0.43

Outstanding EPD profile on this Merit daughter. Her mother is 10 years old and been a solid producer.

lot 72

FTF ENDOW 519N

{DLF,HYF,IEF,MSUDF,MDF,DBF} P44646278 01/13/2025

NJW 133A 6589 MANIFEST 87G ET
NJW 119E 87G ENDORSEMENT 216J
NJW 8B 164C LEXY 119E

/S MANDATE 66589 ET
BW NJW 76S 8Y HOMESPUN 133A
NJW 76S 88X CIRCLEBOSS 164C ET
NJW 149Z 10W LEXY 8B

CMF 333E HITCHING POST 648H
FTF PREDICTABLE 370L
FTF VIOLET 045H

INNISFAIL WHR X651/723 4013 ET
CMF 59A ANN 333E
FTF VALUE ADDED 433B
FTF PROMISE 667D



CED	BW	WW	YW	SC	SCF	Milk	M&G	Uddr	Teat	REA	Marb
11.8	-0.4	63	94	1.2	17.8	29	60	1.40	1.30	0.43	0.42

519N has lots of performance and great calving ease. Her mother is really a beautiful cow and among our oldest Hitching Post daughters.

lot 73

FTF ENDOW 550N

{DLF,HYF,IEF,MSUDF,MDF,DBF} P44646333 01/17/2025

NJW 133A 6589 MANIFEST 87G ET
NJW 119E 87G ENDORSEMENT 216J
NJW 8B 164C LEXY 119E

/S MANDATE 66589 ET
BW NJW 76S 8Y HOMESPUN 133A
NJW 76S 88X CIRCLEBOSS 164C ET
NJW 149Z 10W LEXY 8B

FTF FINAL TEST 9510G
FTF FAIR LADY 3229L
FTF DURA LENA 113Y

F FINAL TEST 722
FTF MS REVOLUTION 2424Z
THM DURANGO 4037
FTF ELENA 048K



CED	BW	WW	YW	SC	SCF	Milk	M&G	Uddr	Teat	REA	Marb
5.9	3.1	75	116	0.8	19.3	29	66	1.30	1.20	0.85	0.17

550N is a balanced heifer for EPD's and phenotype. Her two year old dam can really milk and 550N had a weaning weight ratio of 109.

lot 74

FTF MAGNOLIA 566N

{DLF,HYF,IEF,MSUDF,MDF,DBF} P44646347 01/20/2025

BG LCC 11B PERFECTO 84F
FTF MAGNIFICO 120J
FTF VALENTINE 877F

LCX PERFECTO 11B ET
BG 100W NICKY 31C
FTF VALUE ADDED 369A
FTF GINGER 480B

FTF RELEVANT 831F
FTF RILEY 333L
FTF PROMISE 1422J

EFBEEF TFL U208 TESTED X651 ET
FTF MS REVOLUTION 626D
FTF PORTERHOUSE 455B
FTF GINGER 480B



CED	BW	WW	YW	SC	SCF	Milk	M&G	Uddr	Teat	REA	Marb
10.2	-2.4	61	93	1.4	22.0	36	66	1.30	1.30	0.60	0.34

Quite a pedigree and EPD's for calving ease and maternal traits. Her grandmother sells as Lot 48 and her dam's maternal brother is a sale feature as lot 11.



SPRING HEIFERS



lot 75

FTF COLORADO QUEEN 588N

{DLF,HYF,IEF,MSUDF,MDF,DBF} P44646365 02/04/2025

APH 4356 COLORADO 15G
FTF COLORADO 1510J
FTF MS PROSPECTOR 609D

R EXCITEMENT 4356
CPH 10Y WYNNIE 14B
FTF PROSPECTOR 145Y
FTF MS REVOLUTION 4407B

FTF PREVIEW 542C
FTF MO PRINCESS 033H
FTF PROMISE 854F

FTF PRINCE LEE 925W
FTF GINGER 396A
FTF PORTERHOUSE 455B
FTF ROSALINDA 568C



CED	BW	WW	YW	SC	SCF	Milk	M&G	Uddr	Teat	REA	Marb
9.9	0.2	53	82	1.5	20.7	31	57	1.30	1.40	0.23	0.32

588N has a calving ease and maternal pedigree. Her grandsire 542C has produced us so many top end cows.

FTF MO PRINCESS 033H (HYP, DBP)
P44123259 01/16/2020

Grandam of Lot 75



lot 76

FTF MS PERFECTO 515N

{DLF,HYF,IEF,MSUDF,MDF,DBF} P44647736 01/13/2025

LCX PERFECTO 11B ET
BG LCC 11B PERFECTO 84F
BG 100W NICKY 31C

NJW 98S R117 RIBEYE 88X ET
WLL ZOEY 3Z
NJW 73S M326 TRUST 100W ET
BG MS DOMINO 90Z

CMF 333E HITCHING POST 648H
FTF PREDICTABLE 308L
FTF MISS PROFIT 0207H

INNISFAIL WHR X651/723 4013 ET
CMF 59A ANN 333E
FTF PRIME PRODUCT 513C
FTF FLIRTATIOUS 2301Z



CED	BW	WW	YW	SC	SCF	Milk	M&G	Uddr	Teat	REA	Marb
8.5	-0.5	57	88	0.7	17.7	34	63	1.30	1.30	0.29	0.08

This Perfecto 84F daughter is backed by an outstanding Hitching Post dam. Her grandmother sells as Lot 53.

lot 77

BR DAYTON 5107N

{DLF,HYF,IEF,MSUDF,MDF,DBF} P44646264 02/28/2025

H B DISTINCT
FTF DISTINCT 326L
FTF MS FRONTIER 0421H

NJW 160B 028X HISTORIC 81E ET
H DS MISS SPICE 8082
TH FRONTIER 174E
FTF CLASSY LADY 134Y

SHF HOUSTON D287 H086
BR WHITNEY 3208L
FTF VALENTINE 595C

SHF DAYBREAK Y02 D287 ET
SHF MISS 14 20Z D223
FTF VALUE ADDED 369A
FTF SONNET 259Z



CED	BW	WW	YW	SC	SCF	Milk	M&G	Uddr	Teat	REA	Marb
4.4	0.6	69	104	1.1	22.5	32	67	1.30	1.30	0.69	0.26

5107 is a goggle eyed royally bred female combining Distinct, Frontier, and Houston with the 595 cow. Owned by Ben Ridder.

lot 78

FTF SADI 541N

{DLF,HYF,IEF,MSUDF,MDF,DBF} P44646324 01/16/2025

KT SMALL TOWN KID 5051
RST 5051 SMALL TOWN KID 9023
RST MS 4180 REVOLUTION 7054

NJW 73S W18 HOMETOWN 10Y ET
KT MS 0124 TIMES A WASTIN 2086
RST X51 REVOLUTION 4180
RST MS X651 TESTED 5079

HUTH FTF TORQUE C002
FTF TONYA 1219J
FTF BOOM AND BLOOM 291Z

SHF YORK 19H Y02
HUTH T013 DOMINETTE Z016
FTF BOOMER 29F 551R
FTF CHICK A BOOM 7227T



CED	BW	WW	YW	SC	SCF	Milk	M&G	Uddr	Teat	REA	Marb
6.9	1.9	75	117	1.9	16.0	22	59	1.60	1.70	0.94	-0.06

541N is a growthy Small Town Kid. Her 5 year dam by Torque sells as Lot 52.

lot 79

FTF POLLY 5110N

{DLF,HYF,IEF,MSUDF,MDF,DBF} P44646268 03/16/2025

GERBER HIGH TIME H65
PF HIGH RISE 2301
FTF CLASSY LADY 7623E ET

GERBER CANAAN 041C
GERBER Z426 DIXIE E066
DR WORLD CLASS 517 10H
FTF TRENA 366N

EFBEEF B413 PRIMESTOCK E007 ET
FTF PARIS 167J
OVF BONITA 8136U

EFBEEF BR VALIDATED B413
EFBEEF 6378 KATE W484
FTF BONUS 678S
OVF SARAH ROSE



CED	BW	WW	YW	SC	SCF	Milk	M&G	Uddr	Teat	REA	Marb
4.2	1.1	54	86	1.3	26.0	33	60	1.30	1.30	0.66	0.21

Great pedigree combination of growth, maternal and carcass on this March heifer. Her dam sells as Lot 51.



SPRING HEIFERS



lot 80 **FTF MAGDALENA 5220N**
{DLF,HYF,IEF,MSUDF,MDF,DBF} P44646300 01/04/2025

TH MASTERPLAN 183F
FTF MASTERPLAN 1707J
FTF CLASSY LADY 7615E ET

HUTH FTF TORQUE C002
FTF TONYA 982G
FTF VALERIE 417B

KCF BENNETT STRATEGY Z303 ET
TH 512X 145Y DOMINETTE 57B
DR WORLD CLASS 517 10H
FTF TRENA 366N

SHF YORK 19H Y02
HUTH T013 DOMINETTE Z016
TH 223 711 VICTOR 755T
FTF CLASSY LADY 134Y

CED	BW	WW	YW	SC	SCF	Milk	M&G	Uddr	Teat	REA	Marb
5.4	1.4	60	96	1.3	17.0	17	46	1.50	1.40	0.63	0.18

5220N is a big bodied yet very feminine 1707 daughter. She stems from the 134 cow which is also the grandam of our Lot 1 bull.

FTF TONYA 982G {DLF, HYF, IEF, MSUDF, DBF}
P44001694 02/09/2019
Dam of Lot 80



lot 81 **FTF GOOD TIME GAL 5112N**
{DLF,HYF,IEF,MSUDF,MDF,DBF} P44646270 03/24/2025

GERBER HIGH TIME
FTF HIGH TIME 2703K
FTF CLASSY LADY 7615E ET

SHF HOUSTON D287 H086
FTF WHITNEY 3202L
FTF FABULOUS LEA 3407A

GERBER CANAAN 041C
GERBER Z426 DIXIE E066
DR WORLD CLASS 517 10H
FTF TRENA 366N

SHF DAYBREAK Y02 D287 ET
SHF MISS 14 20Z D223
FTF M326 FABRICATOR 838U
FTF LEANNA 648S

CED	BW	WW	YW	SC	SCF	Milk	M&G	Uddr	Teat	REA	Marb
7.9	0.4	67	101	1.5	20.3	32	66	1.20	1.10	0.73	0.11

5112N is a late March heifer but a really good one. She offers excellent EPDS and a very modern pedigree combining Gerber High Time and Houston.

lot 82 **FTF GOOD TIME GAL 5113N**
{DLF,HYF,IEF,MSUDF,MDF,DBF} P44646271 03/25/2025

GERBER HIGH TIME H65
FTF HIGH TIME 2703K
FTF CLASSY LADY 7615E ET

APH 4356 COLORADO 15G
FTF FAIR LADY 3225L
FTF MS PROSPECTOR 520C

GERBER CANAAN 041C
GERBER Z426 DIXIE E066
DR WORLD CLASS 517 10H
FTF TRENA 366N

R EXCITEMENT 4356
CPH 10Y WYNNE 14B
FTF PRIME PRODUCT 226Z
FTF MS REVOLUTION 2312Z

CED	BW	WW	YW	SC	SCF	Milk	M&G	Uddr	Teat	REA	Marb
5.7	0.4	60	97	1.4	20.2	30	60	1.20	1.10	0.23	0.36

5113N is a quality March heifer with excellent EPD's and pedigree.

lot 83 **FTF GOOD TIME GAL 595N**
{DLF,HYF,IEF,MSUDF,MDF,DBF} P44646372 02/07/2025

GERBER HIGH TIME H65
FTF HIGH TIME 2703K
FTF CLASSY LADY 7615E ET

FTF RELEVANT 831F
FTF RILEY 371L
FTF TRULY YOURS 148J

GERBER CANAAN 041C
GERBER Z426 DIXIE E066
DR WORLD CLASS 517 10H
FTF TRENA 366N

EFBEEF TFL U208 TESTED X651 ET
FTF MS REVOLUTION 626D
FTF TRAILBLAZER 980G
FTF PROMISE 9416G

CED	BW	WW	YW	SC	SCF	Milk	M&G	Uddr	Teat	REA	Marb
14.3	-2.5	56	78	0.9	26.3	32	60	1.40	1.40	0.27	0.20

595N is a dark red and attractive female with a 14 calving ease EPD and very high teat and udder EPD's.

lot 84 **FTF GOOD TIME GAL 5111N**
{DLF,HYF,IEF,MSUDF,MDF,DBF} P44646269 03/21/2025

GERBER HIGH TIME H65
FTF HIGH TIME 2703K
FTF CLASSY LADY 7615E ET

SHF HOUSTON D287 H086
FTF WHITNEY 323L
FTF MS FRONTIER 921G

GERBER CANAAN 041C
GERBER Z426 DIXIE E066
DR WORLD CLASS 517 10H
FTF TRENA 366N

SHF DAYBREAK Y02 D287 ET
SHF MISS 14 20Z D223
TH FRONTIER 174E
FTF MS PROSPECTOR 557C

CED	BW	WW	YW	SC	SCF	Milk	M&G	Uddr	Teat	REA	Marb
5.4	1.5	74	115	1.9	16.1	34	71	1.10	1.10	0.72	0.14

5111N is a top end March female with excellent EPD's an a very proven, modern pedigree.

SPRING HEIFERS

lot 85

FTF POLLY 590N

{DLF,HYF,IEF,MSUDF,MDF,DBF} P44646367 02/04/2025

GERBER HIGH TIME H65
PF HIGH RISE 2301
FTF CLASSY LADY 7623E ET

H B DISTINCT
FTF DESTINY 217K
FTF TONYA 9201G

GERBER CANAAN 041C
GERBER Z426 DIXIE E066
DR WORLD CLASS 517 10H
FTF TRENA 366N

NJW 160B 028X HISTORIC 81E ET
H DS MISS SPICE 8082
HUTH FTF TORQUE C002
FTF MISS RIB EYE 107Y



CED	BW	WW	YW	SC	SCF	Milk	M&G	Uddr	Teat	REA	Marb
4.6	0.0	70	105	1.7	23.2	26	61	1.40	1.40	0.58	0.20

lot 86

FTF GOOD TIME GAL 593N

{DLF,HYF,IEF,MSUDF,MDF,DBF} P44646370 02/07/2025

GERBER HIGH TIME H65
FTF HIGH TIME 2703K
FTF CLASSY LADY 7615E ET

H B DISTINCT
FTF DESTINY 302L
FTF MS FRONTIER 130J

GERBER CANAAN 041C
GERBER Z426 DIXIE E066
DR WORLD CLASS 517 10H
FTF TRENA 366N

NJW 160B 028X HISTORIC 81E ET
H DS MISS SPICE 8082
TH FRONTIER 174E
FTF TONYA 984G



CED	BW	WW	YW	SC	SCF	Milk	M&G	Uddr	Teat	REA	Marb
15.4	-2.2	63	93	1.1	25.3	35	67	1.50	1.40	0.39	0.11

590N is dark red and attractive who has solid EPD's and pedigree.

Big time number spread on this female. Her dam just had her second calf and is a model cow.

PROGRESSIVE CATTLEMEN

RELY ON VitaFerm®
Concept•Aid®



For more information, contact **BioZyme® Dealer John Ridder**
at (636) 358-4161 or visit www.vitaferm.com to find a dealer near you.



LEARN MORE

VITAFERM

PERFORMANCE THAT PAYS







Grand champion Hereford heifer, open, shown by Madi and Ben Ridder of Marthasville.



Proudly Celebrating

1976

50 YEARS

2026

in the Registered Hereford business



Missouri Hereford Tour 2018

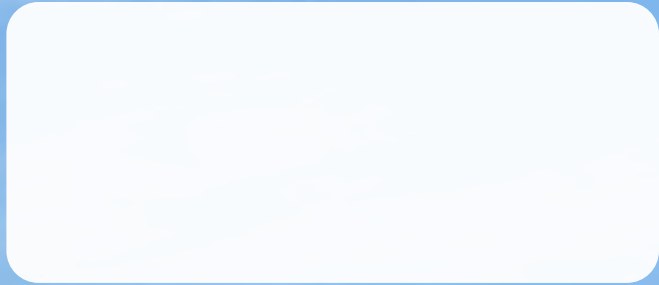


Missouri Polled Hereford Assn. Tour 1997





Falling Timber Farm
16789 Ridder Road
Marthasville, MO 63357



**Striving to produce consistent, quality cattle
for future generations.**

www.fallingtimberfarm.com